



University and TAFE
Courses 2024

Federation

Federation University Australia acknowledges the Traditional Custodians of the lands and waters where our campuses, centres and field stations are located and we pay our respects to Elders past and present. We extend this respect to all Aboriginal and Torres Strait Islander and First Nations Peoples.

The Aboriginal Traditional Custodians of the lands and waters where our campuses, centres and field stations are located include:

Wimmera	Wotjobaluk, Jaadwa, Jadawadjali, Wergaia, Jupagulk
Ballarat	Wadawurrung
Berwick	Boon Wurrung
Gippsland	Gunai Kurnai
Nanya Station	Mutthi Mutthi and Barkindji

Institutes and Schools

Institute of Education, Arts and Community

Institute of Health and Wellbeing

Institute of Innovation, Science and Sustainability

Federation TAFE

Global Professional School

Graduate Research School

Federation University Online

Further information:

[federation.edu.au/institutes-and-schools](https://www.federation.edu.au/institutes-and-schools)

Federation University	03
Top reasons to study at Fed	04
Our campus locations	06
Our Support Services and Programs	08
Scholarships and Grants	09
Fedliving	10
Your life at Fed	11
Where do you start?	12
Study to suit your lifestyle	12
Co-op University	13
Course Summary 2024	14
Pathway Courses	20
TAFE	24
Allied Health	26
Automotive	28
Building and Construction	29
Business	32
Education and Early Childhood	36
Engineering	40

Food and Hospitality	44
Hair and Beauty	45
Information Technology	46
Nursing, Midwifery and Paramedicine	50
Performing Arts, Visual Arts	54
Psychology	56
Rural Sciences	58
Science	60
Social Work, Community Work, Criminology, Arts and Social Sciences	64
Sport, Health, Physical and Outdoor Education	68
Higher Degrees by Research	72
What will it cost me?	74
Higher education applications explained	75
How do I apply? (Higher Education and TAFE)	76
My next steps	77
There's more than one way	78
Top 10 perks of being a Federation University student	79



Established in 1870, Federation is one of Australia's oldest and most experienced universities offering a range of TAFE and higher education study options. We're known for our modern approach to teaching, learning and innovation as well as our industry connections. Our purpose is to transform lives and enhance our communities.

Federation's new Co-operative Education Model combines campus-based learning with accredited workplace learning to ensure every graduate is equipped with work experience and the practical skills to succeed.

Be part of our diverse community

Today, we are proud to have more than 18,500 domestic and international students and 123,000 alumni across Australia and the world. We welcome people from all backgrounds and cultures into our supportive, inclusive and thriving community.

Scan for more information



Federation.edu.au

1800 333 864 (1800 FED UNI)

#feduni       /feduniaustralia

Top reasons to study at Fed

#1 in Australia for FIRST GENERATION STUDENT ENROLMENTS ¹

#1 in Victoria for SOCIAL EQUITY ¹

#1 in Victoria for STARTING SALARY
(Median Graduate Income One Year) ²

#1 in Victoria for LEARNER ENGAGEMENT ³

1 The Good Universities Guide 2022, undergraduate and postgraduate level

2 The Good Universities Guide 2022, undergraduate level

3 The Good universities Guide 2022, postgraduate level

EXCELLENCE IN RESEARCH AUSTRALIA, 2018 NATIONAL REPORT

RATING 5/5 EXCELLENCE IN RESEARCH

Well above the world standard in: Applied Mathematics, Environmental Science and Management, Civil Engineering, Clinical Sciences, Human Movement and Sports Science, and Nursing.

Top 250 Young Universities worldwide.*

TIMES HIGHER EDUCATION WORLD UNIVERSITY RANKINGS BY SUBJECT 2023

301-400 for CLINICAL, PRE-CLINICAL & HEALTH,
ENGINEERING & TECHNOLOGY

401-500 for COMPUTER SCIENCE, PSYCHOLOGY

501-600 for EDUCATION, LIFE SCIENCES, SOCIAL SCIENCES

601-800 for PHYSICAL SCIENCES

601+ for BUSINESS AND ECONOMICS

101-200 TIMES HIGHER EDUCATION IMPACT RANKINGS 2022

86 REDUCING INEQUALITIES (SDG10)

87 SUSTAINABLE CITIES AND COMMUNITIES (SDG11)

99 GENDER EQUALITY (SDG5)

101-200 QUALITY EDUCATION (SDG4); PEACE, JUSTICE AND
STRONG INSTITUTIONS (SDG16); LIFE ON LAND (SDG15); DECENT
WORK AND ECONOMIC GROWTH (SDG8); AFFORDABLE AND
CLEAN ENERGY (SDG7)

201-300 GOOD HEALTH AND WELL-BEING (SDG3);
NO POVERTY (SDG1)

301-400 PARTNERSHIPS FOR THE GOALS (SDG17)

* Times Higher Education World University Rankings.

Federation TAFE IS ABOVE THE VICTORIAN TAFE AVERAGE FOR:

STUDENT SATISFACTION*

EMPLOYMENT OUTCOMES*

EMPLOYER SATISFACTION*

*Department of Education and Training RTO Performance Report, 2022.

Pathways galore

Federation is uniquely positioned as a dual-sector university to provide pathways from vocational education and skills training at Federation TAFE, through to our higher education programs.

With such a generous choice, you'll have the ability to explore your passions and shape who you are to influence your future.



Our research changes lives

Our research is ranked well above world standard, with the university achieving the highest possible five-out-of-five rating in seven research areas by Excellence in Research Australia (ERA). We're driven by the innovative research we do, and the brilliant minds that power it.

We collaborate with communities and industries across Australia and overseas and our work has measurable impact on our wider society.



State-of-the-art facilities

When it comes to your tuition, our state-of-the-art facilities provide everything you need to get ahead. You will have access to an array of essential and contemporary teaching and learning technologies.

Small class sizes

Our class sizes are small, meaning you can receive one-to-one assistance directly from your lecturers and tutors.

You are part of something bigger

This begins the moment you arrive. From our clubs, societies and sports teams, to our recreational trips and activities, you'll have every opportunity to get involved in Federation life – to meet new people, get inspired and build lifelong connections.

Support that never stops

Even after you graduate, you're still part of our community. With strong relationships with industry partners, your qualification will provide opportunities that are set to grow.



Diversity

We are committed to providing equal opportunity and freedom from discrimination and harassment for all members of the Federation community, and to creating an environment that reflects our values; the social and cultural diversity within the communities we serve.



Our campus locations

Being at Federation is about feeling comfortable with where you're studying, not just what you're studying. With multiple campuses stretching across Victoria, from the Wimmera and Ballarat to Berwick and Gippsland, you're sure to find a campus that's right for you.

Find out more at [federation.edu.au](https://www.federation.edu.au)





Mt Helen Campus (Ballarat)

Our flagship Ballarat campus is home to both Federation TAFE and higher education courses. Set on 110 hectares of natural bushland, Mt Helen combines a beautiful location with cutting-edge teaching and research facilities – and is just minutes from the centre of Ballarat.

SMB Campus (Ballarat)

In the heart of Ballarat, our SMB campus is recognised for its historic 19th century buildings. But today it's home to Federation TAFE, including our Building and Construction Training Centre, Manufacturing Engineering Skills Centre, Federation College, Prospects Training Restaurant, Bakery Centre and Unistyle Hair and Beauty Salon.

Camp Street Campus (Ballarat)

Located right in the centre of Ballarat, Camp Street is known for its highly-regarded Arts Academy – running visual and performing arts courses. With a mix of specialised theatres and galleries, the campus provides the kind of environment needed to hone your creativity, experiment and showcase your work.

Rural Sciences Skills Centre (Ballarat)

Spread over two locations, the Rural Skills Centre is recognised for its excellent TAFE training facilities. At Gillies Street, TAFE students make use of the wetlands and gardens of Ballarat's Lake Wendouree and Botanical Gardens precinct, while Mt Rowan has purpose-built agricultural facilities for TAFE farming students.

Berwick Campus

Our Berwick campus is located around 40km south-east of the Melbourne CBD in the Berwick Health and Education Precinct. The campus is easily accessible with onsite parking available and the Berwick Railway Station located only 500 metres away. Equipped with state-of-the-art facilities including science, nursing and IT labs and a variety of student-centred study spaces, the Berwick campus offers students a welcoming and supportive learning environment.

Gippsland Campus (Churchill)

Our Gippsland campus combines the best of what campus life is all about – a welcoming community, innovative learning environment and excellent research facilities. Situated on 60 hectares of landscaped grounds and adjacent to the town of Churchill, it's less than two hours from Melbourne.

Wimmera Campus (Horsham)

With its TAFE study options, Wimmera appeals to all kinds of students, from differing backgrounds. The campus features a hairdressing salon, a nursing training centre, early childhood education and community services options, as well as specialised engineering, plumbing, electrical, automotive, building and construction workshops, media production studio, library and computer study labs, large auditorium, research hub and student support services including Aboriginal Student Success Officer.

Online study

We have a range of fully supported online courses – so you can get ahead in your studies, without falling behind in other areas of your life.

Built for success

Wherever you walk around our campuses, you'll find plenty of natural green spaces and nooks to meet up with people, study, or just take time out.

Our Support Services and Programs

Being a tertiary student is certainly exciting, but it's not without its challenges. With our range of student-focused academic pathways and support programs, support is always on hand.

Aboriginal Education Centre

A support hub for Aboriginal and Torres Strait Islander students. [federation.edu.au/aec](https://www.federation.edu.au/aec)

Libraries

Welcoming spaces for groups and quiet study, our virtual library gives access to print books, ebooks, journal titles and streamed videos. [federation.edu.au/library](https://www.federation.edu.au/library)

Counselling

All students are welcome at our free and confidential counselling service. [federation.edu.au/counselling](https://www.federation.edu.au/counselling)

Chaplaincy

Chat with a chaplain for spiritual and pastoral care support, or any practical matters to do with university life. [federation.edu.au/chaplaincy](https://www.federation.edu.au/chaplaincy)

Support for students with disabilities

We want everyone to have full access to all our programs and facilities. If you need any help, just get in touch with our Disability and Learning Access Unit. [federation.edu.au/disability](https://www.federation.edu.au/disability)

Student careers and employment

The Careers and Employability team offer a range of events, programs and services for Federation university students, enabling you to find work while you study, gain valuable work experience, plan for your future career and enhance your employment prospects. [federation.edu.au/studentcareers](https://www.federation.edu.au/studentcareers)

Student Advocacy

We give you clear, independent advice and support to navigate university processes if things go wrong. We can help with appeals of all types, misconduct charges, complaints and academic progress concerns, and attend meetings and hearings with you to reduce power imbalances. [federation.edu.au/studentadvocate](https://www.federation.edu.au/studentadvocate)

Elite Athlete Program

Our service lets you make flexible study arrangements so you can excel in both higher education and your sporting and performance goals. [federation.edu.au/elite-athlete](https://www.federation.edu.au/elite-athlete)

International Student Advisory

A hub for international students. We provide personal welfare support, run social activities, excursions and cultural celebrations, as well as English language practice activities. [federation.edu.au/international/international-student-advisory](https://www.federation.edu.au/international/international-student-advisory)

Textbooks and study resources

Find the book you're after at The School Locker. [federation.edu.au/bookshop](https://www.federation.edu.au/bookshop)

Children's centres

Federation Children's Centres at Mt Helen, SMB and Churchill offer a caring and supportive environment with flexible and stimulating learning experiences. Childcare and kindergarten programs are available for children up to 5 years. An environment for children to learn, explore and play.

A number of external childcare centres are located within a short distance of the Berwick and Wimmera campuses.

[federation.edu.au/childrens-centres](https://www.federation.edu.au/childrens-centres)

Learning and Academic and Skills Success

Our Learning, Academic and Skills Success programs (LASS) provide support for each stage of your undergraduate university experience.

- **FedReady** gives you the skills you need to succeed by showing you how to tackle your first assessments.
- **PASS** is a peer study program for students in challenging courses, led by an experienced senior student.
- **ASK** is a group of experienced senior students ready to answer your questions.
- **Online assessment task** feedback through Studiosity.
- **Learning Skills Advisors** support students to develop their academic writing and study skills.
- **Study Skills** website offers a range of free online resources.

[federation.edu.au/lass](https://www.federation.edu.au/lass)

TAFE Support and Information

See our VET Information Guide (TAFE Handbook) [federation.edu.au/current-students/essential-info/publications/handbook](https://www.federation.edu.au/current-students/essential-info/publications/handbook)

Peer Mentor Program

Each commencing undergraduate student during Semester 1 is grouped with fellow students and a Peer Mentor to help them transition to higher education and create social connections.

Student HQ

Student HQ provides support to future and current students, in person, online or over the phone. Visit the Library Infopoint (Ballarat, Berwick, Churchill and Wimmera campuses) to gain the assistance you need relating to your studies.

Phone **1800 FED UNI**

Monday to Friday 9am – 5pm

Access: [fred.federation.edu.au/futurestudyEnquiry/ask.federation.edu.au](https://www.fred.federation.edu.au/futurestudyEnquiry/ask.federation.edu.au)

Scholarships and Grants

We offer a range of scholarships and grants to reward academic achievement, help students in financial difficulty and assist with some of the extra costs of studying. Students at all campuses and study levels are able to apply – to check out the full range of support we offer, head to [federation.edu.au/scholarships](https://www.federation.edu.au/scholarships)



If you are a recent Year 12 graduate with an ATAR of 85 or above and list Federation in your preferences (when applying for our undergraduate degree programs); you are automatically eligible to be considered for our FedExcellence Scholarship.

All you need to do is submit an expression of interest, accept your offer and enrol.



Fedliving

Make campus your home

Living on-campus you'll get to meet new people from a range of backgrounds, cultures and courses in a community as thriving as it is inclusive.

We offer a range of accommodation options located on or close to our campuses in Ballarat, Gippsland and Berwick with our dedicated team providing support and making your success and happiness a priority.

[federation.edu.au/fedliving](https://www.federation.edu.au/fedliving)

Living with us includes a range of amazing opportunities, new friends and lifelong memories. It also represents great value, which comes as a relief when you're trying to balance life and study. All bills are included in the weekly rent - including utilities and internet, so there are no hidden costs.

A range of short term accommodation is also available on-campus, providing the ideal option for students with placements or block mode classes.

Benefits of living on campus

Success

Federation University research shows students who live with us are more likely to succeed.

Friendship

Develop instant networks and lifelong friendships with a sense of community.

Opportunity

Amazing opportunities, planned experiences, activities and so much fun.

Support

24/7 support so you can enjoy a balanced living and learning community.

Convenience

For peace of mind and convenience, residences are located on, or close to campus.



Your life at Fed

For most of us, tertiary study is about getting to that next level professionally and academically. But it's also about meeting new people, building connections and making memories. Here's how you can make the most of our vibrant student community.

[federation.edu.au/starting-fed](https://www.federation.edu.au/starting-fed)

Student groups

Whether you're creative, spiritual, sporty or something else entirely, there's a student group for you OR the ability and support to start your own club. Hosting a variety of events and activities throughout the year, student groups are a fantastic way of getting involved in uni life.

[federation.edu.au/clubs](https://www.federation.edu.au/clubs)

Student representation

The Student Senate works hard across all campuses to make sure your voice is heard. Elections are held annually for interested students to join.

[federation.edu.au/studentsenate](https://www.federation.edu.au/studentsenate)

Federation Alumni

When you graduate from Federation, you're still part of the family. Through our alumni community, you can connect with people from all over the world, share common experiences and discover new opportunities.

[federation.edu.au/alumni](https://www.federation.edu.au/alumni)

Sport and Exercise

We have a range of sport and fitness programs to suit everyone's needs, from physical activity to participation and competitive sport, with facilities on campus and virtual options as well.

[federation.edu.au/sport](https://www.federation.edu.au/sport)

Mt Helen Campus – Our state of the art Health and Sports Precinct was opened in 2020. It features a community Health & Fitness Centre, heated indoor 25 metre pool, indoor sports stadiums, active studio, tennis courts and sporting ovals.

Gippsland campus – On campus is a multi-use synthetic field along with outdoor tennis and basketballs courts. Adjacent to the campus is Latrobe Leisure Churchill, providing a fully equipped gym, heated indoor 25 metre pool, squash courts and multi-use courts.

Berwick Campus – A multi-use outdoor court which can accommodate tennis, basketball, soccer and netball along with cricket nets can be found on campus. A number of local gyms and leisure centres are found nearby.

University Study Abroad and Exchange

When you study abroad, you have the opportunity to make friends with people from diverse cultures and countries, taste unique foods and learn things differently.

With official exchange programs offered in a range of academic areas, we encourage you to become immersed in a totally different environment. Choose from a few weeks on a study tour to one or two semesters in duration.

This enriching experience will enable you to develop your leadership skills, cultural awareness and self-confidence while making new friends and gaining credit towards your degree. The bonus is you don't graduate any later and you have an international experience!

[federation.edu.au/studyabroad](https://www.federation.edu.au/studyabroad)

Where do you start?

Making the right choice

No matter what stage you're at in life, you'll have many questions about tertiary study. We're here to help you make an informed choice that's right for you.

Don't know what to study?

Think about the following questions then discuss your options with us over the phone: **1800 333 864**

- What are my interests?
- What do I enjoy?
- What are my values?
- What are my skills and strengths?
- What kind of career attracts me?
- What qualifications will I need to work in those areas?

Once you have a better idea of your options, you can find out more at study.federation.edu.au

View our publications at federation.edu.au/publications

Already know what to study?

Here's what you can do next:

- Visit us on campus – book a tour by calling us on **1800 333 864** or visit federation.edu.au

- Come to an information session – head to federation.edu.au/events
- Hear from those who know best (our students) youtube.com/FedUniAustralia

Information for international students

No matter where you're coming from, you'll have the support you need to thrive at Federation. federation.edu.au/multicultural-support

Deciding to apply

Once you've decided on what you want to study, your next step is to apply. Jump to the "My Next Steps" on page 77 to find out your application method and next steps.

Keep in mind you can apply for more than one course. If you don't get into your chosen course we can assist with alternative pathways or suggest different options.

If you need help at any point, call us on **1800 333 864** or access fred.federation.edu.au/futurestudyEnquiry

Study to suit your lifestyle

Different people. Different modes.

Our flexible study options mean you can study the way you like.

And as your life changes, so can your study mode.

On campus

For the full experience, study with us on campus.

Off campus / online

Study anywhere you like – your home, local library or even your small business – providing the perfect option if you have a lot to juggle. If you have the motivation, we have the support, so you can study when and where you choose.

Flexible delivery

It's a blend of online study with regular, scheduled on-campus classes. You might attend evening classes once a week, a few weekend classes, a one week block, or something similar depending on the unit.

Time commitment: full-time versus part-time study

Degree students should look at committing approximately 10 hours per unit per week to studies, which includes your own study time working on assignments and collaborating with your classmates.

Full-time degree students will typically take 4 units per semester.

Part-time degree students will typically take 2 units, meaning it will take longer to complete your degree, but sometimes this is all that fits into busy lives!

Find the right balance between your studies, work, family and any other commitments. Whatever the study mode and whatever your time commitment, the course is the same – so choose what works best for you.



Co-op University

Federation has embarked on a journey to become the first Australian university to embed the globally recognised co-operative education model in all our programs. This unique model will link students to workplaces and industry as a core part of their studies, and take learning from our campuses to the world of work.

Our first co-op degrees were launched in 2023 and include the **Bachelor of Information Technology**, **Bachelor of Information Technology (Professional Practice)**, **Bachelor of Visual Arts**, **Bachelor of Business** and **Master of Applied Cyber Security**.

federation.edu.au/coop

Co-operative Experiential Learning

Across all programs and courses at Federation, Co-operative Experiential Learning (CEL) may be real or simulated and can occur in the workplace, at the University, online or face-to-face. Other opportunities include voluntary placements, industry-based projects, simulated work experiences and programs where students may undertake a placement for up to 12 months with a host organisation in the same field as their studies.

A placement is a smart way to boost your employability and meet the kind of people you'll be working with in the field. With our strong connections, we partner you with leading businesses and organisations.

Various scholarships are available to assist students on placements.

federation.edu.au/scholarships



"The Bachelor of Information Technology (Professional Practice), coupled with industry experience at IBM and Kyndryl, is a great way to gain workplace knowledge at leading companies. With the freedom to tailor-make your degree with an extensive choice of elective courses to best suit your employment, you dictate the path to your potential future career. The included internship at a leading IT company provides a great benefit to your career as it prepares you for real-world involvement by working alongside real clients with real problems. It is a challenging, engaging, and rewarding experience that you will not regret."

Joshua Kirk
Bachelor of Information Technology
(Professional Practice)



Course Summary 2024

STUDY TYPE		LOCATION	DURATION (YEARS)	GUARANTEED ATAR (EOP available)	PAGE
PATHWAY COURSES					
PC	Advance to University	FLEX Ballarat, FLEX Berwick, FLEX Gippsland	1 PT	N/A	20
PC	International Baccalaureate Career-related Program – International Sport Management	Online	1.5	N/A	20
S	VCE Vocational Major	Ballarat	2	N/A	20
S	Certificate II in General Education for Adults	Ballarat	20W	N/A	20
PC	Federation Access Studies (FAST)	Ballarat, Berwick, Gippsland, Online	0.5	N/A	21
ALLIED HEALTH					
U	Bachelor of Occupational Therapy (Honours)	Gippsland	4	70	26
U	Bachelor of Physiotherapy	Gippsland	4	90	26
U	Bachelor of Speech Pathology (Honours)	Ballarat, FLEX Ballarat, Berwick, Gippsland, FLEX Gippsland	4	85	26
P	Graduate Certificate in Health (Workplace Health and Safety)	Ballarat, Online	0.5	N/A	26
P	Graduate Diploma of Health (Workplace Health and Safety)	Ballarat	1	N/A	26
P	Graduate Diploma of Public Health – incorporating Graduate Certificate	Ballarat, Berwick, Gippsland, Online	1	N/A	27
P	Master of Health (Health Services Management)	Online	2	N/A	27
P	Master of Health (Workplace Health and Safety)	Ballarat, Online	2	N/A	27
P	Master of Public Health – incorporating Graduate Diploma/Graduate Certificate	Ballarat, Berwick, Online	2	N/A	27
P	Master of Speech Pathology	FLEX Ballarat, FLEX Gippsland	2	N/A	27
AUTOMOTIVE					
PA	Certificate II in Automotive Vocational Preparation	Ballarat	20W	N/A	28
A	Certificate III in Light Vehicle Mechanical Technology	Ballarat	4	N/A	28
BUILDING AND CONSTRUCTION					
PA	Certificate II in Building and Construction Pre-apprenticeship	Ballarat	14W	N/A	29
PA	Certificate II in Electrotechnology (Career Start)	Ballarat	16 - 23W	N/A	29
PA	Certificate II in Furniture Making	Ballarat	10W	N/A	29
PA	Certificate II in Plumbing (Pre-apprenticeship)	Ballarat	26W	N/A	29
A	Certificate III in Bricklaying and Blocklaying	Ballarat	3	N/A	29
A	Certificate III in Cabinet Making	Ballarat	4	N/A	30
A	Certificate III in Carpentry	Ballarat	4	N/A	30
A	Certificate III in Electrotechnology Electrician	Ballarat	4	N/A	30
A	Certificate III in Painting and Decorating	Ballarat	4	N/A	30
A	Certificate III in Plumbing	Ballarat	4	N/A	30
S	Certificate IV in Building and Construction (Building)	Ballarat	1	N/A	31
S	Diploma of Building and Construction (Building)	FLEX Ballarat	1	N/A	31
S	Advanced Diploma of Building Design (Architectural)	FLEX Ballarat	2.5	N/A	31
S	Advanced Diploma of Building Surveying	Ballarat	2	N/A	31

STUDY LEVEL

S Study may include full-time, part-time, on-campus, flexible delivery, workshops, block mode and blended delivery.	T Traineeship
A Apprenticeship	SC Short Course
PA Pre-apprenticeship	PC Pathway Course
	U Undergraduate bachelor degree
	P Postgraduate studies

DISCLAIMERS

- * Proposed course only. Subject to Federation's course accreditation processes.
- + Proposed location only.

LOCATION

- FLEX** Flexible delivery is a blend of online study with regular, scheduled on-campus classes.
- FOL** This course is available through Federation Online - online.federation.edu.au
- BLD** Blended delivery is a combination of online and on campus classes.

DURATION

- PT** Part-time study
- M** Months
- W** Weeks

GUARANTEED ATAR

- See definition on page 75
- N/A** Not applicable

STUDY TYPE

LOCATION

DURATION
(YEARS)

GUARANTEED ATAR
(EOP available)

PAGE

BUSINESS

TAFE



T	Certificate III in Business - Traineeship	Ballarat	1	N/A	32
S	Certificate IV in Accounting and Bookkeeping	Ballarat	1	N/A	32
S	Diploma of Business	Ballarat	1	N/A	32
U	Diploma of Business (Higher Education)	Ballarat, Berwick	1	N/A	32
U	Bachelor of Business	Ballarat, Berwick, Gippsland, Online	3	50	34
U	Bachelor of Business (Honours)	Ballarat, Berwick, Gippsland, Online	1	N/A	34
U	Bachelor of Professional Accounting	Ballarat, Berwick, Gippsland, Online	3	50	34
P	Master of Business Administration	Ballarat	2	N/A	34

EDUCATION AND EARLY CHILDHOOD

TAFE



S	Certificate III in Early Childhood Education and Care	Ballarat, Wimmera	1	N/A	36
S	Certificate III in School Based Education Support	Ballarat	1	N/A	36
S	Certificate IV in School Based Education Support	Ballarat	11M	N/A	36
S	Certificate IV in Training and Assessment	Ballarat	37W PT	N/A	36
S	Diploma of Early Childhood Education and Care	Ballarat, Wimmera	2	N/A	36
U	Associate Degree of Vocational Education and Training	Online	Up to 2	N/A	37
U	Bachelor of Education (Early Childhood Education)	Ballarat, Berwick, ^{CHISHOLM} Frankston, Gippsland, ^{FOL} Federation Online	3	55	37
U	Bachelor of Education (Early Childhood and Primary)	Ballarat, Berwick, Gippsland, Online	4	70	37
U	Bachelor of Education (Primary)	Ballarat, Berwick, Gippsland	4	70	38
U	Bachelor of Education Studies	Ballarat, Berwick, Gippsland	3	50	38
U	Bachelor of Outdoor and Environmental Education	Ballarat, Gippsland	3	50	69
U	Bachelor of Secondary Education	Ballarat, Berwick, Gippsland	4	70	38
U	Bachelor of Secondary Education (Applied Teaching)	Ballarat, Berwick, Gippsland, Online	4	70	38
U	Bachelor of Secondary Education (Health and Physical Education Teaching)	Ballarat, Berwick, Gippsland	4	70	70
U	Bachelor of Sport, Physical and Outdoor Education	Ballarat, Gippsland, Berwick	3	50	70
P	Graduate Certificate in Education (Tertiary Education)	Online	0.5	N/A	38
P	Graduate Certificate in Specialist Teaching	Online	1 PT	N/A	38
P	Graduate Diploma in Education Studies – incorporating Graduate Certificate (online)	Ballarat, Online	1	N/A	38
P	Master of Education Studies (Course Work)	Online	2	N/A	39
P	Master of Specialist Teaching	Online	3 PT	N/A	39
P	Master of Teaching (Early Childhood)	Ballarat, Online	2	N/A	39
P	Master of Teaching (Primary)	Ballarat, Online	2	N/A	39
P	Master of Teaching (Secondary)	Ballarat, Online	2	N/A	39

Course Summary 2024

	STUDY TYPE	LOCATION	DURATION (YEARS)	GUARANTEED ATAR (EOP available)	PAGE	
	ENGINEERING					
TAFE	PA	Certificate II in Engineering Studies	Ballarat	16W	N/A	40
	A	Certificate III in Engineering - Fabrication Trade	Ballarat, Wimmera	4	N/A	40
	A	Certificate III in Engineering - Mechanical Trade	Ballarat	4	N/A	40
	A	Certificate III in Engineering - Composite Trades	Ballarat	4	N/A	40
	S	Certificate IV in Engineering Drafting	Ballarat	1	N/A	40
	S	Diploma of Engineering - Technical	Ballarat	1	N/A	40
	U	Diploma of Engineering (Higher Education)	Ballarat, Berwick	1	N/A	41
	U	Bachelor of Engineering (Civil) (Honours)	Ballarat, Berwick, Gippsland	4	60	41
	U	Bachelor of Engineering (Electrical and Information Engineering) (Honours)	Ballarat, Berwick, ^{FLEX} Berwick, Gippsland	4	60	41
	U	Bachelor of Engineering (Mechanical) (Honours)	Ballarat, Berwick	4	60	41
	U	Bachelor of Engineering (Mining) (Honours)	Ballarat, Online	4	60	42
	U	Bachelor of Engineering (Mechatronics and Robotics Engineering) (Honours)	Online	4	60	42
	P	Graduate Certificate in Community Energy and Micro-Grid	Ballarat, Online	1 PT	N/A	42
	P	Graduate Certificate in Maintenance Management	Online	1 PT	N/A	42
	P	Graduate Certificate in Mining Operation Health and Safety	Ballarat, Online	0.5 - 1	N/A	42
	P	Graduate Certificate in Reliability Engineering	Online	1 PT	N/A	42
	P	Graduate Diploma of Engineering Maintenance Management	Online	2 PT	N/A	42
	P	Graduate Diploma of Mining	Ballarat, Online	2	N/A	42
	TAFE	FOOD & HOSPITALITY				
		A	Certificate III in Baking	Ballarat	3	N/A
A		Certificate III in Bread Baking	Ballarat	3	N/A	44
A or S		Certificate III in Commercial Cookery	Ballarat	1.5 or 3	N/A	44
S		Certificate III in Food Processing (Brewing)	Ballarat/Workplace	2	N/A	44
A		Certificate III in Hospitality	Ballarat	1	N/A	44
S		Certificate IV in Artisan Fermented Products (Brewing)	Ballarat	1	N/A	44

STUDY LEVEL

S Study may include full-time, part-time, on-campus, flexible delivery, workshops, block mode and blended delivery.	T Traineeship
A Apprenticeship	SC Short Course
PA Pre-apprenticeship	PC Pathway Course
	U Undergraduate bachelor degree
	P Postgraduate studies

DISCLAIMERS

- * Proposed course only. Subject to Federation's course accreditation processes.
- + Proposed location only.

LOCATION

FLEX Flexible delivery is a blend of online study with regular, scheduled on-campus classes.
FOL This course is available through Federation Online - online.federation.edu.au
BLD Blended delivery is a combination of online and on campus classes.

DURATION

PT Part-time study
M Months
W Weeks

GUARANTEED ATAR

See definition on page 75
N/A Not applicable

	STUDY TYPE	LOCATION	DURATION (YEARS)	GUARANTEED ATAR (EOP available)	PAGE
	HAIR & BEAUTY				
TAFE	P Certificate II in Salon Assistant	Ballarat	5M	N/A	45
	S Certificate III in Beauty Services	Ballarat	9M	N/A	45
	A or S Certificate III in Hairdressing	Ballarat	18M or 3	N/A	45
	S Diploma of Beauty Therapy	Ballarat	1 FT/ 18M PT	N/A	45
	INFORMATION TECHNOLOGY				
TAFE	S Certificate IV in Cyber Security	Ballarat	36W	N/A	46
	S Diploma of Information Technology	Ballarat	1PT	N/A	46
	U Diploma of Information Technology (Higher Education)	Ballarat, Berwick	1	N/A	46
	U Bachelor of Information Technology	Ballarat, Berwick, Gippsland, Online	3	50	47
	U Bachelor of Information Technology (Big Data and Analytics)	Ballarat, Berwick, Online	3	50	47
	U Bachelor of Information Technology (Business Information Systems)	Ballarat, Berwick, Online	3	50	48
	U Bachelor of Information Technology (Networking and Security)	Ballarat, Berwick, Online	3	50	48
	U Bachelor of Information Technology (Software Development)	Ballarat, Berwick, Online	3	50	49
	U Bachelor of Information Technology (Professional Practice)	Ballarat, Berwick	4	N/A	49
	P Master of Cognitive Enterprise – incorporating Graduate Diploma (Ballarat only) and Graduate Certificate	Ballarat, Online	2	N/A	49
	P Master of Applied Cyber Security	Ballarat, Berwick, Online	2	N/A	49
	P Master of Data Science	Ballarat, Online	2	N/A	49
	P Master of Technology (Enterprise Systems and Business Analytics)	Ballarat, Online	2	N/A	49
	P Master of Technology (Software Engineering)	Ballarat, Online	2	N/A	49
		NURSING, MIDWIFERY AND PARAMEDICINE			
TAFE	T or S Certificate III in Individual Support	Ballarat, Wimmera	0.5 - 1	N/A	50
	T or S Diploma of Nursing	Ballarat, Wimmera	2	N/A	51
	U Bachelor of Nursing	Ballarat, ^{BLD} Ballarat, Berwick, ^{BLD} Berwick, Gippsland, ^{BLD} Gippsland, ^{BLD} East Gippsland, ^{BLD} (Wonthaggi)	3	70	51
	U Bachelor of Nursing/Bachelor of Midwifery	^{BLD} Ballarat, ^{BLD} Gippsland	4	75	51
	U Bachelor of Nursing (Honours)	Ballarat, Online	1	N/A	51
	P Graduate Certificate in Health	Online, ^{FOL} Federation Online	1	N/A	51
	P Graduate Certificate in Health (Emergency Nursing)	^{FOL} Federation Online	1 PT	N/A	51
	P Graduate Certificate in Health (Gerontology)	Online	1 PT	N/A	52
	P Graduate Certificate in Health (Intensive Care Nursing)	^{FOL} Federation Online	1 PT	N/A	52
	P Graduate Certificate in Health (Peri-operative Nursing)	^{FOL} Federation Online	1 PT	N/A	52
	P Graduate Diploma of Midwifery	Ballarat, Gippsland	1	N/A	52
	P Graduate Certificate in Paramedicine (Re-entry)	Ballarat, ^{FLEX} Ballarat	0.5	N/A	52
	P Graduate Diploma of Paramedicine	Ballarat	1	N/A	52

(Nursing, Midwifery and Paramedicine is continued on next page).

Course Summary 2024

STUDY TYPE		LOCATION	DURATION (YEARS)	GUARANTEED ATAR (EOP available)	PAGE
NURSING, MIDWIFERY AND PARAMEDICINE <i>(continued)</i>					
P	Master of Health (Advanced Nursing) – incorporating Graduate Certificate/Graduate Diploma	FOL Federation Online	2	N/A	52
P	Master of Health (Child and Family Health) – incorporating Graduate Diploma	FLEX Berwick	2	N/A	52
P	Master of Health (Health Leadership) – incorporating Graduate Diploma/Graduate Certificate	Online	2	N/A	52
P	Master of Health (Mental Health Nursing) – incorporating Graduate Diploma and Graduate Certificate	Online	2	N/A	52
P	Master of Health (Neonatal Care) – incorporating Graduate Diploma and Graduate Certificate	FLEX Ballarat, FLEX Gippsland	2	N/A	53
P	Master of Health (Perinatal and Infant Mental Health) – incorporating Graduate Certificate/Graduate Diploma	FLEX Ballarat	2	N/A	53
P	Master of Health (Research Practice) – incorporating Graduate Diploma/Graduate Certificate	Online	2	N/A	53
P	Master of Nursing (Nurse Practitioner)	Online	1.5	N/A	53
PERFORMING ARTS, VISUAL ARTS					
U	Bachelor of Visual Arts	Ballarat	3	N/A	54
U	Bachelor of Performing Arts	Ballarat	3	N/A	55
U	Bachelor of Arts (Creative Arts) (Honours)	Ballarat	1	N/A	55
PSYCHOLOGY					
U	Bachelor of Psychological Science	Ballarat, Berwick, Gippsland, FOL Federation Online	3	50	56
U	Bachelor of Psychological Science (Honours)	Ballarat, Berwick, Gippsland, Online	1	N/A	56
P	Master of Professional Psychology	Ballarat	1	N/A	57
P	Master of Psychology (Clinical)	Ballarat	2	N/A	57
RURAL SCIENCES					
S	Certificate II in Agriculture	Ballarat	5M	N/A	58
T	Certificate III in Agriculture	Ballarat	Up to 2	N/A	58
T or S	Certificate III in Horticulture	Ballarat	1 or 2 PT	N/A	58
A	Certificate III in Landscape Construction	Ballarat	4	N/A	58
A	Certificate III in Parks and Gardens	Ballarat	3	N/A	58
S	Certificate IV in Agriculture	Ballarat	1	N/A	58

STUDY LEVEL

S Study may include full-time, part-time, on-campus, flexible delivery, workshops, block mode and blended delivery.	T Traineeship
A Apprenticeship	SC Short Course
PA Pre-apprenticeship	PC Pathway Course
	U Undergraduate bachelor degree
	P Postgraduate studies

DISCLAIMERS

- * Proposed course only. Subject to Federation's course accreditation processes.
- + Proposed location only.

LOCATION

FLEX Flexible delivery is a blend of online study with regular, scheduled on-campus classes.
FOL This course is available through Federation Online - online.federation.edu.au
BLD Blended delivery is a combination of online and on campus classes.

DURATION

PT Part-time study
M Months
W Weeks

GUARANTEED ATAR

See definition on page 75
N/A Not applicable

TAFE



TAFE



STUDY TYPE		LOCATION	DURATION (YEARS)	GUARANTEED ATAR (EOP available)	PAGE	
SCIENCE						
TAFE	S or T	Certificate III in Conservation and Ecosystem Management	Ballarat	1 on-campus or 2 T	N/A	60
	S	Diploma of Conservation and Ecosystem Management	Ballarat	1	N/A	60
	U	Bachelor of Biomedical Science	Ballarat, Berwick, Gippsland, Online	3	60	62
	U	Bachelor of Biomedical Science (Gippsland Partnership)	Gippsland	3	N/A	62
	U	Bachelor of Environmental and Conservation Science	Ballarat, Berwick, Gippsland, Online	3	60	62
	U	Bachelor of Food and Nutrition	FOL Federation Online	3	N/A	62
	U	Bachelor of Science	Ballarat, Berwick, Gippsland, Online	3	60	63
	U	Bachelor of Science (Advanced)	Ballarat, Berwick, Gippsland, Online	3	N/A	63
	U	Bachelor of Science (Honours)	Ballarat, Berwick, Gippsland	1	N/A	63
	U	Bachelor of Veterinary and Wildlife Science	Ballarat, Berwick, Gippsland, Online	3	60	63
P	Graduate Certificate in Brewing	Ballarat	2	N/A	63	
SOCIAL WORK, COMMUNITY WORK, CRIMINOLOGY, ARTS AND SOCIAL SCIENCES						
TAFE	S	Certificate IV in Child, Youth and Family Intervention	Ballarat	11M	N/A	64
	S	Certificate IV in Community Services	Ballarat	1	N/A	64
	S	Certificate IV in Disability	Ballarat	1	N/A	64
	S	Certificate IV in Mental Health	Ballarat	1	N/A	64
	S	Diploma of Mental Health	Ballarat	2	N/A	64
	S	Diploma of Community Services	Ballarat, Wimmera	2	N/A	66
	SC	Course in Introduction to the National Disability Insurance Scheme	Ballarat, Wimmera	6W	N/A	66
	U	Bachelor of Arts	Ballarat, Berwick, Gippsland, Online	3	50	66
	U	Bachelor of Arts (Humanities) (Honours)	Ballarat, Gippsland, Online	1	N/A	66
	U	Bachelor of Arts (Social Science) (Honours)	Ballarat, Gippsland, Online	1	N/A	66
U	Bachelor of Social Work	Gippsland, FLEX Gippsland	4	N/A	66	
U	Bachelor of Community and Human Services	Ballarat, FLEX Ballarat, Berwick, FLEX Berwick, Gippsland, FLEX Gippsland	3	50	67	
U	Bachelor of Criminal Justice Management	Ballarat, Berwick, Gippsland, Online	3	50	67	
U	Bachelor of Criminology and Criminal Justice	Ballarat, Berwick, Gippsland, Online	3	50	67	
P	Graduate Certificate in Social and Community Services	Ballarat, Berwick, Online	0.5	N/A	67	
P	Master of Social Work (Qualifying)	Ballarat, Berwick	2	N/A	67	
SPORT, HEALTH, PHYSICAL AND OUTDOOR EDUCATION						
U	Bachelor of Exercise and Sport Science	Ballarat, FLEX Gippsland	3	50	68	
U	Bachelor of Exercise and Sport Science (Honours)	Ballarat	1	N/A	69	
U	Bachelor of Health Sciences (Honours)	Ballarat	1	N/A	69	
U	Bachelor of Outdoor and Environmental Education	Ballarat, Gippsland	3	50	69	
U	Bachelor of Secondary Education (Health and Physical Education Teaching)	Ballarat, Berwick, Gippsland	4	70	70	
U	Bachelor of Sport Management (Honours)	Ballarat	1	N/A	70	
U	Bachelor of Sport, Physical and Outdoor Education	Ballarat, Berwick, Gippsland	3	50	70	
U	International Baccalaureate Career-related Program - International Sport Management	Online	1.5	N/A	71	
P	Master of Clinical Exercise Physiology	Ballarat	1.5	N/A	71	
HIGHER DEGREES						
P	Higher degrees by research				72	

Pathway courses

A different approach to your dream career

We offer foundation, TAFE, undergraduate, postgraduate and research courses. Though we're all about next level education, Federation has a number of pathway programs for people who haven't completed Year 12 or have no work experience.

Advance to University

Ideal for secondary school students aspiring to attain an ATAR of 60 and above. Study first-year university units as part of VCE, selecting from business; humanities, criminology and criminal justice; education; science; nursing, psychology, exercise and sports science; information technology, engineering and mathematics.

LOCATION FLEX Ballarat, FLEX Berwick, FLEX Gippsland	DURATION 1 year part-time
ENTRY REQUIREMENTS Parent/guardian and school principal approval required. Principals certify students meet the guidelines required. See federation.edu.au/advance-to-university	

FLEX Flexible delivery is a blend of online study with regular, scheduled on-campus classes.

International Baccalaureate Career-related Program - International Sport Management (ISM)

This course has been developed by World Academy of Sport (WAOs) and Federation University. The Career-related Studies is made up of three non-award units selected from the first-year Bachelor of International Sport Management. Successful completion of the course provides a direct pathway into the Bachelor of International Sport Management offered by Federation University and includes credits in the first year of the degree. Delivered online, Federation University provides teaching, and schools provide local support and guidance for students through the Career-related Program Coordinators.

LOCATION Online	DURATION 1.5 year	ENTRY REQUIREMENTS Based on International Baccalaureate World School or equivalent.
---------------------------	-----------------------------	---

VCE Vocational Major

The VCE is expanding to include the Vocational Major (replacing VCAL), developing your personal and practical life skills to prepare you for the next stage of your life.

NATIONAL COURSE CODE VCE0000001	LOCATION Ballarat (SMB)	FREE TAFE No	DURATION 2 year
STUDY TYPE Study may include full-time, part-time, on-campus, flexible delivery, workshops, block mode and blended delivery.			
ENTRY REQUIREMENTS Year 11 applicants must have successfully completed year 10 (or equivalent). Language, literacy and numeracy assessment and Pre-training review.			

Certificate II in General Education for Adults

Re-engage with learning and build on your confidence in a friendly, supportive setting, while developing your skills as a lifelong learner. You will become an independent learner in maths, oral and written communication. The completion of this equivalent Year 10 course meets the minimum educational requirement for entry to the Australian Defence Force.

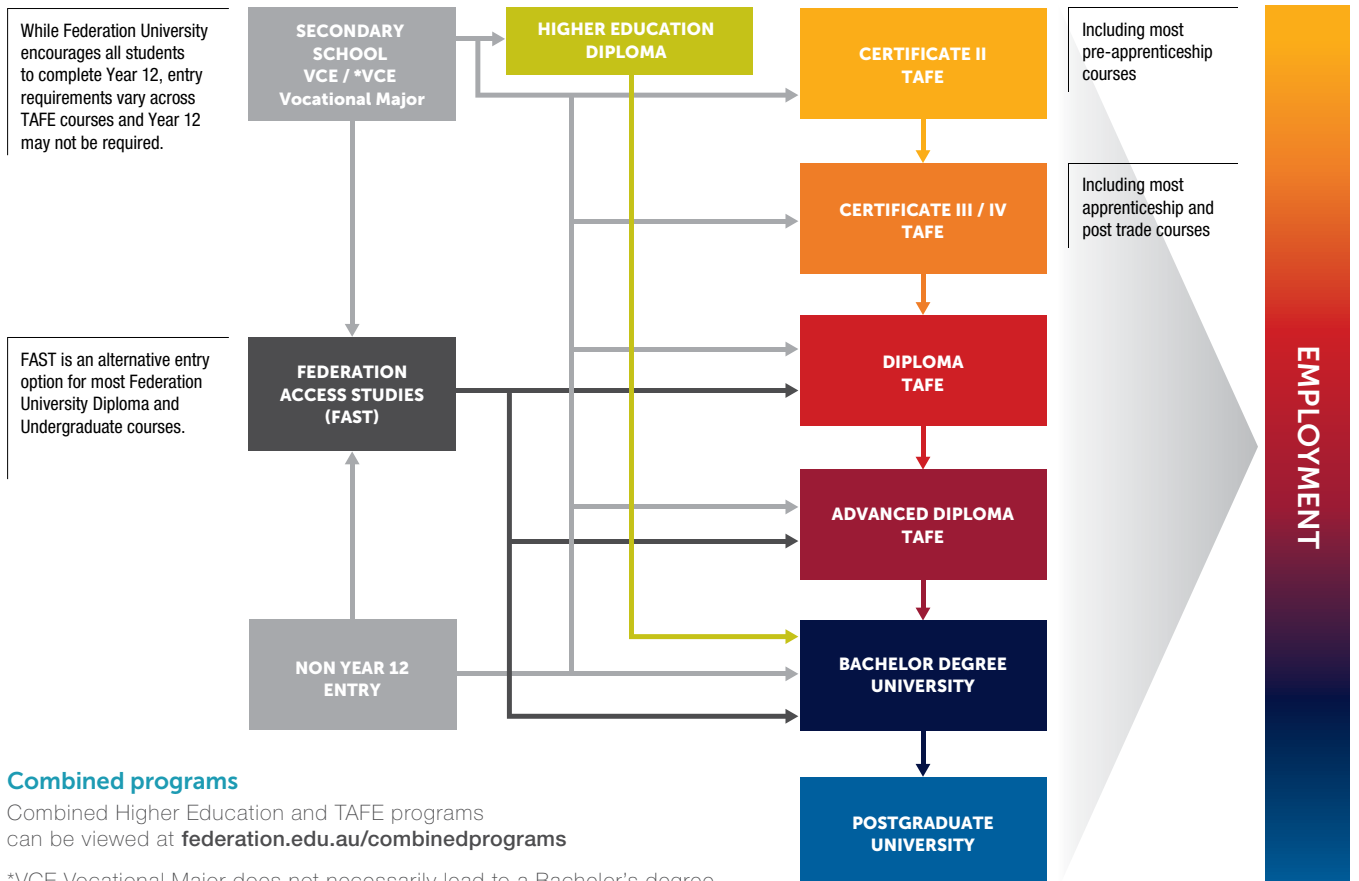
NATIONAL COURSE CODE 22473VIC	FREE TAFE No	LOCATION Ballarat (SMB)	DURATION 20 weeks	CONTACT PER WEEK 17.5 hours
STUDY TYPE Study may include full-time, part-time, on-campus, flexible delivery, workshops, block mode and blended delivery.				
ENTRY REQUIREMENTS Language, literacy and numeracy assessment and Pre-training review.				

Federation Access Studies (FAST)

FAST provides a pathway to a degree if you feel you don't have the study skills, even after Year 12 completion. Learn how to write for academic purposes, research, use university systems and apply these skills to your study in order to undertake a Federation degree. FAST also offers an Introduction to Technical Maths elective course. Successful completion of this course satisfies the entry requirements to apply for an Engineering or Mathematics degree with us. Students requiring additional English Language support may be interested in the FAST (English for Academic Purposes) course. When you successfully complete FAST you are guaranteed a place in one of our undergraduate degrees.

LOCATION	DURATION	ATAR	APPLICATION
Ballarat, Berwick, Gippsland, Online	0.5 year	Required	VTAC / Direct
ENTRY REQUIREMENTS			
Units 3 and 4: A study score of at least 18 in any English. For the Mathematics unit FASTP1013, the prerequisite is Year 10 Mathematics (or equivalent). For the Introduction to Technical Maths unit, the prerequisite is Units 1 and 2: satisfactory completion in two units (any study combination) of Maths: General Mathematics or Maths: Mathematical Methods or Maths: Specialist or Units 3 and 4: any Mathematics. Applicants should turn 18 in the year of commencement OR have completed Yr 12 or equivalent.			
ENTRY REQUIREMENTS (NON-YEAR 12)		ESSENTIAL REQUIREMENTS	
Higher Education, VET and/or Work/Life Experience – Literacy and numeracy test.		Personal Statement. See study.federation.edu.au	

Admission pathways



Are you eligible for credit?

Having completed a TAFE course, you may be eligible for credit into a degree within a similar field of study. Below is a list of some of our more popular pathways, and an indication of likely credit.

federation.edu.au/tafe-to-uni

VET QUALIFICATION [^]	FEDERATION UNIVERSITY DEGREE	CREDIT POINTS
Certificate IV in Training and Assessment <i>plus</i> Any industry qualification at Certificate III or above	> Associate Degree of Vocational Education and Training <i>Additional entry requirements apply (industry experience)</i>	120
Certificate IV in Training and Assessment <i>plus</i> Any industry qualification at Certificate III or above <i>plus</i> Diploma of VET TAE50111 or TAE50116; <i>or</i> Diploma of VET Practice 21697VIC	> Associate Degree of Vocational Education and Training <i>Additional entry requirements apply (industry experience)</i>	150
Diploma of Community Services CHC52015 Diploma of Alcohol and Other Drugs CHC53215 Diploma of Youth Work CHC50413 Diploma of Business BSB50120 Diploma of Leadership and Management BSB50420 Diploma of Accounting FNS50217 Diploma of Professional Writing and Editing CAU50118	> Bachelor of Arts	60
Advanced Diploma of Accounting FNS60217	> Bachelor of Arts	120
Diploma of Community Services CHC52015 Diploma of Community Services Forensic/Statutory Stream (ACWA Accredited) CHC52015 Diploma of Community Services Case Management Specialisation CHC52015 Diploma of Alcohol and Other Drugs CHC53215 Diploma of Mental Health CHC53315 Diploma of Youth Work CHC50413	> Bachelor of Community and Human Services	120
Diploma of Nursing HLT54121	> Bachelor of Nursing > Bachelor of Occupational Therapy (Honours)	120 Nil*
Diploma of Community Services CHC52015 Diploma of Youth Work CHC50413 Diploma of Alcohol and Other Drugs CHC53215	> Bachelor of Criminology and Criminal Justice	30
Diploma of Justice 22320VIC	> Bachelor of Criminology and Criminal Justice	120
Advanced Diploma of Justice 22321VIC	> Bachelor of Criminology and Criminal Justice	180
Diploma of Leadership and Management BSB50420 Diploma of Accounting FNS50217	> Bachelor of Criminal Justice Management	60
Diploma of Early Childhood Education and Care CHC50121	> Bachelor of Education (Early Childhood and Primary) > Bachelor of Education (Early Childhood Education)	90 120
Diploma of Project Management BSB50820 Diploma of Business BSB50120 & BSB50215 Advanced Diploma of Human Resource Management BSB60320	> Bachelor of Business	120
Diploma of Business BSB50120 & BSB50215	> Bachelor of Business <i>Additional entry requirements apply</i>	120
Diploma of Business BSB50120	> Bachelor of Business (Management) > Bachelor of Business (Marketing) > Bachelor of Business (Banking and Finance)	120
Advanced Diploma of Business BSB60120	> Bachelor of Business (Management) > Bachelor of Business (Marketing) > Bachelor of Business (Banking and Finance)	135

VET QUALIFICATION [^]	FEDERATION UNIVERSITY DEGREE	CREDIT POINTS
Diploma of Leadership and Management BSB50420	> Bachelor of Professional Accounting	60
Advanced Diploma of Business BSB60120 Diploma of Business BSB5012	> Bachelor of Professional Accounting	45
Advanced Diploma of Leadership and Management BSB60420	> Bachelor of Professional Accounting	120
	> Bachelor of Business	180
Advanced Diploma of Human Resource Management BSB60320	> Bachelor of Business <i>Additional entry requirements apply</i>	180
Diploma of Accounting FNS50217	> Bachelor of Professional Accounting	120
Advanced Diploma of Accounting FNS60217	> Bachelor of Professional Accounting	180
Diploma of Information Technology ICT50220 Diploma of Information Technology (Higher Education)	> Bachelor of Information Technology > Bachelor of Information Technology (Big Data Analytics) > Bachelor of Information Technology (Business Information Systems) > Bachelor of Information Technology (Networking and Security) > Bachelor of Information Technology (Software Development)	120
	> Bachelor of Information Technology (Professional Practice) <i>Stream is subject to additional entry requirements (competitive entry)</i>	60
Diploma of Information Technology ICT50220 Advanced Diploma of Information Technology ICT60220	> Bachelor of Information Technology > Bachelor of Information Technology (Big Data & Analytics) > Bachelor of Information Technology (Business Information Systems) > Bachelor of Information Technology (Networking & Security) > Bachelor of Information Technology (Software Development)	180
Advanced Diploma of Information Technology ICT60220	> Bachelor of Information Technology	150
Diploma of Project Management BSB50820 Advanced Diploma of Program Management BSB60720	> Bachelor of Information Technology	75
Diploma of Digital Media Technologies ICT50915	> Bachelor of Information Technology > Bachelor of Information Technology (Big Data Analytics) > Bachelor of Information Technology (Business Information Systems) > Bachelor of Information Technology (Networking and Security) > Bachelor of Information Technology (Software Development)	90
	> Bachelor of Information Technology (Professional Practice) <i>Stream is subject to additional entry requirements (competitive entry)</i>	30
Diploma of Conservation and Ecosystem Management AHC51120 Diploma of Conservation and Land Management AHC51116	> Bachelor of Environmental and Conservation Science	120
Advanced Diploma of Agribusiness Management AHC60316 Advanced Diploma of Applied Agronomy AHC51920	> Bachelor of Business	75
Diploma of Engineering – Technical MEM50222 Diploma of Engineering Technology MEM22478	> Bachelor of Engineering (Mechanical) (Honours) > Bachelor of Engineering (Mechatronics and Robotics Engineering) (Honours) > Bachelor of Engineering (Mining) (Honours) > Bachelor of Engineering (Civil) (Honours) > Bachelor of Engineering (Electrical and Information Engineering) (Honours)	60
Diploma of Food Science and Technology FBP50121	> Bachelor of Sustainable Food Systems	180
Diploma of Sport SIS50319 <i>and</i> Diploma of Business BSB50215	> Bachelor of Exercise & Sport Science	Nii*
	> Bachelor of Outdoor & Environmental Education > Bachelor of Sport, Physical & Outdoor Education > Bachelor of Business	120
	> Bachelor of Visual Arts	30

[^] Qualification must be obtained from a registered TAFE or private provider (RTO).

* Entry pathway only – completion of these VET programs meets entry requirements.

Keep in mind that while completion of a certificate may not earn credit towards a degree, in many cases a TAFE certificate may satisfy entry requirements.

Visit our Course Finder for all entry requirements into your degree. study.federation.edu.au



At Federation TAFE, we're known for our high-quality teaching and training courses. Everything we do is designed to help you get ahead in your career, or simply take that first step into post-secondary education. For more than 150 years, our courses have been driven by research, taught by some of the most experienced people in the business, and have always responded to the changing needs of industry.

Why Federation TAFE?

Great teachers

You'll be learning from some of the best in their field. Our teachers have industry experience and know what it is like starting out and how to get ahead.

Great facilities

Our Building and Construction Training Centre and Manufacturing and Engineering Skills Centre have been designed to replicate trade industry environments and help our TAFE students meet the challenges of the workplace head on. At SMB there's also a hairdressing and beauty salon, commercial kitchens, training restaurant and automotive workshops.

Great connections

Through our experienced teachers and long-standing relationships in the trade training business, we've built strong links with local industries and businesses.

TAFE Qualifications

Pre-apprenticeships

Learn about your chosen career through completing a pre-apprenticeship, and show employers you have the knowledge and skills to hit the ground running. Most courses take 14 to 18 weeks, and earn up to 6 months credit towards apprenticeship training.

Apprenticeships and Traineeships

Before enrolling, apprentices and trainees need to be employed in their industry, including a signed training agreement. Most apprenticeships or traineeships are Certificate II or III level courses.

Certificate IV, Diploma, Advanced Diplomas

Certificate IV courses train you for supervisory and management positions. Diploma courses teach skills in professional, technical or creative fields. Advanced Diploma courses teach high-level skills in technical, professional and creative fields.

Study modes

Most TAFE students will study on campus, or at one of our teaching locations. See [federation.edu.au/studymodes](https://www.federation.edu.au/studymodes)

Extra Requirements

Many industries need their workers to hold a Working With Children's Check (WCC) and/or a Police Check before they start a placement or employment. See [study.federation.edu.au](https://www.study.federation.edu.au)

LLN Assessment

Before starting a TAFE course, you'll need to undertake a Language, literacy and numeracy assessment, Digital capability testing and a Pre-training review.

Free TAFE for Priority Courses

Get access to free training through the Victorian Government's Free TAFE initiative. This covers tuition fees for priority courses. See [federation.edu.au/freetafe](https://www.federation.edu.au/freetafe)

VET Information Guide (TAFE Handbook)

See [federation.edu.au/current-students/essential-info/publications/handbook](https://www.federation.edu.au/current-students/essential-info/publications/handbook)

For information on all TAFE courses visit [federation.edu.au/tafe](https://www.federation.edu.au/tafe)

Allied Health

Bachelor of Occupational Therapy (Honours)

Make a meaningful difference in the community with an occupational therapy degree. Assist and empower people to overcome limitations in their daily lives and occupations. Our degree focuses on contemporary occupational therapy practice and is based on real-life scenarios and cases.

LOCATION	DURATION	GUARANTEED ATAR	APPLICATION
Gippsland	4 years	70	VTAC / Direct
ENTRY REQUIREMENTS			
Units 1 and 2: satisfactory completion in two units (any study combination) of any Mathematics or Units 3 and 4: one of Biology, Chemistry, Health and Human Development, any Mathematics, Physical Education or Physics; Units 3 and 4: a study score of at least 25 in any English.			
ENTRY REQUIREMENTS (NON-YEAR 12)			
Higher Education, VET and/or Work/Life Experience.			
ESSENTIAL REQUIREMENTS			
Working with Children Check, Police record check. See study.federation.edu.au			
PROFESSIONAL RECOGNITION			
Subject to accreditation by Australian Occupational Therapy Council (OTC)			

Bachelor of Physiotherapy

Physiotherapists assess, diagnose and rehabilitate acute and chronic musculoskeletal, neurological and cardiovascular disease. With a focus on the physiotherapist-client relationship, this course is highly practical in its orientation and provides graduates with the skills to work with everyone from children to the elderly (including 1094 hours of clinical placements).

LOCATION	DURATION	GUARANTEED ATAR	APPLICATION
Gippsland	4 years	90	VTAC / Direct
ENTRY REQUIREMENTS			
Units 3 and 4: A study score of at least 25 in any English. Units 1 to 4: one of Biology, Chemistry, Health And Human Development, Physical Education or Physics.			
ENTRY REQUIREMENTS (NON-YEAR 12)			
Undergraduate degree in any discipline; relevant life experience is desirable.			
PROFESSIONAL RECOGNITION			
Australian Physiotherapy Council; registration with the Physiotherapy Board of Australia and New Zealand through the Australian Health Practitioner Regulation Agency (AHPRA).			

Bachelor of Speech Pathology (Honours)

Core studies in the first two years of this degree will help you build a solid foundation to diagnose and treat communication disorders, including difficulties with speech, language, fluency and voice. In third and fourth year, you may pursue your interests by selecting either the professional honours or research honours, where you will work on an individual project. As a graduate, you may work in public and private settings as a clinician, educator, policy advisor, manager, advocate, consultant and in other aligned roles.

LOCATION		
Ballarat, ^{FLEX} Ballarat, Berwick, Gippsland, ^{FLEX} Gippsland		
DURATION	GUARANTEED ATAR	APPLICATION
4 years	85	VTAC / Direct
ENTRY REQUIREMENTS		
Units 3 and 4: a study score of at least 25 in any English. Other: A study score of at least 25 in one of the following: Maths (any from units 1-4), Chemistry, Physics, Biology, Health Education or Physical Education.		
ENTRY REQUIREMENTS (NON-YEAR 12)		ESSENTIAL REQUIREMENTS
Higher Education, VET and/or Work/Life Experience.		Working with Children Check, Police record check. See study.federation.edu.au

Graduate Certificate in Health (Workplace Health and Safety)

Develop, implement and evaluate workplace health and safety interventions by utilising strong evidence based practice.

LOCATION	DURATION	ATAR	APPLICATION
Ballarat, Online	0.5 year	Not required	Direct
ENTRY REQUIREMENTS (NON-YEAR 12)		ESSENTIAL REQUIREMENTS	
Bachelor's degree. See study.federation.edu.au		See study.federation.edu.au	
PROFESSIONAL RECOGNITION			
Accredited by the Safety Institute of Australia (SIA).			

Graduate Diploma of Health (Workplace Health and Safety)

Develop, implement and evaluate workplace health and safety interventions by utilising strong evidence based practice.

LOCATION	DURATION	ATAR	APPLICATION
Ballarat	1 year	Not required	Direct
ENTRY REQUIREMENTS (NON-YEAR 12)		ESSENTIAL REQUIREMENTS	
Bachelor's degree. See study.federation.edu.au		See study.federation.edu.au	
PROFESSIONAL RECOGNITION			
Accredited by the Safety Institute of Australia (SIA).			

GUARANTEED ATAR See definition on p 75

^{FLEX}Flexible delivery is a blend of online study with regular, scheduled on-campus classes.



Graduate Diploma of Public Health

Gain the knowledge and skills in relation to public health principles, values, ethics, research and practice for improving population health status locally and internationally. Also available as a graduate certificate (6 months).

LOCATION Ballarat, Berwick, Gippsland, Online		
DURATION 1 year	ATAR Not required	APPLICATION Direct
ENTRY REQUIREMENTS (NON-YEAR 12) Bachelor's degree. See study.federation.edu.au		ESSENTIAL REQUIREMENTS See study.federation.edu.au

Master of Health (Health Services Management)

Focusing on safety and quality, learn how policy, leadership and strategic management each play a central role. Drive change and innovation in the workplace. Also available as a graduate certificate and graduate diploma.

LOCATION Online	DURATION 2 years	ATAR Not required	APPLICATION Direct
ENTRY REQUIREMENTS (NON-YEAR 12) Bachelor's degree. See study.federation.edu.au			

Master of Health (Workplace Health and Safety)

This course aims to assist Workplace Health and Safety (WH&S) professionals further develop, implement and evaluate WH&S interventions by utilising strong evidence based practice.

LOCATION Ballarat, Online	DURATION 2 years	ATAR Not required	APPLICATION Direct
ENTRY REQUIREMENTS (NON-YEAR 12) Bachelor's degree. See study.federation.edu.au			

Master of Public Health

With a strong emphasis on research, this course provides professionals with enhanced skills to pursue a career in public health. Specialisations include research, project, public health informatics, public health economics and health system management. Also incorporating graduate diploma and graduate certificate.

LOCATION Ballarat, Berwick, Online		
DURATION 2 years	ATAR Not required	APPLICATION Direct
ENTRY REQUIREMENTS (NON-YEAR 12) Bachelor's degree. See study.federation.edu.au		

Master of Speech Pathology

If you have completed an undergraduate degree in a cognate area such as health science, education or nursing, this course will help you build specialist knowledge in diagnosing and treating people of all ages with communication and/or swallowing disorders as a result of illness, injury or disability. Completion of this course qualifies you to work as a speech pathologist, as either a sole therapist or as part of an interdisciplinary team.

LOCATION FLEX Ballarat, FLEX Gippsland		
DURATION 2 years	ATAR Not required	APPLICATION Direct
ENTRY REQUIREMENTS (NON-YEAR 12) See study.federation.edu.au		

#1 IN AUSTRALIA & ★★★★★
OVERALL EDUCATION EXPERIENCE

#1 VICTORIA & ★★★★★
LEARNER ENGAGEMENT

LEARNING RESOURCES

SKILLS DEVELOPMENT

STUDENT SUPPORT

TEACHING QUALITY

REHABILITATION

REHABILITATION

The Good Universities Guide, undergraduate level 2022

FLEX Flexible delivery is a blend of online study with regular, scheduled on-campus classes.



TAFE

Automotive

Certificate II in Automotive Vocational Preparation

Gain the skills to pursue an apprenticeship in automotive mechanics, engine reconditioning, automotive electrician and electronics, and vehicle body repair.

NATIONAL COURSE CODE AUR20720	FREE TAFE Yes	LOCATION Ballarat (SMB)
STUDY TYPE Pre-apprenticeship	DURATION 20 weeks	CONTACT PER WEEK 3 days
ENTRY REQUIREMENTS Language, literacy and numeracy assessment and Pre-training review.		

Certificate III in Light Vehicle Mechanical Technology

With our apprenticeship course, you'll learn how to service and repair the mechanical parts of motor vehicles.

NATIONAL COURSE CODE AUR30620	FREE TAFE No	LOCATION Ballarat (SMB)
STUDY TYPE Apprenticeship	DURATION 4 years	CONTACT PER WEEK 3-4 days (9-10 blocks per year)
ENTRY REQUIREMENTS Language, literacy and numeracy assessment and Pre-training review.		

Automotive teacher John Francis shared his expertise as a judge at the 2022 WorldSkills International event in Dresden, Germany.

15 of Australia's best young apprentices and trainees ('Skillaroos'), competed against their counterparts from 60 other countries hoping to become World Champions in their chosen trade or skill area. John worked closely with Skillaroo Nicholas McLaren, ensuring Nick's ability was at international standard as he represented Australia.

Having worked in the industry for over 40 years, John took significant experience to his WorldSkills role - originally competing as an apprentice in 1983 and winning a silver medal. For the past 15 years he has acted as both a chief judge and automobile technology expert representing Australia at two other international competitions in Brazil (2015) and Russia (2019).

John has also mentored competitors for national and international competitions, coaching them to gold medals and Medallions of Excellence.

"John is a passionate and dedicated teacher and his selection as a WorldSkills expert is fitting and well deserved. His significant knowledge and experience in the automotive industry is a real asset to Federation TAFE and our students. Worldskills International competitors also benefit from his expertise," said Liam Sloan, Federation University Pro Vice-Chancellor (Vocational Education and Training) and CEO TAFE.

John Francis
Federation TAFE Automotive Teacher

Building and Construction

Certificate II in Building and Construction Pre-apprenticeship

Choose between bricklaying, carpentry or painting and decorating streams, and take a step closer to securing an apprenticeship.

NATIONAL COURSE CODE 22338VIC	FREE TAFE No	LOCATION Ballarat (SMB)
STUDY TYPE Pre-apprenticeship	DURATION 14 weeks	CONTACT PER WEEK 3-4 days
ENTRY REQUIREMENTS Year 10, age 16. Language, literacy and numeracy assessment and Pre-training review.		

Certificate II in Electrotechnology (Career Start)

This pre-apprenticeship course will give you the foundation skills to kick-start an electrical apprenticeship.

NATIONAL COURSE CODE UEE22020	FREE TAFE Yes	LOCATION Ballarat (SMB)
STUDY TYPE Pre-apprenticeship	DURATION 16-23 weeks	CONTACT PER WEEK 2-3 days
ENTRY REQUIREMENTS Year 10, age 16. Language, literacy and numeracy assessment and Pre-training review.		

Certificate II in Furniture Making

Learn how to make free-standing furniture and built-in cabinets while also skilling up to install these structures on site, and take a step closer to securing an apprenticeship.

NATIONAL COURSE CODE MSF20313	FREE TAFE Yes	LOCATION Ballarat (SMB)
STUDY TYPE Pre-apprenticeship	DURATION 10 weeks	CONTACT PER WEEK 4 days
ENTRY REQUIREMENTS Year 10, age 16. Language, literacy and numeracy assessment and Pre-training review.		

Certificate II in Plumbing (Pre-apprenticeship)

Prepare yourself for your plumbing apprenticeship with this 26 week practical course.

NATIONAL COURSE CODE 22569VIC	FREE TAFE Yes	LOCATION Ballarat (SMB)
STUDY TYPE Pre-apprenticeship	DURATION 26 weeks	CONTACT PER WEEK 2 days
ENTRY REQUIREMENTS Language, literacy and numeracy assessment and Pre-training review.		

Certificate III in Bricklaying and Blocklaying

Work for yourself, set up your own building business, work for major construction companies or as a subcontractor on residential builds.

NATIONAL COURSE CODE CPC33020	FREE TAFE No	LOCATION Ballarat (SMB)
STUDY TYPE Apprenticeship	DURATION 3 years	CONTACT PER WEEK 3 days
ENTRY REQUIREMENTS Signed training contract with employer and apprentice (AAC). Language, literacy and numeracy assessment and Pre-training review.		



Certificate III in Cabinet Making

Specialise in free-standing furniture design and making by fabricating custom pieces and hand-making timber joints. You can also focus on fitting out kitchens and bathrooms by learning about creating and installing cabinets for the built-in environment.

NATIONAL COURSE CODE MSF31113	FREE TAFE No	LOCATION Ballarat (SMB)
STUDY TYPE Apprenticeship	DURATION 4 years	CONTACT PER WEEK 5 days during on-campus blocks
ENTRY REQUIREMENTS Signed training contract with employer and apprentice (AAC). Language, literacy and numeracy assessment and Pre-training review.		

Certificate III in Carpentry

Become a master tradesperson, who specialises in carpentry. You'll become a pro at building external staircases, constructing wall frames and installing windows and doors.

NATIONAL COURSE CODE CPC30220	FREE TAFE No	LOCATION Ballarat (SMB)
STUDY TYPE Apprenticeship	DURATION 4 years	CONTACT PER WEEK 3 days
ENTRY REQUIREMENTS Signed training contract with employer and apprentice (AAC). Language, literacy and numeracy assessment and Pre-training review.		

Certificate III in Electrotechnology Electrician

Study this certificate while you complete your apprenticeship then you can apply for an A Grade Electrical Licence through an approved Energy Safe Victoria examination process.

NATIONAL COURSE CODE UEE30820	FREE TAFE No	LOCATION Ballarat (SMB)
STUDY TYPE Apprenticeship	DURATION 4 years	CONTACT PER WEEK 5 days during on-campus blocks
ENTRY REQUIREMENTS Signed training contract with employer and apprentice (AAC). Language, literacy and numeracy assessment and Pre-training review.		

Certificate III in Painting and Decorating

Become a go-to for style with this trade outcome in painting and decorating, for residential and commercial construction work.

NATIONAL COURSE CODE CPC30620	FREE TAFE No	LOCATION Ballarat (SMB)
STUDY TYPE Apprenticeship	DURATION 4 years	CONTACT PER WEEK 4 day blocks, 8 blocks per year
ENTRY REQUIREMENTS Signed training contract with employer and apprentice (AAC). Language, literacy and numeracy assessment and Pre-training review.		

Certificate III in Plumbing

You'll learn about the six key streams of the plumbing industry, including core and specialist areas from water to drainage, mechanical services to roofing and more.

NATIONAL COURSE CODE CPC32420	FREE TAFE No	LOCATION Ballarat (SMB)
STUDY TYPE Apprenticeship	DURATION 4 years	CONTACT PER WEEK 5 days during on-campus blocks
ENTRY REQUIREMENTS Signed training contract with employer and apprentice (AAC). Language, literacy and numeracy assessment and Pre-training review.		



Certificate IV in Building and Construction (Building)

Prepare to apply for your registration as a domestic builder and manage a successful construction site or residential building business.

NATIONAL COURSE CODE CPC40120	FREE TAFE Yes	LOCATION Ballarat (SMB)
DURATION 1 year	CONTACT PER WEEK 2 evenings	
STUDY TYPE Study may include full-time, part-time, on-campus, flexible delivery, workshops, block mode and blended delivery.		
ENTRY REQUIREMENTS Language, literacy and numeracy assessment and Pre-training review. Recommended 3 years experience.		

Diploma of Building and Construction (Building)

Build on your career and gain your builders registration to manage residential, industrial or commercial building projects.

NATIONAL COURSE CODE CPC50220	FREE TAFE Yes	LOCATION Ballarat (SMB)
DURATION 1 year	CONTACT PER WEEK 3 days (incl evenings/online)	
STUDY TYPE Study may include full-time, part-time, on-campus, flexible delivery, workshops, block mode and blended delivery.		
ENTRY REQUIREMENTS Language, literacy and numeracy assessment and Pre-training review. Recommended 8 years experience (4 years as apprentice).		

Advanced Diploma of Building Design (Architectural)

Learn about digital designs and construction technologies whilst visiting real work sites. Work alongside architects, manufacturers and building contractors.

NATIONAL COURSE CODE 22477VIC	FREE TAFE No	LOCATION Ballarat (SMB)
DURATION 2.5 years	CONTACT PER WEEK 4 days	
STUDY TYPE Study may include full-time, part-time, on-campus, flexible delivery, workshops, block mode and blended delivery.		
ENTRY REQUIREMENTS Language, literacy and numeracy assessment and Pre-training review.		

Advanced Diploma of Building Surveying

Become an expert in residential and commercial construction methods in order to play a crucial role in the initial planning through to final inspection of construction projects.

NATIONAL COURSE CODE CPC60121	FREE TAFE Yes	LOCATION Ballarat (SMB)
DURATION 2 years	CONTACT PER WEEK 1 evening, 1 day	
STUDY TYPE Study may include full-time, part-time, on-campus, flexible delivery, workshops, block mode and blended delivery.		
ENTRY REQUIREMENTS Year 12 recommended. Work/life experience within the industry. Language, literacy and numeracy assessment and Pre-training review.		

Business

Certificate III in Business - Traineeship

Learn the skills required to start your career in business and administration services. Careers lead into the public and private sector, including but not limited to the medical, legal, real estate, accounting, government and hospitality sectors.

NATIONAL COURSE CODE BSB30120	FREE TAFE No	LOCATION Ballarat
DURATION 1 year	CONTACT PER WEEK 3 hours/week workplace training	
STUDY TYPE Traineeship. Study may include full-time, part-time, on-campus, flexible delivery, workshops, block mode and blended delivery.		
ENTRY REQUIREMENTS Language, literacy and numeracy assessment and Pre-training review.		

Certificate IV in Accounting and Bookkeeping

Learn the core accounting skills needed to become a registered BAS agent or certified bookkeeper - whether that is across payroll, activity statements or the latest in cloud computing software. Qualify for self employment as a contractor or to work for an organisation from an endless number of industries.

NATIONAL COURSE CODE FNS40222	FREE TAFE Yes	LOCATION Ballarat
DURATION 1 year	CONTACT PER WEEK 4 hours	
STUDY TYPE Study may include full-time, part-time, on-campus, flexible delivery, workshops, block mode and blended delivery.		
ENTRY REQUIREMENTS Language, literacy and numeracy assessment and Pre-training review.		

Diploma of Business

Regardless of your experience, build on your business operations skills to carry out specialist expertise for frontline management positions.

NATIONAL COURSE CODE BSB50120	FREE TAFE No	LOCATION Ballarat
DURATION 1 year	CONTACT PER WEEK 5 hours	
STUDY TYPE Study may include full-time, part-time, on-campus, flexible delivery, workshops, block mode and blended delivery.		
ENTRY REQUIREMENTS Language, literacy and numeracy assessment and pre-training review.		

Diploma of Business (Higher Education)

This course sees students' progress through two stages. During stage one, students study management, creativity, innovation, marketing and contemporary business. In stage two students study accounting, economics, statistics and fundamentals of law. At the conclusion of stage two, graduates may continue into the second year of a Bachelor of Business.

LOCATION Ballarat, Berwick		
DURATION 1 year	ATAR Required	APPLICATION Direct
ENTRY REQUIREMENTS Units 3 and 4: a study score of at least 20 in any English or English (EAL).		
ENTRY REQUIREMENTS (NON-YEAR 12) Higher Education, VET and/or Work/Life Experience.		
PATHWAY Bachelor of Business (120 credit points).		

#1 IN VICTORIA & ★★★★★

LEARNER ENGAGEMENT

BUSINESS AND MANAGEMENT

The Good Universities Guide, postgraduate level 2022

★★★★★ MEDIAN GRADUATE

INCOME ONE YEAR

BUSINESS AND MANAGEMENT

The Good Universities Guide, Undergraduate level 2022

"I now have a job that I love, including a career and qualifications that can take me anywhere that I wish... if I ever need that change again."

Emma Schoenfelder
Diploma of Business



Bachelor of Business

The Bachelor of Business is a contemporary degree developed in collaboration with industry and designed to meet the needs of businesses. Choose from majors in Marketing, Management, or Banking and Finance. This course produces 'job-ready' graduates through providing industry placement and internship opportunities.

LOCATION Ballarat, Berwick, Gippsland, Online		
DURATION 3 years	GUARANTEED ATAR 50	APPLICATION VTAC / Direct
ENTRY REQUIREMENTS Units 3 and 4: a study score of at least 20 in any English		
ENTRY REQUIREMENTS (NON-YEAR 12) Higher Education, VET and/or Work/Life Experience.		
PATHWAY BSB60420 Advanced Diploma of Leadership and Management (180 credit points); BSB60320 Advanced Diploma of Human Resource Management (180 credit points); BSB60120 Advanced Diploma of Business (135 credit points); BSB50820 Diploma of Project Management (120 credit points); BSB50120 & BSB50215 Diploma of Business (120 credit points); BSB51915 & BSB50420 Diploma of Leadership and Management (120 credit points); AHC60316 Advanced Diploma of Agribusiness Management (75 credit points); AHC51920 Diploma of Agribusiness Management (75 credit point).		

Bachelor of Business (Honours)

Gain knowledge in one of the specialist areas in a business-related discipline. Conduct independent high-quality research in business and academic settings, cultivate analytical and critical skills and an awareness of emerging developments in business.

LOCATION Ballarat, Berwick, Gippsland, Online		
DURATION 1 year	ATAR Not required	APPLICATION Direct
ENTRY REQUIREMENTS (NON-YEAR 12) Previous higher education studies with a minimum GPA.		

Emma Whatarau recently completed a work placement with the City of Casey, endorsing Federation's aim of providing students with real-world experience during their studies.

"Working with the People & Culture team at the City of Casey has been invaluable for my future career," Emma said.

"My experience has strengthened my organisational skills, enhanced my confidence in building professional connections and provided me with a greater understanding of operating within a Corporate Services function, at a diverse and community focussed organisation."

Highlighting the success of her placement, Emma has since taken up temporary work with the City of Casey.

Emma Whatarau
Bachelor of Business

Bachelor of Professional Accounting

This comprehensive course is designed for people with an aptitude for numbers and desire to forge a professional accounting career. You will have the opportunity to undertake a practical placement, internship or project, making you more employable in the marketplace.

LOCATION Ballarat, Berwick, Gippsland, Online		
DURATION 3 years	GUARANTEED ATAR 50	APPLICATION VTAC / Direct
ENTRY REQUIREMENTS Units 3 and 4: a study score of at least 20 in any English.		
ENTRY REQUIREMENTS (NON-YEAR 12) Higher Education, VET and/or Work/Life Experience.		
PATHWAY FNS60217 Advanced Diploma of Accounting (180 credit points); FNS50217 Diploma of Accounting (120 credit points); BSB51915 & BSB50420 Diploma of Leadership and Management (60 credit points); BSB50120 Diploma of Business (45 credit point)		

Master of Business Administration

Designed for small business owners, entrepreneurs, leaders and those with the innate drive to rise up the ladder, this course gives you the competitive edge. Federation University lecturers, with facilitators from industry, will lead workshops on innovation, network building and startup thinking. Also available as a graduate diploma and graduate certificate.

LOCATION Ballarat		
DURATION 1.5 years accelerated	ATAR Not required	APPLICATION Direct
ENTRY REQUIREMENTS (NON-YEAR 12) Bachelor's degree, or exceptional work experience. See study.federation.edu.au		

GUARANTEED ATAR See definition on p 75





Education and Early Childhood



Certificate III in Early Childhood Education and Care

Develop the skills and knowledge you need to commence working in the Australian childcare industry, providing care for children from birth up to 12 years old. Study as a trainee or on-campus and undertake a minimum of 160 hours practical placement within industry.

NATIONAL COURSE CODE CHC30121	FREE TAFE Yes	LOCATION Ballarat, Wimmera
DURATION 1 year	CONTACT PER WEEK Ballarat: 3 days Wimmera: 2 days (1 online)	
STUDY TYPE Traineeship or study may include full-time, part-time, on-campus, flexible delivery, workshops, block mode and blended delivery.		
ENTRY REQUIREMENTS Language, literacy and numeracy assessment and Pre-training review. Working with Children Check, Police Check.		

Certificate III in School Based Education Support

Undertake 100 hours practical placement within a school, working with teachers in the classroom environment to build on classroom knowledge. Gain the skills to assist children with different development issues in a safe and supportive classroom environment. Work as a teacher's aide, education assistant or education officer.

NATIONAL COURSE CODE CHC30221	FREE TAFE Yes	LOCATION Ballarat
DURATION 1 year	CONTACT PER WEEK 2 days	
STUDY TYPE Study may include full-time, part-time, on-campus, flexible delivery, workshops, block mode and blended delivery.		
ENTRY REQUIREMENTS Language, literacy and numeracy assessment and Pre-training review. Working with Children Check, Police Check.		

Certificate IV in School Based Education Support

Work collaboratively with teachers to support students with special needs including disabilities or autism spectrum disorder, culturally diverse students and students at risk. You will also study child development and be skilled in supporting students' literacy and numeracy learning.

NATIONAL COURSE CODE CHC40221	FREE TAFE Yes	LOCATION Ballarat
DURATION 11 months	CONTACT PER WEEK 2 days	
STUDY TYPE Study may include full-time, part-time, on-campus, flexible delivery, workshops, block mode and blended delivery.		
ENTRY REQUIREMENTS Language, literacy and numeracy assessment and Pre-training review. Working with Children Check, Police Check.		

Certificate IV in Training and Assessment

This course will get you ready for a career within the National Vocational Education and Training (VET) sector. If you are already working within the sector, then join us to upgrade your qualification to meet the industry standard.

NATIONAL COURSE CODE TAE40116	FREE TAFE Yes	LOCATION Ballarat
DURATION 37 weeks part-time	CONTACT PER WEEK 2 days	
STUDY TYPE Study may include full-time, part-time, on-campus, flexible delivery, workshops, block mode and blended delivery.		
ENTRY REQUIREMENTS Language, literacy and numeracy assessment and Pre-training review. Working with Children Check, Police Check optional.		
PATHWAY TO Associate Degree of Vocational Education and Training (120 credit points)		

Diploma of Early Childhood Education and Care

Gain the skills, knowledge and understanding required to work with children across a range of early childhood education settings. With a minimum of 280 placement hours, Diploma-qualified educators can then provide education and care which enhances and supports the holistic development of infants and children up to the age of 12. They work closely with primary carers.

NATIONAL COURSE CODE CHC50121	FREE TAFE Yes	LOCATION Ballarat, Wimmera
DURATION 2 years	CONTACT PER WEEK 2 days	
STUDY TYPE Traineeship or study may include full-time, part-time, on-campus, flexible delivery, workshops, block mode and blended delivery.		
ENTRY REQUIREMENTS Certificate III in Early Childhood Education and Care. Language, literacy and numeracy assessment and Pre-training review. Working with Children Check, Police Check.		
PATHWAY TO Bachelor of Education (Early Childhood and Primary) (90 credit points) Bachelor of Education (Early Childhood Education) (120 credit points)		

During his 20-year engineering career, Paul Hunton never imagined he would one day become a teacher.

His career included stints in uranium and coal mines, on the Alice to Darwin Rail Link, and time working on wharves. Now the Federation TAFE Engineering teacher can't imagine doing anything else.

"It's a career I fell into after having a workplace accident. While recovering from my injuries I was put in the workshop with all the apprentices. My supervisor noticed I had an ability to get them to work and learn better, so offered to pay for my Certificate IV in Training and Assessment (TAFE) as

part of my rehabilitation. That's how I got started and branched out into teaching."

Paul now delivers the Certificate II in Engineering Studies, Certificate III in Engineering – Fabrication Trade, as well as Basic Technical Training for wind turbine technicians at Ballarat and Horsham locations.

To become a VET teacher, you must have current industry expertise in the field in which you'll be teaching and complete a Certificate IV in Training and Assessment.

Paul Hunton
Certificate IV in Training and Assessment

Associate Degree of Vocational Education and Training

This qualification is for teachers and trainers within the vocational education and training sector, in TAFE, Registered Training Organisations, industry or adult education settings; or for people wishing to work in such settings. The course equips VET teachers and trainers with high-level skills and knowledge to handle the challenges of industry engagement, new modes of learning and a changing VET environment.

LOCATION Online	DURATION Up to 2 years	ATAR Not required	APPLICATION Direct
ENTRY REQUIREMENTS Certificate IV in Training and Assessment, 4 years experience, industry qualification of Certificate III or above.			
PATHWAY TAE40116 Certificate IV in Training and Assessment (120 credit points towards Bachelor degree); TAE50111/TAE50116 or 21697VIC Diploma of VET/VET Practice; Certificate IV in Training and Assessment TAE; plus industry qualification at Cert III or above; plus industry experience (150 credit points).			

Bachelor of Education (Early Childhood Education)

Become a confident kindergarten teacher with Federation University. You may be working in the early childhood field and want to upskill, straight out of school or changing careers. Our students undertake 80 days of supervised teaching placement and can participate in voluntary overseas placements. A range of scholarships are also available to help support your dream of an early childhood career.

LOCATION Ballarat, Berwick, Gippsland, ^{CHISHOLM} Frankston, ^{FOL} Federation Online		
DURATION 3 years	GUARANTEED ATAR 55	APPLICATION VTAC / Direct
ENTRY REQUIREMENTS Units 3 and 4: a study score of at least 20 in any English and Units 1 and 2: satisfactory completion in two units (any study combination) of any Mathematics or Units 3 and 4: any Mathematics.		
ENTRY REQUIREMENTS (NON-YEAR 12) Higher Education, VET and/or Work/Life Experience. Literacy & Numeracy test required if VCE benchmarks not met.		
ESSENTIAL REQUIREMENTS Working with Children Check, Police Check optional. See study.federation.edu.au		
PROFESSIONAL RECOGNITION Victorian Institute of Teaching (VIT); ACECQA.		
PATHWAY CHC50121 Diploma of Early Childhood Education and Care (120 credit points towards Bachelor degree); or 4 years combined course length		

Bachelor of Education (Early Childhood and Primary)

Gain the skills and knowledge to be a confident teacher from pre-school through to Year 6. Learn exactly what type of teacher you are and how to use your unique skills - you may choose to work with children with disabilities or support those who are disengaged with learning. You will undertake 110 days of supervised teaching placement in both early childhood and primary settings. In addition you may participate in voluntary overseas placements in locations such as Timor Leste, England, China, New Zealand and Nepal.

LOCATION Ballarat, Berwick, Gippsland, Online		
DURATION 4 years	GUARANTEED ATAR 70	APPLICATION VTAC / Direct
ENTRY REQUIREMENTS Units 1 and 2: satisfactory completion in two units (any study combination) of Maths: General Mathematics, Maths: Mathematical Methods or Maths: Specialist Mathematics or Units 3 and 4: any Mathematics; Units 3 and 4: a study score of at least 30 in English (EAL) or at least 25 in English other than EAL.	ENTRY REQUIREMENTS (NON-YEAR 12) Higher Education, VET and/or Work/Life Experience. Literacy & Numeracy test required if VCE benchmarks not met.	
ESSENTIAL REQUIREMENTS Altus Suite online test. Working with Children Check, Police Check optional. See study.federation.edu.au		
PROFESSIONAL RECOGNITION Australian Institute of Teaching and School Leadership (AITSL); Australian Children's Education and Care Quality Authority (ACECQA); VIT		
PATHWAY CHC50113 Diploma of Early Childhood Education and Care (90 credit points towards Bachelor degree); or 5 years combined course length		

#1 IN VICTORIA & ★★★★★

FULL-TIME EMPLOYMENT

EDUCATION AND TRAINING

The Good Universities Guide, undergraduate level 2022

★★★★★ TEACHING QUALITY

EDUCATION AND TRAINING

The Good Universities Guide, postgraduate level 2022

GUARANTEED ATAR See definition on p 75.

^{FOL} This course is available through Federation Online - online.federation.edu.au

Bachelor of Education (Primary)

Learn how to engage children in innovative and purposeful learning. Along with the compulsory education courses, select primary specialisation from: Maths, Science, English and Inclusive Education with a focus on English, Science or Mathematics. You will complete a minimum of 80 days of supervised teaching practice during the four years of your degree and be qualified to teach primary students up to Year 6.

LOCATION Ballarat, Berwick, Gippsland	DURATION 4 years	GUARANTEED ATAR 70	APPLICATION VTAC / Direct
ENTRY REQUIREMENTS Units 1 and 2: satisfactory completion in two units (any study combination) of Maths: General Mathematics, Maths: Mathematical Methods or Maths: Specialist Mathematics or Units 3 and 4: any Mathematics; Units 3 and 4: a study score of at least 30 in English (EAL) or at least 25 in English other than EAL.		ENTRY REQUIREMENTS (NON-YEAR 12) Higher Education, VET and/or Work/Life Experience. Literacy & Numeracy test required if VCE benchmarks not met.	
		ESSENTIAL REQUIREMENTS Altus Suite online test. Working with Children Check, Police Check optional. See study.federation.edu.au	
PROFESSIONAL RECOGNITION Victorian Institute of Teaching (VIT)			

Bachelor of Education Studies

If you did not meet the entry requirements to commence a teaching degree, this course is for you. At the completion of first year, you may be eligible to apply for a transfer into the second year of a Federation teaching degree. This means that you may still qualify as a VIT registered teacher within 4 years of study. Otherwise continue this course and qualify to work in many roles as an Education Officer, Project Officer or Education Support Officer (Integration Aide) working to support students within a school setting.

LOCATION Ballarat, Berwick, Gippsland	DURATION 3 years	GUARANTEED ATAR 50	APPLICATION VTAC / Direct
ENTRY REQUIREMENTS Units 1 and 2: satisfactory completion in two units (any study combination) of any Mathematics or Units 3 and 4: any Mathematics; Units 3 and 4: a study score of at least 20 in any English.			
ENTRY REQUIREMENTS (NON-YEAR 12) Higher Education, VET and/or Work/Life Experience. Literacy & Numeracy test required if VCE benchmarks not met.		ESSENTIAL REQUIREMENTS Working with Children Check, Police Check optional. See study.federation.edu.au	
VIT APPROVED PATHWAY TO Initial Teacher Education programs			

Bachelor of Secondary Education

Prepare for a rewarding career as a secondary school teacher with the flexibility to teach from Year 7 through to VCE. We'll help you become an engaging, motivating and innovative secondary school teacher. You'll choose two specialisations from a range of teaching areas that will develop your content knowledge needed to successfully teach in those areas. You'll be ready to teach by undertaking a minimum of 80 days of supervised teaching placement throughout the course.

LOCATION Ballarat, Berwick, Gippsland	DURATION 4 years	GUARANTEED ATAR 70	APPLICATION VTAC / Direct
ENTRY REQUIREMENTS Units 1 and 2: satisfactory completion in two units (any study combination) of Maths: General Mathematics, Maths: Mathematical Methods or Maths: Specialist Mathematics or Units 3 and 4: any Mathematics; Units 3 and 4: a study score of at least 30 in English (EAL) or at least 25 in English other than EAL.			
ENTRY REQUIREMENTS (NON-YEAR 12) Higher Education, VET and/or Work/Life Experience. Literacy & Numeracy test required if VCE benchmarks not met.			
ESSENTIAL REQUIREMENTS Altus Suite online test. Working with Children Check, Police Check optional. See study.federation.edu.au			
PROFESSIONAL RECOGNITION Victorian Institute of Teaching (VIT)			

Bachelor of Secondary Education (Applied Teaching)

This stream provides opportunities for trade and vocationally qualified practitioners with industry experience to qualify as teachers in secondary schools and in the new Victorian Vocational Major Education. This allows secondary students to gain practical skills and qualifications in a specific industry while contributing towards the completion of their senior secondary certificate.

LOCATION Ballarat, Berwick, Gippsland, Online		
DURATION 4 years	GUARANTEED ATAR 70	APPLICATION VTAC / Direct
ENTRY REQUIREMENTS Units 3 and 4: a study score of at least 25 in English or at least 30 for English (EAL).		
ENTRY REQUIREMENTS (NON-YEAR 12) An approved trade or vocation and at least 6 year relevant experience.		
ESSENTIAL REQUIREMENTS Altus Suite online test. Working with Children Check, Police Check optional. See study.federation.edu.au		

Graduate Certificate in Education (Tertiary Education)

Gain contemporary learning and teaching practices to complement your industry and/or research expertise. The intended learning outcomes of the GCETE are framed within the seven criteria of the Australian University Teaching Criteria and Standards Framework. The content provides a foundation on which to develop quality pedagogies, in a range of tertiary teaching environments, supported by evidence, research and scholarly practice.

LOCATION Online	DURATION 0.5 year	ATAR Not required	APPLICATION Direct
ENTRY REQUIREMENTS (NON-YEAR 12) Bachelor's degree or equivalent tertiary teaching experience. See study.federation.edu.au			

Graduate Certificate in Specialist Teaching

Choose from the following majors: Inclusive Education, Literacy, Mathematics Education, Science Education, TESOL, Early Intervention and Learning Intervention. On completion, you may choose to pathway to our Master of Specialist Teaching. This course runs part-time, 2 units per semester, over 1 year (equivalent to a .5 year full-time study load of 60 credit points).

LOCATION Online	DURATION 1 year part-time	ATAR Not required	APPLICATION Direct
ENTRY REQUIREMENTS Successful completion of an Initial Teacher Education degree with eligibility for Victorian Institute of Teaching (VIT) registration. See study.federation.edu.au			
ESSENTIAL REQUIREMENTS See study.federation.edu.au			

Graduate Diploma of Education Studies

This course explores teaching and learning in local and global contexts, the purpose of education, feedback, assessment and reporting, and the examination of how children and young people's learning can be supported in diverse learning settings. Also available as a graduate certificate (half year online only).

LOCATION Ballarat, Online	DURATION 1 year	ATAR Not required	APPLICATION Direct
ENTRY REQUIREMENTS Bachelor's degree. See study.federation.edu.au		ESSENTIAL REQUIREMENTS See study.federation.edu.au	

GUARANTEED ATAR See definition on p 75.

*Proposed course only. Subject to Federation's course accreditation processes.

Master of Education Studies (Course Work)

Build on your strengths and experience for organisations where educational practices play a key role. Engage in contemporary debates and explore developments in your interest areas in order to lead educational practice, policy and research. Choose to complete the course via coursework or a combination of coursework and research.

LOCATION	DURATION	ATAR	APPLICATION
Online	2 years	Not required	Direct
ENTRY REQUIREMENTS		ESSENTIAL REQUIREMENTS	
Bachelor's degree. See study.federation.edu.au		See study.federation.edu.au	

Master of Specialist Teaching

Qualified teachers, those teaching 'out-of-field' or teachers looking to gain new specialist knowledge can increase their skills in specialist teaching areas. Build competency in cross-curricular areas of Numeracy, Literacy, STEM, TESOL, Inclusive Education, Early Intervention and Learning Intervention. After studying four specialist units you will complete one specialist stream. This course runs part-time, 2 units per semester, over 3 years. If students wish to complete the degree within 2 years, they can switch from part-time to full-time in their second year, with programme coordinator's approval. The overall programme equivalent to a 1.5 year full-time study load (180 credit points).

LOCATION	DURATION	ATAR	APPLICATION
Online	3 years part-time	Not required	Direct
ENTRY REQUIREMENTS			
Successful completion of an Initial Teacher Education degree with eligibility for Victorian Institute of Teaching (VIT) registration. See study.federation.edu.au			
ESSENTIAL REQUIREMENTS			
See study.federation.edu.au			

Master of Teaching (Early Childhood)

Build on your undergraduate degree to become a confident kindergarten teacher. If you're thinking of changing careers, now is a great time. Early childhood teachers are in high demand and a number of scholarships are available.

LOCATION	DURATION	ATAR	APPLICATION
Ballarat, Online	2 years	Not required	VTAC / Direct
ENTRY REQUIREMENTS (NON-YEAR 12)			
Bachelor's degree. See study.federation.edu.au			
ESSENTIAL REQUIREMENTS			
Working with Children Check, Police Check. See study.federation.edu.au			

Master of Teaching (Primary)

This postgraduate course will help you take your skills from your undergraduate degree to become a teacher. You may be looking to change your career or you've decided after finishing your undergraduate degree, that teaching is what you really want to do. You'll graduate from this degree with the confidence and skills to teach in primary schools across Australia and overseas. It's a hands-on course that gets you out into the classroom for a minimum of 60 days, where you can put what you've learnt into practice.

LOCATION	DURATION	ATAR	APPLICATION
Ballarat, Online	2 years accelerated	Not required	VTAC / Direct
ENTRY REQUIREMENTS (NON-YEAR 12)			
Bachelor's degree. See study.federation.edu.au			
ESSENTIAL REQUIREMENTS			
Working with Children Check, Police Check. See study.federation.edu.au			
PROFESSIONAL RECOGNITION			
Victorian Institute of Teaching (VIT)			

Master of Teaching (Secondary)

Develop the skills, understandings and dispositions for effective teaching. This coursework is linked to the Australian Graduate Teaching Standards and provides you with regular classroom observations, practitioner inquiries linked to personal goals, regular opportunities to develop core teaching practices, and the support of professional learning communities. Our course is small and people-centred, providing the ideal learning environment to become a teacher equipped to make a difference.

LOCATION	DURATION	ATAR	APPLICATION
Ballarat, Online	2 years accelerated	Not required	Direct
ENTRY REQUIREMENTS (NON-YEAR 12)			
Bachelor's degree. See study.federation.edu.au			
ESSENTIAL REQUIREMENTS			
Working with Children Check, Police Check. See study.federation.edu.au			
PROFESSIONAL RECOGNITION			
Victorian Institute of Teaching (VIT)			



Alison Clark is living proof there are many pathways to university study.

Her journey began with an education diploma from another TAFE provider and after further encouragement she commenced a Bachelor of Education (Early Childhood and Primary) at Federation.

Juggling a high study load with placements, and caring for young children, a supportive lecturer encouraged her to re-assess her study load.

"Once I dropped a unit and continued with three, it made such a difference in my life. I was able to be a mum and a student and a teacher - and still love what I was studying. Federation has amazing teachers, absolutely amazing," she said.

Alison gained experience with the Lighthouse Christian College kindergarten before graduating. Her dream is to work with the Indigenous community - but is keeping her options open.

Alison Clark

Bachelor of Education (Early Childhood and Primary)

Engineering & Renewable Energy



Certificate II in Engineering Studies

Gain foundation skills in engineering areas such as basic machining, fabrication and the use of power tools. This will make you more competitive when seeking an apprenticeship.

NATIONAL COURSE CODE 22470VIC	FREE TAFE Yes	LOCATION Ballarat (SMB)
STUDY TYPE Pre-apprenticeship	DURATION 16 weeks	CONTACT PER WEEK 3 days
ENTRY REQUIREMENTS Language, literacy and numeracy assessment and Pre-training review. Basic computer skills.		

Certificate III in Engineering - Fabrication Trade

Gain the skills to work in the metals and engineering industry, making and repairing metal/steel structures and products.

NATIONAL COURSE CODE MEM30319	FREE TAFE No	LOCATION Ballarat (SMB), Wimmera
STUDY TYPE Apprenticeship	DURATION 4 years	CONTACT PER WEEK 3 days during on-campus blocks
ENTRY REQUIREMENTS Language, literacy and numeracy assessment and Pre-training review.		

Certificate III in Engineering - Mechanical Trade

Start a career as a mechanical tradesperson with the Certificate III in Engineering – Mechanical Trade apprenticeship course.

NATIONAL COURSE CODE MEM30219	FREE TAFE No	LOCATION Ballarat (SMB)
STUDY TYPE Apprenticeship	DURATION 4 years	CONTACT PER WEEK 3 days during on-campus blocks
ENTRY REQUIREMENTS Language, literacy and numeracy assessment and Pre-training review.		

Certificate III in Engineering - Composite Trades

Gain the skills required of a composites tradesperson within the metal, engineering, manufacturing and associated industries.

NATIONAL COURSE CODE MEM31119	FREE TAFE No	LOCATION Ballarat
STUDY TYPE Apprenticeship	DURATION 4 years	CONTACT PER WEEK 3 days during on-campus blocks
ENTRY REQUIREMENTS Language, literacy and numeracy assessment and Pre-training review.		

Certificate IV in Engineering Drafting

Learn to produce specialist engineering drawings to meet the needs of drafting in: mechanical and machine construction and maintenance, steel fabrication and other fabrication services and assembly, mechanical and electrical services, fluid power, piping assembly and civil design. Suitable for school leavers, mature students and those looking to build on their skills.

NATIONAL COURSE CODE MEM40422	FREE TAFE No	LOCATION Ballarat (SMB)
DURATION 1 year	CONTACT PER WEEK 3 days	
STUDY TYPE Study may include full-time, part-time, on-campus, flexible delivery, workshops, block mode and blended delivery.		
ENTRY REQUIREMENTS Language, literacy and numeracy assessment and Pre-training review.		

Diploma of Engineering - Technical

Become a highly skilled technician in turning energy into power and motion, whether it's for your future career in hydraulic power, robotics, ergonomics or even teaching these skills. If you'd like to further your studies, you'll have earned credits towards our Bachelor of Engineering degrees.

NATIONAL COURSE CODE MEM50222	FREE TAFE No	LOCATION Ballarat (SMB)
DURATION 1 year	CONTACT PER WEEK 16 hours	
STUDY TYPE Study may include full-time, part-time, on-campus, flexible delivery, workshops, block mode and blended delivery.		
ENTRY REQUIREMENTS Year 12 maths (any) or Certificate III in Engineering, or industrial experience. Language, literacy and numeracy assessment and Pre-training review.		
PATHWAY UNIT TO Bachelor of Engineering (Mining) (Honours); Bachelor of Engineering (Civil) (Honours); Bachelor of Engineering (Electrical and Information Engineering) (Honours); Bachelor of Engineering (Mechanical) (Honours); Bachelor of Engineering (Mechatronics and Robotics Engineering) (Honours). – (60 credit points each)		

Engineering



Diploma of Engineering (Higher Education)

Build a strong engineering foundation of knowledge with this pathway that is spread over two stages. This structure ensures you can enter the second year of the Bachelor of Engineering (Honours) with the skills and knowledge to succeed.

LOCATION Ballarat, Berwick	DURATION 1 year	GUARANTEED ATAR Not required
ENTRY REQUIREMENTS Units 3 and 4: a study score of at least 20 in any English or English (EAL).		ENTRY REQUIREMENTS (NON-YEAR 12) Higher Education, VET and/or Work/Life Experience.

Bachelor of Engineering (Civil) (Honours)

Learn to prevent flooding, design irrigation systems and build multistorey buildings to ensure structures are safe, economical and environmentally sound. Seek employment in government and private organisations, specialising in civil and building engineering.

LOCATION Ballarat, Berwick, Gippsland	DURATION 4 years	GUARANTEED ATAR 60	APPLICATION VTAC / Direct
ENTRY REQUIREMENTS Units 3 and 4: a study score of at least 20 in one of Maths: Mathematical Methods or Maths: Specialist Mathematics; Units 3 and 4: a study score of at least 20 in English.			
ENTRY REQUIREMENTS (NON-YEAR 12) Higher Education, VET and/or Work/Life Experience.		PROFESSIONAL RECOGNITION Professional Engineer, Engineers Australia	
PATHWAY MEM50222 Diploma of Engineering - Technical (60 credit points)			

Bachelor of Engineering (Electrical and Information Engineering) (Honours)

The degree covers key areas of the electrical, electronic and computer domains including programming, data science and artificial intelligence. Pursue a career in electrical engineering, renewable energy, power systems engineering and electronic systems.

LOCATION Ballarat, Berwick, Gippsland	DURATION 4 years	GUARANTEED ATAR 60	APPLICATION VTAC / Direct
ENTRY REQUIREMENTS Units 3 and 4: study score of at least 20 in one of Maths: Mathematical Methods, or Maths: Specialist Mathematics; Units 3 and 4: a study score of at least 20 in English.			
ENTRY REQUIREMENTS (NON-YEAR 12) Higher Education, VET and/or Work/Life Experience.		PROFESSIONAL RECOGNITION Professional Engineer, Engineers Australia	
PATHWAY MEM50222 Diploma of Engineering - Technical (60 credit points)			

Bachelor of Engineering (Mechanical) (Honours)

Become a professional engineer who is an expert in planning, design and management. Invent new products, design innovative machines and change the way humans interact with mechanics. Learn about electric circuits and machines, thermodynamics and industrial robots. In final year, pursue your interest area with your own unique engineering project.

LOCATION Ballarat, Berwick	DURATION 4 years	GUARANTEED ATAR 60	APPLICATION VTAC / Direct
ENTRY REQUIREMENTS Units 3 and 4: a study score of at least 20 in one of Maths: Mathematical Methods or Maths: Specialist Mathematics; Units 3 and 4: a study score of at least 20 in English.			
ENTRY REQUIREMENTS (NON-YEAR 12) Higher Education, VET and/or Work/Life Experience.		PROFESSIONAL RECOGNITION Professional Engineer, Engineers Australia	
PATHWAY MEM50222 Diploma of Engineering - Technical (60 credit points)			

#1 IN VICTORIA & ★★★★★

LEARNING RESOURCES

SKILLS DEVELOPMENT

★★★★★ LEARNER ENGAGEMENT

ENGINEERING AND TECHNOLOGY

The Good Universities Guide, undergraduate level 2022

#1 IN VICTORIA & ★★★★★

FULL-TIME EMPLOYMENT

MEDIAN GRADUATE INCOME ONE YEAR

OVERALL EDUCATIONAL EXPERIENCE

STUDENT SUPPORT

TEACHING QUALITY

ENGINEERING AND TECHNOLOGY

The Good Universities Guide, postgraduate level 2022

Bachelor of Engineering (Mining) (Honours)

Learn to mine in a sustainable and safe way, exploring mineral deposit evaluation and processing, underground production systems, mine power and services, surface mining operations and mine environment and safety. Launch your career in government and private organisations, mining companies and consulting firms.

LOCATION	DURATION	GUARANTEED ATAR	APPLICATION
Ballarat, Online	4 years	60	VTAC / Direct
ENTRY REQUIREMENTS			
Units 3 and 4: a study score of at least 20 in one of Maths: Mathematical Methods or Maths: Specialist Mathematics; Units 3 and 4: a study score of at least 20 in English.			
ENTRY REQUIREMENTS (NON-YEAR 12)		PROFESSIONAL RECOGNITION	
Higher Education, VET and/or Work/Life Experience.		Professional Engineer, Engineers Australia	
PATHWAY			
MEM50222 Diploma of Engineering - Technical (60 credit points)			

Bachelor of Engineering (Mechatronics and Robotics Engineering) (Honours)

Gain the skills necessary to plan, design and manage complex systems that integrate mechanical, electronic and computational elements of engineering. You will learn project-based skills in real world situations required for success in industry.

LOCATION	DURATION	GUARANTEED ATAR	APPLICATION
Online	4 years	60	VTAC / Direct
ENTRY REQUIREMENTS			
Units 3 and 4: a study score of at least 20 in one of Maths: Mathematical Methods or Maths: Specialist Mathematics; Units 3 and 4: a study score of at least 20 in English.			
ENTRY REQUIREMENTS (NON-YEAR 12)		PROFESSIONAL RECOGNITION	
Higher Education, VET and/or Work/Life Experience.		Professional Engineer, Engineers Australia	
PATHWAY			
MEM50222 Diploma of Engineering - Technical (60 credit points)			

Graduate Certificate in Community Energy and Micro-Grid

Learn about the complex nature of renewable energy sources, energy storage, community microgrids, emerging technologies and energy project management. This course will equip you with the knowledge and skills to progress your career in the energy sector.

LOCATION	DURATION	ATAR	APPLICATION
Ballarat, Online	1 year part-time	Not required	Direct
ENTRY REQUIREMENTS (NON-YEAR 12)		ESSENTIAL REQUIREMENTS	
Bachelor's degree. See study.federation.edu.au		See study.federation.edu.au	

Graduate Certificate in Maintenance Management

Gain knowledge in manufacturing processes, transport, power generation and industrial, commercial and civic building operations. Embrace leadership and management techniques, maintenance strategies and asset operations optimisation.

LOCATION	DURATION	ATAR	APPLICATION
Online	1 year part-time	Not required	Direct
ENTRY REQUIREMENTS (NON-YEAR 12)		PROFESSIONAL RECOGNITION	
Bachelor's degree. See study.federation.edu.au		Continuing Professional Development, Engineers Australia	

Graduate Certificate in Mining Operation Health and Safety

Covering mining systems and workplace health and safety, this course will prepare you to undertake professional or highly skilled work within the mining industry, such as consultancy, engineering and safety, or prepare you for further training.

LOCATION	DURATION	ATAR	APPLICATION
Ballarat, Online	0.5 FT/1 year PT	Not required	Direct
ENTRY REQUIREMENTS (NON-YEAR 12)		PROFESSIONAL RECOGNITION	
Bachelor's degree (Engineering, Science or equivalent).		See study.federation.edu.au	

Graduate Certificate in Reliability Engineering

Designed primarily for the graduate engineer and delivered online, this mathematically based course covers technical aspects of engineering, focusing on reliability and availability of systems. You will study quality control, design and data analysis, as well as designing reliability into safety critical systems.

LOCATION	DURATION	ATAR	APPLICATION
Online	1 year part-time	Not required	Direct
ENTRY REQUIREMENTS (NON-YEAR 12)		PROFESSIONAL RECOGNITION	
Bachelor's degree. See study.federation.edu.au		Continuing Professional Development, Engineers Australia	

Graduate Diploma of Engineering Maintenance Management

Gain knowledge in manufacturing processes, transport, power generation and industrial, commercial and civic building operations. Embrace leadership and management techniques, maintenance strategies and asset operations optimisation.

LOCATION	DURATION	ATAR	APPLICATION
Online	2 years part-time	Not required	Direct
ENTRY REQUIREMENTS (NON-YEAR 12)		ESSENTIAL REQUIREMENTS	
Bachelor's degree. See study.federation.edu.au		See study.federation.edu.au	
PROFESSIONAL RECOGNITION			
Continuing Professional Development, Engineers Australia			

Graduate Diploma of Mining

This course was created with the working engineer in mind. Study areas include engineering physics, modelling and change, mine surveying, production drilling and blasting, tunnelling and mine development.

LOCATION	DURATION	ATAR	APPLICATION
Ballarat, Online	2 years	Not required	Direct
ENTRY REQUIREMENTS (NON-YEAR 12)		ESSENTIAL REQUIREMENTS	
Bachelor's degree. See study.federation.edu.au		Additional Details Form. See study.federation.edu.au	

Master of Engineering Project Management

Gain skills in project execution and resource planning. Learn more about contracts and costing, business analysis and decision making, human and financial resources, risk and research methodology. You will also undertake independent research in your final year.

LOCATION	DURATION	ATAR	APPLICATION
Ballarat	2 years	Not required	Direct
ENTRY REQUIREMENTS (NON-YEAR 12)		ESSENTIAL REQUIREMENTS	
Bachelor's degree. See study.federation.edu.au		Additional Details Form. See study.federation.edu.au	
PROFESSIONAL RECOGNITION			
Australian Institute of Project Management			

Master of Engineering Technology (Civil Engineering)

Progress your career with studies in civil engineering. This professionally orientated course provides students with the knowledge and skills that are necessary to obtain employment as a professional engineer as well as gain membership to Engineers Australia.

LOCATION	DURATION	ATAR	APPLICATION
Ballarat	2 years	Not required	Direct
ENTRY REQUIREMENTS (NON-YEAR 12) Bachelor's degree. See study.federation.edu.au		ESSENTIAL REQUIREMENTS See study.federation.edu.au	
PROFESSIONAL RECOGNITION Engineers Australia			

Master of Engineering Technology (Mechanical Engineering)

Progress your career with advanced studies in mechanical engineering. This professionally orientated course provides students with the knowledge and skills that are necessary to obtain employment as a professional engineer as well as gain membership to Engineers Australia.

LOCATION	DURATION	ATAR	APPLICATION
Ballarat	2 years	Not required	Direct
ENTRY REQUIREMENTS (NON-YEAR 12) Bachelor's degree. See study.federation.edu.au		ESSENTIAL REQUIREMENTS See study.federation.edu.au	
PROFESSIONAL RECOGNITION Engineers Australia			

Master of Engineering Technology (Mechatronics and Industrial Automation)

This course provides a balance in knowledge and skills between the three key areas of mechanical, electrical and computer engineering, with a strong focus on project-based and multidisciplinary learning.

LOCATION	DURATION	ATAR	APPLICATION
Gippsland	2 years	Not required	Direct
ENTRY REQUIREMENTS (NON-YEAR 12) Bachelor's degree. See study.federation.edu.au		ESSENTIAL REQUIREMENTS Additional Details Form. See study.federation.edu.au	
PROFESSIONAL RECOGNITION Engineers Australia			

Master of Engineering Technology (Mining Engineering)

Progress your career with advanced studies in mining engineering. This professionally orientated course provides students with the knowledge and skills that are necessary to obtain employment as a professional engineer as well as gain membership to Engineers Australia.

LOCATION	DURATION	ATAR	APPLICATION
Ballarat, Online	2 years	Not required	Direct
ENTRY REQUIREMENTS (NON-YEAR 12) Bachelor's degree. See study.federation.edu.au		ESSENTIAL REQUIREMENTS Additional Details Form. See study.federation.edu.au	
PROFESSIONAL RECOGNITION Engineers Australia			

Master of Engineering Technology (Renewable Energy and Electrical Power Systems)

This course covers key areas of electrical circuits, signals and systems, energy conversion, power electronics, power systems, electrical power distribution and protection systems, control systems and renewable energy. Learn more about sensors, artificial perception, and the Internet of Things (IoT) in smart energy systems. In your final year, undertake your own independent research project, relevant to your area of specialisation.

LOCATION	DURATION	ATAR	APPLICATION
Ballarat	2 years	Not required	Direct
ENTRY REQUIREMENTS (NON-YEAR 12) Bachelor's degree. See study.federation.edu.au		ESSENTIAL REQUIREMENTS Additional Details Form. See study.federation.edu.au	
PROFESSIONAL RECOGNITION Engineers Australia			

Master of Maintenance and Reliability Engineering

Progress your career within the engineering industry and learn about terotechnology and lifecycle costs, risk engineering and reliability applications.

LOCATION	DURATION	ATAR	APPLICATION
Online	2 years	Not required	Direct
ENTRY REQUIREMENTS (NON-YEAR 12) Bachelor's degree. See study.federation.edu.au		ESSENTIAL REQUIREMENTS Additional Details Form. See study.federation.edu.au	
PROFESSIONAL RECOGNITION Engineers Australia			



Aiswarya aims to become a project manager in order to create meaningful projects for the community, and therefore chose to complete the Master in Engineering Project Management.

"I selected Federation University because they have amazing facilities. I enjoy studying on the campus that's surrounded by nature and I find the environment inspiring."

Aiswarya Sindhu
Master of Engineering Project Management

Food and Hospitality



Certificate III in Baking

Become an expert in the wide range of baked goods, from pastries to bread and cakes to cookies with our workplace and classroom based apprenticeship.

NATIONAL COURSE CODE FBP30521	FREE TAFE No	LOCATION Ballarat
STUDY TYPE Apprenticeship	DURATION 3 years	CONTACT PER WEEK 4 x 3 day blocks plus workplace training
ENTRY REQUIREMENTS Signed training contract with employer and apprentice (AAC). Language, literacy and numeracy assessment and Pre-training review.		

Certificate III in Bread Baking

Become an expert in the wide range of bread baking in our workplace and classroom based apprenticeship.

NATIONAL COURSE CODE FBP30421	FREE TAFE No	LOCATION Ballarat (SMB)
STUDY TYPE Apprenticeship	DURATION 3 years	CONTACT PER WEEK 7 x 3 day blocks
ENTRY REQUIREMENTS Signed training contract with employer and apprentice (AAC). Language, literacy and numeracy assessment and Pre-training review.		

Certificate III in Commercial Cookery

Learn how to prepare and present food, about dietary and cultural requirements, creating and costing menus, communicating well with your team and food safety. Open doors to become a chef.

NATIONAL COURSE CODE SIT30821	FREE TAFE Yes	LOCATION Ballarat (SMB)
DURATION 1.5 or 3 years	CONTACT PER WEEK On campus: 18 hours Apprenticeship: 3 hours	
STUDY TYPE Apprenticeship <i>or</i> Study may include full-time, part-time, on-campus, flexible delivery, workshops, block mode and blended delivery.		
ENTRY REQUIREMENTS Apprentices: Signed training contract with employer and apprentice (AAC). Language, literacy and numeracy assessment and Pre-training review.		

Certificate III in Food Processing (Brewing)

Choose from two streams: One is generalised to design a specific course for your food processing workplace. The second enhances your skills in the process of brewing.

NATIONAL COURSE CODE FBP30121	FREE TAFE No	LOCATION Ballarat/Workplace
DURATION 1 year	CONTACT PER WEEK Brewing - 4 hours over 36 weeks	
STUDY TYPE Study may include full-time, part-time, on-campus, flexible delivery, workshops, block mode and blended delivery.		
ENTRY REQUIREMENTS Language, literacy and numeracy assessment and Pre-training review.		

Starting as a VET in School student, and now an apprentice at the Shared Table in Buninyong, Peter was Highly Commended in the 2022 Golden Plate Awards.

"I'm super happy with how far I have come in my career. I wouldn't have achieved this without the support of my Federation TAFE trainers and my Head Chef. I see myself continuing in the industry and learning as much as I can, wherever I can."

Peter Dawson

Federation TAFE, Certificate III in Commercial Cookery

Certificate III in Hospitality

Learn practical skills like creating stand-out coffee, delivering exceptional customer service and handling food in the safest possible way.

NATIONAL COURSE CODE SIT30622	FREE TAFE Yes	LOCATION Ballarat (SMB)
STUDY TYPE Traineeship	DURATION 1 year	CONTACT PER WEEK 3 hours per week, plus workplace
ENTRY REQUIREMENTS Language, literacy and numeracy assessment and Pre-training review.		

Certificate IV in Artisan Fermented Products (Brewing)

Partnering with the Australian Craft Beer Centre of Excellence, and from our microbrewery classes, gain the skills to start a home-brew hobby, expand your passion to profession or become an expert brewer.

NATIONAL COURSE CODE FBP30121	FREE TAFE No	LOCATION Ballarat/Workplace	DURATION 1 year
CONTACT PER WEEK 4 hours over 36 weeks. 2 x 5 day workshops, 4 hours non-supervised assessments.			
STUDY TYPE Study may include full-time, part-time, on-campus, flexible delivery, workshops, block mode and blended delivery.			
ENTRY REQUIREMENTS Language, literacy and numeracy assessment and Pre-training review.			

Hair and Beauty



Certificate II in Salon Assistant

Learn the basics of applying colouring products, drying hair to shape and tools of the trade, as well as starting to develop your customer service skills. At the end of this course, you will be ready to apply for hairdressing apprentice positions, or be prepared to step straight into the workforce as a salon assistant.

NATIONAL COURSE CODE SHB20216	FREE TAFE Yes	LOCATION Ballarat (SMB)
STUDY TYPE Pre-apprenticeship	DURATION 5 months	CONTACT PER WEEK 2 days
ENTRY REQUIREMENTS Language, literacy and numeracy assessment and Pre-training review.		

Certificate III in Beauty Services

This qualification reflects the role of individuals employed as beauticians to provide a range of beauty services including nail, waxing, lash and brow, and basic make-up services.

NATIONAL COURSE CODE SHB30121	FREE TAFE No	LOCATION Ballarat (SMB)
DURATION 9 months part-time	CONTACT PER WEEK 2-3 days	
STUDY TYPE Study may include full-time, part-time, on-campus, flexible delivery, workshops, block mode and blended delivery.		
ENTRY REQUIREMENTS Language, literacy and numeracy assessment and Pre-training review.		

Certificate III in Hairdressing

Earn money while you study our certificate and complete your apprenticeship alongside it, or you can treat our course as an authentic alternative to an apprenticeship. Whichever option you choose, you'll be mentored by masters of the craft in real salon environments.

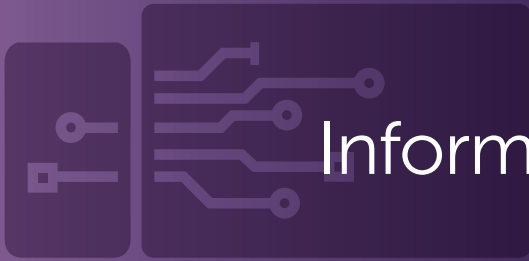
NATIONAL COURSE CODE SHB30416	FREE TAFE No	LOCATION Ballarat (SMB)
DURATION 18 months <i>or</i> 3 years	CONTACT PER WEEK 21 hours	
STUDY TYPE Apprenticeship <i>or</i> Study may include full-time, part-time, on-campus, flexible delivery, workshops, block mode and blended delivery.		
ENTRY REQUIREMENTS Signed training contract with employer and apprentice (AAC). Language, literacy and numeracy assessment and Pre-training review.		

Diploma of Beauty Therapy

Learn a broad range of beauty therapy treatments and services which may include facial massage, body massage, hair removal, spa treatments, lash and brow treatments, nail technology services, make-up, aromatherapy, providing advice on beauty treatments and services, selling retail skin care and cosmetic products and coordinating a work team.

NATIONAL COURSE CODE SHB50121	FREE TAFE No	LOCATION Ballarat (SMB)
DURATION 1 year full-time / 1.5 years part-time	CONTACT PER WEEK 4 days full-time or 2 days part-time	
STUDY TYPE Study may include full-time, part-time, on-campus, flexible delivery, workshops, block mode and blended delivery.		
ENTRY REQUIREMENTS Age restrictions apply to some course units (18 and over). Alternative units for 16-18y/o. Language, literacy and numeracy assessment and Pre-training review.		





Information Technology

Certificate IV in Cyber Security

Cyber security is one of the fastest growing areas in Australia's Information Technology industry. Develop your communication skills, with units that will help you to communicate confidently and effectively in the workplace.

NATIONAL COURSE CODE	FREE TAFE	LOCATION	DURATION	CONTACT PER WEEK
22603VIC	Yes	Ballarat	36 weeks	3 days
STUDY TYPE Study may include full-time, part-time, on-campus, flexible delivery, workshops, block mode and blended delivery.				
ENTRY REQUIREMENTS Interview, Language, literacy and numeracy assessment and Pre-training review.				

Diploma of Information Technology

Gain fundamental skills required for the Information Technology industry in different careers such web design and multimedia, networking, core programming, databases, and software testing.

NATIONAL COURSE CODE	FREE TAFE	LOCATION	DURATION	CONTACT PER WEEK
ICT50220	No	Ballarat	1 year part-time	3.5 days
STUDY TYPE Traineeship with IBM. Study may include full-time, part-time, on-campus, flexible delivery, workshops, block mode and blended delivery.				
ENTRY REQUIREMENTS Interview, Language, literacy and numeracy assessment and Pre-training review.				
PATHWAY TO Bachelor of Information Technology (120 credit points); Bachelor of Information Technology (Big Data and Analytics) (120 credit points); Bachelor of Information Technology (Business Information Systems) (120 credit points); Bachelor of Information Technology (Networking and Security) (120 credit points); Bachelor of Information Technology (Software Development) (120 credit points); Bachelor of Information Technology (Professional Practice) (60 credit points).				

Diploma of Information Technology (Higher Education)

Build a strong Information Technology foundation and pathway that is spread over two stages. This structure ensures you can enter the second year of the Bachelor of Information Technology.

LOCATION	DURATION	GUARANTEED ATAR	APPLICATION
Ballarat, Berwick	1 year	Not required	Direct
ENTRY REQUIREMENTS Units 3 and 4: a study score of at least 20 in any English or English (EAL).		ENTRY REQUIREMENTS (NON-YEAR 12) Higher Education, VET and/or Work/Life Experience.	



Bachelor of Information Technology

Develop strong communication, academic and problem solving skills – critical attributes for success in the IT sector. Learn programming skills to facilitate smooth communication with software developers, and explore web design, systems modelling and user experience. Participate in our professional engagement course for the opportunity to network and enhance your knowledge of the IT industry.

LOCATION Ballarat, Berwick, Gippsland, Online	DURATION 3 years	GUARANTEED ATAR 50	APPLICATION VTAC / Direct
ENTRY REQUIREMENTS Units 3 and 4: a study score of at least 20 in any English.			
ENTRY REQUIREMENTS (NON-YEAR 12) Higher Education, VET and/or Work/Life Experience.		PROFESSIONAL RECOGNITION Australian Computer Society (ACS)	
PATHWAY ICT50220 Diploma of Information Technology and Diploma of Information Technology (Higher Education) (120 credit points towards Bachelor degree; or 3 years combined course length)			

Bachelor of Information Technology (Big Data and Analytics)

There is a real need for people who have the skills to identify, interpret and analyse trends from the collected data. Study areas such as information and data analysis, allowing you to discover and quantify patterns using statistics, statistical inference, regression analysis, and machine learning. Develop technical knowledge on a range of topics including statistics, statistical inference, high performance computing and visualisation.

LOCATION Ballarat, Berwick, Online	DURATION 3 years	GUARANTEED ATAR 50	APPLICATION VTAC / Direct
ENTRY REQUIREMENTS Units 3 and 4: a study score of at least 20 in any English.			
ENTRY REQUIREMENTS (NON-YEAR 12) Higher Education, VET and/or Work/Life Experience.		PROFESSIONAL RECOGNITION Australian Computer Society (ACS)	
PATHWAY ICT50220 Diploma of Information Technology (120 credit points towards Bachelor degree; or 3 years combined course length)			

#1 IN VICTORIA & ★★★★★
SKILLS DEVELOPMENT

★★★★★

LEARNER ENGAGEMENT

MEDIAN GRADUATE INCOME ONE YEAR

COMPUTING AND INFORMATION SYSTEMS

The Good Universities Guide, undergraduate level 2022

#1 IN VICTORIA & ★★★★★

LEARNER ENGAGEMENT

SKILLS DEVELOPMENT

COMPUTING AND INFORMATION SYSTEMS

The Good Universities Guide, postgraduate level 2022



Final year Bachelor of Information Technology students Kurt Horsley and Seth Leslie developed an interactive course to encourage positive sensations for people living with dementia. Located in the Woookarung Regional Park, the project uses QR codes placed close to life-like native animals that, when scanned, link to a website detailing the animals, their sounds and a story about Nanna Kookaburra.

“It’s been wonderful to work on a project where I can tackle technical challenges as well as write and narrate a fun interactive story that will have real benefits for people living with dementia,” said Seth.

“The project has helped me enhance my technical and non-technical skills while allowing me the chance to give back to the community in a positive way,” said Kurt.

The Adventure Trail experience involved partnerships with the Bigger Hearts Dementia Alliance, Parks Victoria and Virtual Bean web design.

Kurt Horsley
Bachelor of Information Technology
(Professional Practice)

Seth Leslie
Bachelor of Information Technology

Bachelor of Information Technology (Business Information Systems)

Harness technology to help organisations achieve a competitive advantage. Develop skills in business processes and study units in data and information management, enterprise systems and business intelligence. You’ll explore information security, multimedia, knowledge management, databases and emerging technologies in business.

LOCATION	DURATION	GUARANTEED ATAR	APPLICATION
Ballarat, Berwick, Online	3 years	50	VTAC / Direct
ENTRY REQUIREMENTS			
Units 3 and 4: a study score of at least 20 in any English.			
ENTRY REQUIREMENTS (NON-YEAR 12)		PROFESSIONAL RECOGNITION	
Higher Education, VET and/or Work/Life Experience.		Australian Computer Society (ACS)	
PATHWAY			
ICT50220 Diploma of Information Technology (120 credit points towards Bachelor degree; or 3 years combined course length)			

Bachelor of Information Technology (Networking and Security)

Investigate how security breaches occur, how private information is vulnerable and ways to protect it. Delve into networks, their protocols and hardware and investigate how these systems can be vulnerable to a malicious attack. Learn how to defend business, government and individual’s databases which hold sensitive data.

LOCATION	DURATION	GUARANTEED ATAR	APPLICATION
Ballarat, Berwick, Online	3 years	50	VTAC / Direct
ENTRY REQUIREMENTS			
Units 1 and 2: satisfactory completion in two units (any study combination) of Maths: General Mathematics, Maths: Mathematical Methods or Maths: Specialist Mathematics or Units 3 and 4: a study score of at least 20 in any Mathematics; Units 3 and 4: a study score of at least 20 in any English.			
ENTRY REQUIREMENTS (NON-YEAR 12)		PROFESSIONAL RECOGNITION	
Higher Education, VET and/or Work/Life Experience.		Australian Computer Society (ACS)	
PATHWAY			
ICT50220 Diploma of Information Technology (120 credit points towards Bachelor degree; or 3 years combined course length)			

GUARANTEED ATAR See definition on p 75

Bachelor of Information Technology (Software Development)

This degree gives you the opportunity to learn new programming languages, architecture, and paradigms to create new software applications. You will complete units in dynamic web development, data structures and algorithms and agile coding. Graduates may be involved in software release and post-release activities, including product launches, and implementation roles such as installation, configuration, programming/customisation, integration and data migration.

LOCATION	DURATION	GUARANTEED ATAR	APPLICATION
Ballarat, Berwick, Online	3 years	50	VTAC / Direct
ENTRY REQUIREMENTS			
Units 3 and 4: a study score of at least 20 in Maths: Mathematical Methods or at least 20 in Maths: Specialist Mathematics; Units 3 and 4: a study score of at least 20 in any English.			
ENTRY REQUIREMENTS (NON-YEAR 12)		PROFESSIONAL RECOGNITION	
Higher Education, VET and/or Work/Life Experience.		Australian Computer Society (ACS)	
PATHWAY			
ICT50220 Diploma of Information Technology (120 credit points towards Bachelor degree; or 3 years combined course length)			

Bachelor of Information Technology (Professional Practice)

Combine study and practical industry experience. Receive a paid vocational work experience placement of approximately \$47,000 (casual basis) over the final two years of this degree as you study and undertake 1600 hours of work integrated learning with IBM® and Kyndryl in Ballarat. Second and third year units are aligned with your agreed industry focus area in either software development, cloud or mainframe.

LOCATION	DURATION	ATAR	APPLICATION
Ballarat, Berwick	4 years	Required	VTAC / Direct
ENTRY REQUIREMENTS			
Prerequisites Units 1 and 2: satisfactory completion in two units (any study combination) of Maths: General Mathematics, Maths: Mathematical Methods or Maths: Specialist Mathematics or Units 3 and 4: any Mathematics; Units 3 and 4: a study score of at least 20 in any English.			
ENTRY REQUIREMENTS (NON-YEAR 12)		ESSENTIAL REQUIREMENTS	
Higher Education, VET and/or Work/Life Experience.		Interview. See study.federation.edu.au	
PROFESSIONAL RECOGNITION			
Australian Computer Society (ACS)			
PATHWAY			
ICT50220 Diploma of Information Technology (60 credit points towards Bachelor degree; or 4.5 years combined course length). ICT50915 Diploma of Digital Media Technologies (30 credit points),			

Master of Cognitive Enterprise

Examine key aspects of big data and analytics, supply chains, intelligent workflows, digital transformations and hybrid combinations of intelligent platforms; whilst also developing your analytical, leadership, communication and IT project management skills. In final year, work on an industry-led project and apply for a paid semester-long internship with IBM®. Also available as a graduate certificate and graduate diploma.

LOCATION	DURATION	ATAR	APPLICATION
Ballarat, Online	2 years	Not required	Direct
ENTRY REQUIREMENTS (NON-YEAR 12)		ESSENTIAL REQUIREMENTS	
Bachelor's degree. See study.federation.edu.au		See study.federation.edu.au	

Master of Applied Cyber Security

This course provides knowledge and skills in security science to produce skilled cyber security professionals for security administration and consultancy, incident analytics and response, and industry solution/architect development.

LOCATION	DURATION	ATAR	APPLICATION
Ballarat, Berwick, Online	2 years	Not required	Direct
ENTRY REQUIREMENTS (NON-YEAR 12)		ESSENTIAL REQUIREMENTS	
Bachelor's degree. See study.federation.edu.au		See study.federation.edu.au	

Master of Data Science

Obtain a comprehensive suite of tools required to manage, manipulate, analyse and visualise data coming from various sources such as science, business and society.

LOCATION	DURATION	ATAR	APPLICATION
Ballarat, Online	2 years	Not required	Direct
ENTRY REQUIREMENTS (NON-YEAR 12)		ESSENTIAL REQUIREMENTS	
Bachelor's degree. See study.federation.edu.au		See study.federation.edu.au	

Master of Technology (Enterprise Systems and Business Analytics)

Take your IT skills to the next level. The Master of Technology will give you a leg up in the IT industry. With this degree you will begin to understand how software contributes to the economic, technological, operational and strategic value in organisations and make recommendations for improvement.

LOCATION	DURATION	ATAR	APPLICATION
Ballarat, Online	2 years	Not required	Direct
ENTRY REQUIREMENTS (NON-YEAR 12)		ESSENTIAL REQUIREMENTS	
Bachelor's degree. See study.federation.edu.au		See study.federation.edu.au	

Master of Technology (Software Engineering)

Software is the backbone of all organisation's. You will learn the skills to implement advanced systems, integrate with existing systems all while maintaining a secure infrastructure to enhance the organisations internal capability.

LOCATION	DURATION	ATAR	APPLICATION
Ballarat, Online	2 years	Not required	Direct
ENTRY REQUIREMENTS (NON-YEAR 12)			
Bachelor's degree. See study.federation.edu.au			
ESSENTIAL REQUIREMENTS			
Applicants must provide evidence of successful completion of relevant higher education studies.			

Nursing, Midwifery and Paramedicine

Certificate III in Individual Support

Become an aged care/support worker, and learn the skills to provide aged, disability and other support to people in the community and/or residential settings. If your goal is to continue your studies, this course will give you a pathway with credit into our Diploma of Nursing.

NATIONAL COURSE CODE CHC33015	FREE TAFE Yes	LOCATION Ballarat, Wimmera
DURATION 0.5 – 1 year	CONTACT PER WEEK 2 days on-campus	
STUDY TYPE Traineeship or Study may include full-time, part-time, on-campus, flexible delivery, workshops, block mode and blended delivery.		
ENTRY REQUIREMENTS Language, literacy and numeracy assessment and Pre-training review. Working with Children Check, Police Check. Interview.		
PATHWAY TO HLT54121 Diploma of Nursing		

#1 IN AUSTRALIA & ★★★★★

TEACHING QUALITY

#1 VICTORIA & ★★★★★

STUDENT SUPPORT

LEARNING RESOURCES

★★★★★

OVERALL EDUCATIONAL EXPERIENCE

SKILLS DEVELOPMENT

NURSING

The Good Universities Guide, postgraduate level 2022

★★★★★

STUDENT SUPPORT

NURSING

The Good Universities Guide, undergraduate level 2022

After completing the Diploma of Nursing at Federation TAFE Horsham, mother of three Stacey Krahe commenced work in aged and acute care at Warracknabeal hospital.

“I wanted to give back to other people – that’s my main drive for nursing,” she explained.

Just 40 minutes away, it was easy for Stacey to attend practical sessions in the classroom at the Wimmera Campus.

“It’s set up like a normal hospital so when you’re in the prac room, it feels like real nursing which is exciting!” she said.

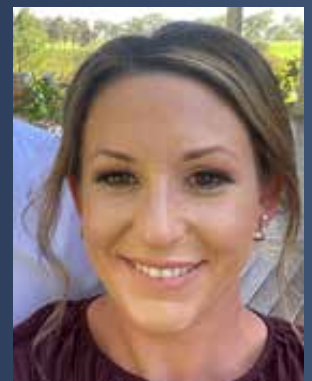
The practical, hands-on experience was immensely beneficial to Stacey. The built-in placements provided different experiences which allowed her to discover acute nursing.

The two-year course was less confronting than a three-year bachelor, although Stacey is now looking forward to continuing her nursing pathway to a bachelor’s degree.

“The Diploma of Nursing was a nice stepping-stone. Horsham TAFE is fantastic, the staff are great, the teachers are amazing, more than willing to help and give useful feedback,” she said.

“I’ve absolutely loved it, even though I was really worried about studying again. But you make that decision to commit and it just happens.”

Stacey Krahe
Federation TAFE,
Diploma of
Nursing



Diploma of Nursing

Gain the competencies, skills and knowledge for registration as an Enrolled Nurse with the Australian Health Practitioner Registration Authority (AHPRA). Studies include health information, nursing care plans, wound management, administer and monitor medications. On completion, you will work under the direct or indirect supervision of Registered Nurses.

NATIONAL COURSE CODE HLT54121	FREE TAFE Yes	LOCATION Ballarat, Wimmera
DURATION 2 years	CONTACT PER WEEK 3 days on campus	
STUDY TYPE Traineeship <i>or</i> Study may include full-time, part-time, on-campus, flexible delivery, workshops, block mode and blended delivery.		
ENTRY REQUIREMENTS Language, literacy and numeracy assessment and Pre-training review. Working with Children Check, Police Check. Interview.		
PATHWAY TO Bachelor of Nursing (120 credit points)		

Bachelor of Nursing

Deliver the highest quality care to improve your patients' outcomes. Learn to work with diverse communities, mental health, medical and surgical nursing and palliative care. You may choose to work in emergency illness, mental health, long-term care, intercultural health or population health.

LOCATION Ballarat, ^{BLD} Ballarat, Berwick, ^{BLD} Berwick, Gippsland, ^{BLD} Gippsland, ^{BLD} East Gippsland, ^{BLD} (Wonthaggi)		
DURATION 3 years	GUARANTEED ATAR 70	APPLICATION VTAC / Direct
ENTRY REQUIREMENTS Units 3 and 4: a study score of at least 25 in any English.		
ENTRY REQUIREMENTS (NON-YEAR 12) Higher Education, VET and/or Work/Life Experience.		
ESSENTIAL REQUIREMENTS English language proficiency. Working with Children Check, Police record check. See study.federation.edu.au		
PROFESSIONAL RECOGNITION Australian Nursing and Midwifery Accreditation Council (ANMAC), Australian Health Practitioner Registration Authority (AHPRA), Nursing and Midwifery Board of Australia (NMBA)		
PATHWAY HLT54121 Diploma of Nursing (120 credit points towards Bachelor degree); or 4 years combined course length		

Bachelor of Nursing/Bachelor of Midwifery

The combined degree aims to provide graduates with a blend of knowledge, skill and behaviours to work in general nursing and midwifery practice settings. You will develop skills in communication, research, problem solving and critical thinking required in healthcare settings.

LOCATION ^{BLD} Ballarat, ^{BLD} Gippsland	DURATION 4 years	GUARANTEED ATAR 75	APPLICATION VTAC / Direct
ENTRY REQUIREMENTS Units 3 and 4: a study score of at least 25 in any English.			
ENTRY REQUIREMENTS (NON-YEAR 12) Higher Education, VET and/or Work/Life Experience.			
ESSENTIAL REQUIREMENTS English language proficiency. Working with Children Check, Police Check. See study.federation.edu.au			
PROFESSIONAL RECOGNITION Australian Nursing and Midwifery Accreditation Council (ANMAC).			

GUARANTEED ATAR See definition on p 75

^{BLD} Blended delivery is a combination of online and on campus classes.

^{FOL} This course is available through Federation Online - online.federation.edu.au

Bachelor of Nursing (Honours)

Governments and communities demand evidence-based healthcare practice, as health policies impact the way services are delivered to the community. As the largest group of healthcare providers, nurses are central to the implementation of new, evidence-based practices. The Honours year primarily involves an independent research project conducted under supervision of an expert academic.

LOCATION Ballarat, Online	DURATION 1 year	APPLICATION Direct
ENTRY REQUIREMENTS (NON-YEAR 12) See study.federation.edu.au		ESSENTIAL REQUIREMENTS See study.federation.edu.au

Graduate Certificate in Health

Choose from over 20 electives in a wide range of areas including mental health, public health, work place health and safety as well as health leadership. This course has been designed to suit the needs of individuals as there are no core units offered - your study journey is completely your choice.

LOCATION Online, ^{FOL} Federation Online	DURATION 1 year part-time	ATAR Not required	APPLICATION Direct
ENTRY REQUIREMENTS (NON-YEAR 12) Bachelor's degree. See study.federation.edu.au		ESSENTIAL REQUIREMENTS See study.federation.edu.au	

Graduate Certificate in Health (Emergency Nursing)

Together with structured work-integrated learning as part of your employment, this course addresses the current specialised nursing workforce and skills shortage; examining emergency patient care and emergency nursing practice.

LOCATION ^{FOL} Federation Online	DURATION 1 year part-time	ATAR Not required	APPLICATION Direct
ENTRY REQUIREMENTS (NON-YEAR 12) Bachelor's degree. See study.federation.edu.au		ESSENTIAL REQUIREMENTS See study.federation.edu.au	



Graduate Certificate in Health (Gerontology)

This course addresses the current demand for education and workforce needs in caring for the elderly; examining pathophysiology and pharmacology, normal ageing as well as comprehensive assessments.

LOCATION Online	DURATION 1 year part-time	ATAR Not required	APPLICATION Direct
ENTRY REQUIREMENTS (NON-YEAR 12) Bachelor's degree. See study.federation.edu.au		ESSENTIAL REQUIREMENTS See study.federation.edu.au	

Graduate Certificate in Health (Intensive Care Nursing)

Together with structured work-integrated learning, this course addresses the specialised nursing workforce and skills shortage; examining critical patient care.

LOCATION FOL Federation Online	DURATION 1 year part-time	ATAR Not required	APPLICATION Direct
ENTRY REQUIREMENTS (NON-YEAR 12) Bachelor's degree. See study.federation.edu.au		ESSENTIAL REQUIREMENTS See study.federation.edu.au	

Graduate Certificate in Health (Peri-operative Nursing)

For registered nurses in an associated clinical area, this course builds technical skills designed to strengthen critical thinking, guide the development of hands-on abilities and reinforce the importance of communication within the wider team in providing safe, quality care for pre, intra and post-operative patients.

LOCATION FOL Federation Online	DURATION 1 year part-time	ATAR Not required	APPLICATION Direct
ENTRY REQUIREMENTS (NON-YEAR 12) Bachelor's degree. See study.federation.edu.au		ESSENTIAL REQUIREMENTS See study.federation.edu.au	

Graduate Diploma of Midwifery

An innovative course with a strong regional focus. Develop critical thinking skills as well as theoretical and practical knowledge, necessary to practice midwifery in a multidisciplinary context and in a variety of settings. Also available as a graduate certificate.

LOCATION Ballarat, Gippsland	DURATION 1 year	ATAR Not required	APPLICATION Direct
ENTRY REQUIREMENTS (NON-YEAR 12) Bachelor's degree. See study.federation.edu.au			
ESSENTIAL REQUIREMENTS Working with Children Check, Police Check. See study.federation.edu.au			
PROFESSIONAL RECOGNITION Australian Health Practitioner Regulation Agency (AHPRA), Nursing and Midwifery Board of Australia			

Graduate Certificate in Paramedicine (Re-entry)

This course is designed to allow applicants who have previously completed an entry to practice course in Paramedicine to be registered without having to complete the full qualification again. Also designed for paramedics who have had time away from the profession and no longer have recency of practice.

LOCATION Ballarat, FLEX Ballarat	DURATION 1 year part-time	ATAR Not required	APPLICATION Direct
ENTRY REQUIREMENTS (NON-YEAR 12) Bachelor's degree. See study.federation.edu.au		ESSENTIAL REQUIREMENTS Police Check. See study.federation.edu.au	

Graduate Diploma of Paramedicine

Transition into paramedicine from nursing, and help care for those suffering a health crisis. Upon graduation, apply for Graduate Entry Programs within Ambulance Victoria (AV) and Private Patient Transport Services. Graduates will also meet the requirements for employment with other pre-hospital and ambulance service employers throughout Australia, New Zealand and the United Kingdom (UK).

LOCATION Ballarat	DURATION 1 year	ATAR Not required	APPLICATION Direct
ENTRY REQUIREMENTS (NON-YEAR 12) Bachelor's degree. See study.federation.edu.au		ESSENTIAL REQUIREMENTS Police Check. See study.federation.edu.au	
PROFESSIONAL RECOGNITION Ambulance Victoria, Full accreditation with the Australasian Council of Ambulance Authorities			

Master of Health (Advanced Nursing)

Prepare with advanced practice knowledge for roles in leadership, management and education. Also available as a graduate diploma and graduate certificate.

LOCATION FOL Federation Online	DURATION 2 years	ATAR Not required	APPLICATION Direct
ENTRY REQUIREMENTS (NON-YEAR 12) Bachelor's degree. See study.federation.edu.au		ESSENTIAL REQUIREMENTS See study.federation.edu.au	

Master of Health (Child and Family Health)

This course prepares registered nurses with midwifery qualifications for advanced practice in maternal and child health nursing. Complete a clinical placement component of 300 hours, and gain advanced skills to work with children from birth to school age and families. Also available as a graduate diploma.

LOCATION FLEX Berwick	DURATION 2 years	ATAR Not required	APPLICATION Direct
ENTRY REQUIREMENTS (NON-YEAR 12) Nursing/Midwifery degree and current AHPRA registration for both. Bachelor's degree. See study.federation.edu.au			

Master of Health (Health Leadership)

Explore leadership action through work-integrated learning experiences, to assist in client health and service delivery excellence. Also available as a graduate certificate and graduate diploma.

LOCATION Online	DURATION 2 years	ATAR Not required	APPLICATION Direct
ENTRY REQUIREMENTS (NON-YEAR 12) See study.federation.edu.au		ESSENTIAL REQUIREMENTS See study.federation.edu.au	

Master of Health (Mental Health Nursing)

Successful nursing graduates can develop a deep understanding of the theory and clinical practice relationship. Gain advanced level skills and knowledge for application in the mental health community, leading to clinical career progression. This course is also available as a graduate diploma and graduate certificate.

LOCATION Online	DURATION 2 years	ATAR Not required	APPLICATION Direct
ENTRY REQUIREMENTS (NON-YEAR 12) Bachelor's degree. See study.federation.edu.au			

FLEX Flexible delivery is a blend of online study with regular, scheduled on-campus classes.

FOL This course is available through Federation Online - online.federation.edu.au



Master of Health (Neonatal Care)

This course prepares registered nurses and midwives to work in a Special Care Nursery. A clinical placement component of 80 hours is included. Also available as a graduate certificate and diploma.

LOCATION	DURATION	ATAR	APPLICATION
FLEX Ballarat, FLEX Gippsland	2 years	Not required	Direct
ENTRY REQUIREMENTS (NON-YEAR 12) Bachelor's degree. See study.federation.edu.au		ESSENTIAL REQUIREMENTS See study.federation.edu.au	

Master of Health (Perinatal and Infant Mental Health)

Understand, educate and support families experiencing mental health difficulties within the first 12 months following childbirth. A clinical placement component of 80 hours is included. Also available as a graduate diploma and graduate certificate.

LOCATION	DURATION	ATAR	APPLICATION
FLEX Ballarat	2 years	Not required	Direct
ENTRY REQUIREMENTS (NON-YEAR 12) Bachelor's degree. See study.federation.edu.au			

Master of Health (Research Practice)

Develop critical thinking and research skills that are highly sought after in a competitive employment environment. Also available as a graduate diploma and graduate certificate.

LOCATION	DURATION	ATAR	APPLICATION
Online	2 years	Not required	Direct
ENTRY REQUIREMENTS (NON-YEAR 12) See study.federation.edu.au		ESSENTIAL REQUIREMENTS See study.federation.edu.au	

Master of Nursing (Nurse Practitioner)

The course builds advanced clinical practice research and leadership skills to inform real-world practice. It is designed specifically for students working clinically and studying simultaneously.

LOCATION	DURATION	ATAR	APPLICATION
Online	1.5 years	Not required	Direct
ENTRY REQUIREMENTS (NON-YEAR 12) Bachelor's degree. See study.federation.edu.au			

Completing the Graduate Diploma of Health (Child and Family Health Nursing) has been a positive experience for Wendy McGowan.

Federation's top-class facilities, small class sizes along with reasonable travel, parking and course costs were key factors in her decision to study at Berwick. Virtual classes also meant travel time was reduced.

External speakers added to Wendy's knowledge, covering areas such as oral health, Children's Court and enhanced maternal health, along with a series of valuable work placements.

Pushing herself out of her comfort zone to further her career was a highlight.

"Receiving a letter of commendation from the Dean for first semester achievements was a very proud moment for me and made all my hard work worth it," she recalled.

Wendy McGowan

Graduate Diploma of Health (Child and Family Health Nursing)

Performing Arts, Visual Arts

Home to our unique Arts Academy, a purpose-built centre for performing and visual arts, Camp Street Campus encourages and facilitates creativity of all kinds, and plays an important role in Ballarat's thriving arts and culture scene.

Our Gippsland Centre for Art and Design also provides a dynamic environment for emerging Australian artists.

Bachelor of Visual Arts

You will develop the skills to create your own future in the diverse creative industries. Our Arts Academy has specialised facilities for you to work in ceramics, drawing, printmaking, photography and painting. You will also explore your studio-based practice through workshops of experimentation and self-discovery. All intensive teaching staff are practicing artists and designers with outstanding reputations both in Australia and internationally.

LOCATION Ballarat	DURATION 3 years	ATAR Required	APPLICATION VTAC / Direct
ENTRY REQUIREMENTS Units 3 and 4: a study score of at least 20 in any English.		ESSENTIAL REQUIREMENTS Interview and folio. See study.federation.edu.au	
ENTRY REQUIREMENTS (NON-YEAR 12) Higher Education, VET and/or Work/Life Experience.			
PATHWAY CUA50720 Diploma of Graphic Design (30 credit points)			

Federation's flexible learning options helped Katherine gain her BVA with distinction and pursue her ambition of becoming an artist.

"I have always wanted to study the Visual Arts. Having the option to study locally was pivotal to my choice of university. The lecturers are artists themselves and their personal experiences within their own art practices afford students so much more than just the course. Having the opportunity to exhibit locally and create networks within the local artist community is exciting and really sets you up to begin your own practice, on a local and national level. The depth of knowledge shared by staff and other students is generous and inspiring. There's a genuine supportive, collaborative, community feel - not to mention the space you share - the student studios are huge with wonderful light and have the best views in town."

Katherine Douglas
Bachelor of Visual Arts





“It’s pretty simple, if it wasn’t for my time at the Arts Academy, the detail of the teaching methods and the work ethic it instilled in me, I wouldn’t be enjoying the career I’ve had over the past 12 years.”

Josh Piterman

Former student, award-winning music theatre performer and recording artist.

Playing ‘The Phantom’ in Phantom of the Opera, Arts Centre Melbourne, 2023.

Bachelor of Performing Arts

Our Arts Academy is renowned for its holistic and multi-disciplinary approach to training contemporary performers. We develop your practice through a comprehensive curriculum that includes classes in acting, singing, voice, movement, dance, creativity, theatre-making, aerobic fitness and mindfulness. You will be prepared for a range of career opportunities in television and theatre, music theatre, opera, film, cabaret, comedy and multi-media performance.

LOCATION Ballarat	DURATION 3 years	ATAR Required	APPLICATION VTAC / Direct
ENTRY REQUIREMENTS Units 3 and 4: a study score of at least 20 in any English.		ENTRY REQUIREMENTS (NON-YEAR 12) Higher Education, VET and/or Work/Life Experience.	
ESSENTIAL REQUIREMENTS Interview and audition. See study.federation.edu.au			

Bachelor of Arts (Creative Arts) (Honours)

This course often serves as a prelude to a higher degree in research or advanced professional practice in careers that entail complex research work. It will prepare individuals for professional or research work in the disciplinary field of their preference by providing training in theory, methodology and epistemology. This Creative Arts stream involves study in ceramics/3D, drawing, printmaking, photography, painting, performance and dance.

LOCATION Ballarat	DURATION 1 year	ATAR Not required	APPLICATION Direct
ENTRY REQUIREMENTS (NON-YEAR 12) Bachelor or Arts with relevant discipline sequence with no less than a Distinction in upper-level discipline-specific units (Grade Point Average (GPA) of at least 6.0).			
ESSENTIAL REQUIREMENTS Submit Research Proposal form. See study.federation.edu.au			



Psychology

When you study Psychology at Federation University, you will be in a highly supportive environment, as demonstrated by our number 1 ranking for student support from psychology graduates across all Victorian public universities.

Bachelor of Psychological Science

This foundation course delivers fundamental knowledge, theory and understanding of different aspects of psychology. Explore a range of units to examine complexities of human thought and behaviour, including developmental psychology, cognitive psychology, social psychology, abnormal psychology, and personality. In addition to these core units, you may choose electives including biological, exercise and sports or environmental science, behavioural studies; business, history, indigenous studies, community and human services, criminal justice, literature, media and screen studies, outdoor and environmental education, sociology, or writing.

LOCATION Ballarat, Berwick, Gippsland, ^{FOL} Federation Online	DURATION 3 years	GUARANTEED ATAR 50	APPLICATION VTAC / Direct
ENTRY REQUIREMENTS Units 3 and 4: a study score of at least 20 in any English.			
ENTRY REQUIREMENTS (NON-YEAR 12) Higher Education, VET and/or Work/Life Experience.			
ESSENTIAL REQUIREMENTS See study.federation.edu.au		PROFESSIONAL RECOGNITION Australian Psychology Accreditation Council (APAC)	

Bachelor of Psychological Science (Honours)

With a strong research emphasis, you will plan, implement and report on a research project under supervision, in addition to undertaking a number of core units (Psychological Practice, Psychological Research, Integrating Research and Practice and Psychological Assessment). The course is for students who wish to engage in research and professional practice in the field of psychology.

LOCATION Ballarat, Berwick, Gippsland, Online	DURATION 1 year	ATAR Not required	APPLICATION Direct
ESSENTIAL REQUIREMENTS See study.federation.edu.au		PROFESSIONAL RECOGNITION Australian Psychology Accreditation Council (APAC)	



“My educational achievements have been nurtured by expert staff who are passionate about their field and care about the success of every student. Every educator knows me by name and has provided me with the flexibility to balance family, work, and my degree.

My educational journey with Federation University began with FAST. It unlocked my potential and led to my success in the Bachelor of Psychological Science.

My course and clinical placement have imparted tangible skills that I apply to academic and workplace settings. I am grateful for the opportunities provided by Federation University and look forward to continuing my educational and professional journey with Federation University.”

Jacinta Jackson
Bachelor of Psychological Science

Master of Professional Psychology

This course develops specialised knowledge and skills for the professional practice of psychology, including ethical and legal practice, assessment, and interventions across the lifespan. Graduates can apply for provisional registration as a general psychologist, and pursue a one year internship leading to general registration as a psychologist.

LOCATION Ballarat	DURATION 1 year	ATAR Not required	APPLICATION Direct
ENTRY REQUIREMENTS (NON-YEAR 12) Bachelor's degree. See study.federation.edu.au		ESSENTIAL REQUIREMENTS See study.federation.edu.au	
PROFESSIONAL RECOGNITION Australian Psychology Accreditation Council (APAC)			

Master of Psychology (Clinical)

Advance your knowledge of clinical problems in childhood, adolescence and adulthood, as well your understanding of evidence-based psychological assessments and interventions and the ethics related to your work. Combining coursework, clinical practice and research, this course prepares you for registration as a psychologist with the Psychology Board of Australia. Graduates are eligible to apply for psychologist positions, including clinical positions as a psychologist in either the public or private sectors.

LOCATION Ballarat	DURATION 2 years	ATAR Not required	APPLICATION Direct
ENTRY REQUIREMENTS (NON-YEAR 12) Bachelor's degree. See study.federation.edu.au		ESSENTIAL REQUIREMENTS See study.federation.edu.au	
PROFESSIONAL RECOGNITION Australian Psychology Accreditation Council (APAC), Psychology Board of Australia			

#1 VICTORIA & ★★★★★

STUDENT SUPPORT

PSYCHOLOGY

The Good Universities Guide, undergraduate level 2022

Rural Sciences

Certificate II in Agriculture

Discover how to apply chemicals, care for livestock, operate quad bikes and more. Obtain the skills to work in a variety of practical and often physical jobs, with animals, crops or mixed farming.

NATIONAL COURSE CODE AHC20122	FREE TAFE Yes	LOCATION Ballarat (RSSC)
DURATION 5 months	CONTACT PER WEEK 3 days	
STUDY TYPE Study may include full-time, part-time, on-campus, flexible delivery, workshops, block mode and blended delivery.		
ENTRY REQUIREMENTS Language, literacy and numeracy assessment and Pre-training review.		

Certificate III in Agriculture

Gain hands-on training to bring skills to your family farm or enter one of the many areas in the multi-billion dollar agriculture industry.

NATIONAL COURSE CODE AHC30122	FREE TAFE Yes	LOCATION Ballarat (RSSC)
STUDY TYPE Traineeship	DURATION Up to 2 years Traineeship	CONTACT PER WEEK 6 hours
ENTRY REQUIREMENTS Signed training contract with employer and apprentice (AAC). Language, literacy and numeracy assessment and Pre-training review.		

Certificate III in Horticulture

You'll learn a wide range of creative, hands-on skills like planning plant displays, operating machinery, pruning and propagating plants.

NATIONAL COURSE CODE AHC30722	FREE TAFE Yes	LOCATION Ballarat (Gillies St)
DURATION 1 or 2 years part-time	CONTACT PER WEEK 3 days	
STUDY TYPE Traineeship <i>or</i> Study may include full-time, part-time, on-campus, flexible delivery, workshops, block mode and blended delivery.		
ENTRY REQUIREMENTS If Trainee, must be employed/signed as trainee. Language, literacy and numeracy assessment and Pre-training review.		

Certificate III in Landscape Construction

Become a qualified and skilled landscape gardener to work across private gardens, commercial landscapes and public recreational spaces.

NATIONAL COURSE CODE AHC30921	FREE TAFE No	LOCATION Ballarat (Gillies St)
STUDY TYPE Apprenticeship	DURATION 4 years	CONTACT PER WEEK 6 hours
ENTRY REQUIREMENTS Signed training contract with employer and apprentice (AAC). Language, literacy and numeracy assessment and Pre-training review.		

Certificate III in Parks and Gardens

Learn a range of horticulture topics and graduate with skills suitable for local councils, private contractors and more.

NATIONAL COURSE CODE AHC31021	FREE TAFE No	LOCATION Ballarat (Gillies St)
STUDY TYPE Apprenticeship	DURATION 3 years	CONTACT PER WEEK 6 hours
ENTRY REQUIREMENTS Signed training contract with employer and apprentice (AAC). Language, literacy and numeracy assessment and Pre-training review.		

Certificate IV in Agriculture

Study specialist topics for livestock production, along with budgeting and whole of farm planning and animal health/livestock management.

NATIONAL COURSE CODE AHC40122	FREE TAFE Yes	LOCATION Ballarat (RSSC)
DURATION 1 year	CONTACT PER WEEK 1 day	
STUDY TYPE Study may include full-time, part-time, on-campus, flexible delivery, workshops, block mode and blended delivery.		
ENTRY REQUIREMENTS Language, literacy and numeracy assessment and Pre-training review.		





Science

Certificate III in Conservation and Ecosystem Management

Learn about all areas of conservation and land management. Choose electives from recognising fauna, surveying pests and operating chainsaws while also learning the important core skills like workplace safety and environmentally sustainable work practices. Then take the next step in roles like community field officer, wildlife officer, weeds operator and more.

NATIONAL COURSE CODE	FREE TAFE	LOCATION	DURATION	CONTACT PER WEEK
AHC31421	No	Ballarat (Gillies St)	1 year on-campus or 2 year traineeship	18 hours
STUDY TYPE Traineeship or study may include full-time, part-time, on-campus, flexible delivery, workshops, block mode and blended delivery.				
ENTRY REQUIREMENTS Signed training contract with employer. Language, literacy and numeracy assessment and Pre-training review.				
PATHWAY TO Bachelor of Environmental and Conservation Science (120 credit points)				

Diploma of Conservation and Ecosystem Management

Protect endangered species, advise on bush fire prevention programs, manage waterway redevelopment projects and take your love for the environment and make it your career through Federation's Diploma of Conservation and Ecosystem Management.

NATIONAL COURSE CODE	FREE TAFE	LOCATION	DURATION	CONTACT PER WEEK
AHC51120	No	Ballarat (Gillies St)	1 year	18 hours
STUDY TYPE Study may include full-time, part-time, on-campus, flexible delivery, workshops, block mode and blended delivery.				
ENTRY REQUIREMENTS Language, literacy and numeracy assessment and Pre-training review.				
PATHWAY TO Bachelor of Environmental and Conservation Science (120 credit points)				

#1 VICTORIA & ★★★★★
OVERALL EDUCATIONAL EXPERIENCE
SKILLS DEVELOPMENT
STUDENT SUPPORT
TEACHING QUALITY
SCIENCE AND MATHEMATICS

The Good Universities Guide, undergraduate level 2022



Bachelor of Biomedical Science

Biomedicine plays a major role in helping people lead healthier lives. Study lifespan nutrition, food microbiology, metabolism and applied biochemistry. Be prepared for a career in biomedical research or a position in a range of health-related industries such as laboratory technology, medical sales, research and pharmaceuticals.

LOCATION Ballarat, Berwick, Gippsland, Online			
DURATION 3 years	GUARANTEED ATAR 60	APPLICATION VTAC / Direct	
ENTRY REQUIREMENTS Units 3 and 4: a study score of at least 20 in any Mathematics or at least 20 in any Science; Units 3 and 4: a study score of at least 20 in any English.			
ENTRY REQUIREMENTS (NON-YEAR 12) Higher Education, VET and/or Work/Life Experience.			

Bachelor of Biomedical Science (Gippsland Partnership)

This course is designed to enable Gippsland-origin students[#] to qualify for the Monash University graduate entry medicine program and then, if selected, complete their medical training in the Gippsland region. Selected students will complete a Federation University biomedical science degree, comprising of 16 units of study with Federation University and 6 units with Monash University[^].

LOCATION Gippsland	DURATION 3 years	ATAR 85 minimum	APPLICATION VTAC / Direct
ENTRY REQUIREMENTS Units 3 and 4: a study score of at least 20 in any Mathematics or at least 20 in any Science; Units 3 and 4: a study score of at least 20 in any English.			

[#] Gippsland origin is defined as residency for at least 10 years cumulatively or any 5 years consecutively in a Gippsland region classified as ASGS-RA 2-5 (Australian Statistical Geography Standard – Remoteness Areas; includes all Gippsland shires and outer metro regions east of Pakenham).

[^] Some travel to Clayton will be required for the units undertaken with Monash University.

Bachelor of Environmental and Conservation Science

Learn about the management, conservation and rehabilitation of our natural and degraded ecosystems. With a strong focus on the Australian environment, you will explore areas such as ecology and wildlife, water and climate, mine site rehabilitation, landscape management and restoration.

LOCATION Ballarat, Berwick, Gippsland, Online		
DURATION 3 years	GUARANTEED ATAR 60	APPLICATION VTAC / Direct
ENTRY REQUIREMENTS Units 3 and 4: a study score of at least 20 in any Mathematics or at least 20 in any Science; Units 3 and 4: a study score of at least 20 in any English.		
ENTRY REQUIREMENTS (NON-YEAR 12) Higher Education, VET and/or Work/Life Experience.		
PATHWAY AHC51120 Diploma of Conservation and Ecosystem Management (120 credit points towards Bachelor degree; or 3 years combined course length)		

Bachelor of Food and Nutrition

This qualification provides students with a deep understanding of the nutritional needs of various population groups and sub-groups, according to their age, lifestyle and health status. It also provides students an opportunity to develop key skills required for setting up a small business.

LOCATION ^{FOL} Federation Online	DURATION 3 years	ATAR Required	APPLICATION Direct
ENTRY REQUIREMENTS Units 3 and 4: a study score of at least 20 in any Mathematics or at least 20 in any Science; Units 3 and 4: a study score of at least 20 in any English.			
ENTRY REQUIREMENTS (NON-YEAR 12) Higher Education, VET and/or Work/Life Experience.			
PROFESSIONAL RECOGNITION Nutrition Society of Australia			

GUARANTEED ATAR See definition on p 75

^{FOL} This course is available through Federation Online - online.federation.edu.au

Federation's Global Professional School provides opportunities for students like Kara to immerse themselves in a different environment and culture through the Study Abroad service.

"Students and teachers from the University of Peradeniya invited us to plant trees in a section of the Knuckles Submontane Conservation Forest - parts of which had previously been cleared for tea cultivation. It was a rewarding experience and I look forward to one day returning to the area to see how it has changed. I am grateful to the students and teachers of the University of Peradeniya for being so welcoming and allowing us to contribute towards this restoration project."

Kara Sewart

Bachelor of Environmental and Conservation Science



Bachelor of Science

If you are fascinated by science, this comprehensive degree could be your passport to an exciting future in one of many diverse areas. Tailor this course to your specific career destination and interests. Majors include Biochemistry, Biological Science, Molecular Biology, Behavioural Science, Chemistry, Ecology, Environmental Restoration, Exercise Science, Food Science, Geoscience, Health and Nutrition, Mathematics and Microbiology.

LOCATION Ballarat, Berwick, Gippsland, Online		
DURATION 3 years	GUARANTEED ATAR 60	APPLICATION VTAC / Direct
ENTRY REQUIREMENTS Units 3 and 4: a study score of at least 20 in any Mathematics or at least 20 in any Science; Units 3 and 4: a study score of at least 20 in any English.		
ENTRY REQUIREMENTS (NON-YEAR 12) Higher Education, VET and/or Work/Life Experience.		
PROFESSIONAL RECOGNITION Royal Australian Chemical Institute; Australian Society for Microbiology; Environment Institute of Australia and New Zealand		

Bachelor of Science (Advanced)

As a high achieving student, complete a specialised pathway allowing for a double major. A semester long project in third year provides advanced skills in experimental design, data collection and synthesis, problem solving and critical analysis. Majors include Behavioural Science, Biochemistry, Biological Science, Chemistry, Ecology, Environmental Restoration, Exercise Science, Food Science, Geoscience, Health and Nutrition, Mathematics, Microbiology and Molecular Biology.

LOCATION Ballarat, Berwick, Gippsland, Online		
DURATION 3 years	ATAR 90 minimum	APPLICATION VTAC / Direct
ENTRY REQUIREMENTS English Units 3 and 4: a study score of at least 30 in any English. Maths/Science Units 3 and 4: a study score of at least 30 in two Maths (Methods or Specialist) or Sciences (Biology, Chemistry, Environmental Science, Geography, Physics or Psychology).		
PROFESSIONAL RECOGNITION Royal Australian Chemical Institute; Australian Society for Microbiology; Environment Institute of Australia and New Zealand		

Bachelor of Science (Honours)

Undertake a research project, as well as coursework studies in research methodologies and communication. This is a fourth-year course for graduates of science, IT and mathematical science undergraduate degrees. It serves as a prelude to a research higher degree.

LOCATION Ballarat, Berwick, Gippsland		
DURATION 1 year	ATAR Not required	APPLICATION VTAC / Direct
ENTRY REQUIREMENTS (NON-YEAR 12) Bachelor's degree. See study.federation.edu.au		
PROFESSIONAL RECOGNITION Royal Australian Chemical Institute; Australian Society for Microbiology; Environment Institute of Australia and New Zealand		

Graduate Certificate in Brewing

Develop an in-depth knowledge of the scientific principles and practice of malting and brewing. Learn about the raw materials, wort production, fermentation and analysis of the brewing process, typically required for small scale breweries, suppliers of breweries, and allied industries.

LOCATION Ballarat	DURATION 2 years	ATAR Not required	APPLICATION Direct
ENTRY REQUIREMENTS (NON-YEAR 12) Bachelor's degree. See study.federation.edu.au			

Bachelor of Veterinary and Wildlife Science

This degree offers a regional perspective relevant to local wildlife and animal health. You will study a wide range of units including anatomy, animal health, biochemistry, cellular metabolism, immunology, microbiology, physiology and zoology.

LOCATION Ballarat, Berwick, Gippsland, Online		
DURATION 3 years	GUARANTEED ATAR 60	APPLICATION VTAC / Direct
ENTRY REQUIREMENTS Units 3 and 4: a study score of at least 20 in any Mathematics or at least 20 in any Science; Units 3 and 4: a study score of at least 20 in any English.		
ENTRY REQUIREMENTS (NON-YEAR 12) Higher Education, VET and/or Work/Life Experience.		
ESSENTIAL REQUIREMENTS Non-Year 12 VTAC applicants: VTAC Personal Statement form. See study.federation.edu.au		



Nicole is studying a food and nutrition degree part-time whilst balancing work at Bulk Nutrients and pursuing professional road cycling.

"Federation University provides really good study assistance and has been extremely supportive of my cycling commitments throughout my studies. I'm fortunate to have benefited from their Elite Athlete Program."

Nicole Frain
Bachelor of Food and Nutrition



Social Work, Community Work, Criminology, Arts and Social Sciences

Certificate IV in Child, Youth and Family Intervention

Choose to specialise in residential and out of home care, family support and early intervention, with electives covering residential care, relationships, trauma, well-being and more. Follow a career as a case support worker, a child or youth support worker or in family intervention. Placement component: minimum 120 hours.

NATIONAL COURSE CODE CHC40313	FREE TAFE Yes	LOCATION Ballarat
DURATION 11 months	CONTACT PER WEEK 2 days	
STUDY TYPE Study may include full-time, part-time, on-campus, flexible delivery, workshops, block mode and blended delivery.		
ENTRY REQUIREMENTS Interview, Language, literacy and numeracy assessment and Pre-training review.		

Certificate IV in Community Services

Learn how to support people in a person centred, individualised approach and advocate for human rights. This course will provide you with the knowledge and skills to prepare you for a variety of roles within the community services sector and equip you for further study.

NATIONAL COURSE CODE CHC42015	FREE TAFE Yes	LOCATION Ballarat
DURATION 1 year	CONTACT PER WEEK 2 days	
STUDY TYPE Traineeship or study may include full-time, part-time, on-campus, flexible delivery, workshops, block mode and blended delivery.		
ENTRY REQUIREMENTS Language, literacy and numeracy assessment and Pre-training review. Working with Children Check, Police Check.		

Certificate IV in Disability

Through a career in the disability services sector you can work in community settings, support people in their homes or base yourself in residential homes. Working together with other health professionals will be a central part of your career, as you learn how to help people with their physical and mental wellbeing in a person centred way. Placement component: minimum 120 hours.

NATIONAL COURSE CODE CHC43115	FREE TAFE Yes	LOCATION Ballarat
DURATION 1 year	CONTACT PER WEEK 2 days	
STUDY TYPE Traineeship or study may include full-time, part-time, on-campus, flexible delivery, workshops, block mode and blended delivery.		
ENTRY REQUIREMENTS Interview, Language, literacy and numeracy assessment and Pre-training review.		

Certificate IV in Mental Health

Gain the specialised knowledge and skills to launch or advance your career as a trained professional helping people affected by mental illness and psychiatric disability. Work in in respite care, residential services, rehabilitation programs, clinical settings and corrective services. Placement component: minimum 80 hours.

NATIONAL COURSE CODE CHC43315	FREE TAFE Yes	LOCATION Ballarat
DURATION 1 year	CONTACT PER WEEK 2 days	
STUDY TYPE Study may include full-time, part-time, on-campus, flexible delivery, workshops, block mode and blended delivery.		
ENTRY REQUIREMENTS Language, literacy and numeracy assessment and Pre-training review.		

Diploma of Mental Health

Gain the specialist knowledge and skills to provide counselling, referral, advocacy and education/health promotion services to clients in relation to mental health issues.

NATIONAL COURSE CODE CHC53315	FREE TAFE No	LOCATION Ballarat
DURATION 2 years	CONTACT PER WEEK 3.5 days	
STUDY TYPE Study may include full-time, part-time, on-campus, flexible delivery, workshops, block mode and blended delivery.		
ENTRY REQUIREMENTS Language, literacy and numeracy assessment and Pre-training review.		



Laura is a graduate of Federation’s Bachelor of Arts, and now works as a content writer for an international software company.

“It’s completely amazing that I’ve been able to get a job in my chosen field,” she said.

After completing VCE at Ballarat Clarendon College, Laura studied the Certificate IV in Professional Writing and Editing and continued the pathway into the degree because of her writing passion.

Completing a writing major in the Bachelor of Arts, Laura further developed her literature and writing competence.

“The biggest skill I acquired at Federation was how to succeed independently. I work remotely and am responsible for my own tasks, and self-management is an essential skill at uni. I was also able to use my experience and proven skills in writing as a selling point in my resume.”

“The teachers are excellent. They were happy to make time for students outside of class and they’re clearly passionate about their fields.”

Laura Wilson
Bachelor of Arts

#1 IN VICTORIA & ★★★★★
SKILLS DEVELOPMENT

★★★★★ MEDIAN GRADUATE INCOME ONE YEAR
HUMANITIES, CULTURE AND SOCIAL SCIENCES

The Good Universities Guide, undergraduate level 2022

#1 IN AUSTRALIA & ★★★★★
SKILLS DEVELOPMENT

#1 IN VICTORIA & ★★★★★
LEARNING RESOURCES
OVERALL EDUCATIONAL EXPERIENCE
STUDENT SUPPORT
TEACHING QUALITY

LAW AND PARALEGAL STUDIES

The Good Universities Guide, undergraduate level 2022

#1 IN VICTORIA & ★★★★★
STUDENT SUPPORT

MEDIAN GRADUATE INCOME ONE YEAR
SOCIAL WORK

The Good Universities Guide, undergraduate level 2022

#1 IN VICTORIA & ★★★★★
SKILLS DEVELOPMENT

★★★★★ STUDENT SUPPORT
SOCIAL WORK

The Good Universities Guide, postgraduate level 2022

Diploma of Community Services

Successfully case manage and support people in times of crisis, or those requiring help in some way in their lives. You can focus on a particular interest area through electives, working with clients affected by drugs and alcohol and people with mental health issues. You will also learn how to work in a client-centred and family-focussed way. Placement component: minimum 200 hours.

NATIONAL COURSE CODE CHC52015	FREE TAFE Yes	LOCATION Ballarat, Wimmera
DURATION 2 years	CONTACT PER WEEK 2 days	
STUDY TYPE Traineeship or study may include full-time, part-time, on-campus, flexible delivery, workshops, block mode and blended delivery.		
ENTRY REQUIREMENTS Language, literacy and numeracy assessment and Pre-training review. Working with Children Check, Police Check.		
PATHWAY TO Bachelor of Community and Human Services (120 credit points)		

Course in Introduction to the National Disability Insurance Scheme

This course is appropriate for current and future staff of the National Disability Insurance Agency (NDIA) who will be working with the National Disability Insurance Scheme (NDIS) and its programs. It is ideal for workers currently employed in mental health or disability services, and potential students considering a career in these areas.

NATIONAL COURSE CODE 22469VIC	FREE TAFE No	LOCATION Ballarat, Wimmera
STUDY TYPE Short Course	DURATION 6 weeks	CONTACT PER WEEK 1 day (online and classroom)
ENTRY REQUIREMENTS Language, literacy and numeracy assessment and Pre-training review.		

Bachelor of Arts

Develop a critical perspective and the transferable skills employers are seeking as you prepare to take a leading role in work and society. Choose from majors: History, Indigenous Studies, Literature, Media and Screen Studies, Sociology, Writing, Community Work, Criminal Justice, Education, Visual Arts, Marketing, Entrepreneurship, Web Project Development and Behavioural Studies. A minor is also available in Visual Culture. Career opportunities include working in non-government organisations, private sector or public service, community organisations, media and public relations, information technology, writing and publishing, research, recreation and tourism.

LOCATION Ballarat, Berwick, Gippsland, Online		
DURATION 3 years	GUARANTEED ATAR 50	APPLICATION VTAC / Direct
ENTRY REQUIREMENTS Units 3 and 4: a study score of at least 20 in any English.		
ENTRY REQUIREMENTS (NON-YEAR 12) Higher Education, VET and/or Work/Life Experience.		
PATHWAY Advanced Diploma of Accounting FNS60217 (120 credit points); Diploma of Community Services CHC52015 (60 credit points); Diploma of Alcohol and Other Drugs CHC53215 (60 credit points); Diploma of Youth Work CHC50413 (60 credit points); Diploma of Business BSB50120 (60 credit points); Diploma of Leadership and Management BSB50420 (60 credit points); Diploma of Accounting FNS50217 (60 credit points); Diploma of Professional Writing and Editing CAU50118 (60 credit points)		

Bachelor of Arts (Humanities) (Honours)

This fourth-year course often serves as a prelude to a higher degree in research or advanced professional practice in careers that entail complex research work. It will prepare individuals for professional or research work in the disciplinary field of their preference by providing training in theory, methodology and epistemology. This Humanities stream involves study in History, Literature, Writing, Media and Screen Studies, Indigenous Studies and Philosophy.

LOCATION Ballarat, Gippsland, Online	DURATION 1 year	ATAR Not required	APPLICATION Direct
ENTRY REQUIREMENTS Bachelor's degree. See study.federation.edu.au			
ESSENTIAL REQUIREMENTS Submit Research Proposal form. See study.federation.edu.au			

Bachelor of Arts (Social Science) (Honours)

This fourth-year course often serves as a prelude to a higher degree in research or advanced professional practice in careers that entail complex research work. It will prepare individuals for professional or research work in the disciplinary field of their preference by providing training in theory, methodology and epistemology. This Social Science stream involves study in Sociology, History, Criminology or Criminal Justice, Indigenous Studies, and Community and Human Services.

LOCATION Ballarat, Gippsland, Online	DURATION 1 year	ATAR Not required	APPLICATION Direct
ENTRY REQUIREMENTS Bachelor's degree. See study.federation.edu.au			
ESSENTIAL REQUIREMENTS Submit Research Proposal form. See study.federation.edu.au			

Bachelor of Social Work

Develop the professional skills and ethics needed to succeed in the workplace, like communications and interpersonal skills and the theories behind your practices. This new course, designed to meet the accreditation standards of the Australian Association of Social Workers, prepares graduates to practice as social workers in regional, rural, metropolitan and international social work practice in government, private and not-for-profit organisations. We offer entry from secondary school, credit pathways to transition from TAFE to university studies and authentic study and work experiences so that you are a job-ready graduate.

LOCATION Gippsland, ^{FLEX} Gippsland	DURATION 4 years	ATAR Required	APPLICATION VTAC / Direct
ENTRY REQUIREMENTS Units 3 and 4: a study score of at least 20 in any English.			
ESSENTIAL REQUIREMENTS Higher Education, VET and/or Work/Life Experience.			

GUARANTEED ATAR See definition on p 75

^{FLEX} Flexible delivery is a blend of online study with regular, scheduled on-campus classes.

*Proposed course only. Subject to Federation's course accreditation processes.

*Bachelor of Community and Human Services

Provide support and assistance to a range of individuals, families and communities experiencing family violence, poverty, homelessness, mental health or living with a disability. Units include 'social policy', 'social issues and personal values' and 'Australian indigenous societies'. Spend time in the industry, putting your skills into practice and experiencing real-life situations. Career opportunities include case management, counselling, social research, youth justice, family and disability support, aged care, community engagement programs and more.

LOCATION Ballarat, Berwick, Gippsland, FLEX Ballarat, FLEX Berwick, FLEX Gippsland		
DURATION 3 years	GUARANTEED ATAR 50	APPLICATION VTAC / Direct
ENTRY REQUIREMENTS Units 3 and 4: a study score of at least 20 in any English.	ENTRY REQUIREMENTS (NON-YEAR 12) Higher Education, VET and/or Work/Life Experience.	
ESSENTIAL REQUIREMENTS Working with Children Check, Police Check. See study.federation.edu.au		
PATHWAY CHC52015 Diploma of Community Services (120 credit points); CHC53215 Diploma of Alcohol and Other Drugs (120 credit points); CHC53315 Diploma of Mental Health (120 credit points); CHC53413 Diploma of Youth Work (120 credit points); CHC52015 Diploma of Community Services Case Management Specialisation (120 credit points); CHC52015 Diploma of Community Services Forensic/Statutory Stream (120 credit points).		

Bachelor of Criminal Justice Management

Combine your passion for social and criminal justice with people and project management skills and make a real difference to the people impacted by the criminal justice system.

LOCATION Ballarat, Berwick, Gippsland, Online		
DURATION 3 years	GUARANTEED ATAR 50	APPLICATION VTAC / Direct
ENTRY REQUIREMENTS Units 3 and 4: a study score of at least 20 in any English.	ENTRY REQUIREMENTS (NON-YEAR 12) Higher Education, VET and/or Work/Life Experience.	
PATHWAY FNS50217 Diploma of Accounting (60 credit points); BSB50420 Diploma of Leadership and Management (60 credit points).		

Master of Social Work (Qualifying)

Develop the skills for social work with individuals and communities to change lives, enhance wellbeing and strengthen culturally and socially diverse communities. Your advanced studies in social work, accredited by the Australian Association of Social Workers, are underpinned by principles of human rights and social and environmental justice. Engage in knowledge and skills for practice focused on social change, community development, empowerment, social inclusion, well-being and quality of life. We offer entry from undergraduate university studies, career change and development and authentic study and work experiences so that you are a job-ready graduate.

LOCATION Ballarat, Berwick	DURATION 2 years	ATAR Not required	APPLICATION Direct
ENTRY REQUIREMENTS (NON-YEAR 12) Bachelor degree with at least one year of study, or the equivalent of full-time studies, in social and behavioural sciences. See study.federation.edu.au			
ESSENTIAL REQUIREMENTS Working with Children Check, Police Check. See study.federation.edu.au			
PROFESSIONAL RECOGNITION Australian Association of Social Workers (AASW)			

FLEX Flexible delivery is a blend of online study with regular, scheduled on-campus classes.

*This qualification has been assessed as being an equivalent qualification for the purposes of the Mandatory Minimum Qualifications policy for employment in specialist family violence practitioner roles in Victoria.

"Out of all of the Criminal Justice/Criminology courses I looked at in Year 12, I always came back to the one offered by Federation University. I am so glad I was offered a place, as I have enjoyed every aspect of the course. This course taught me that there is so much more to the Criminal Justice system than crime committal, police arrests and court sentencing."

Elise Bainbridge

Bachelor of Criminology and Criminal Justice

Bachelor of Criminology and Criminal Justice

Understand crime data, why crime rates and types vary in different countries and across remote, regional and urban settings. Learn to evaluate the effectiveness of different crime prevention strategies and policies, and develop a knowledge of criminal justice programs in international jurisdictions. Choose to complete a second major (8 courses) from Community and Human Services, Behavioural Studies, Sociology and IT security; or two minor options (4 courses each) from Community and Human Services, Behavioural Studies, Sociology, IT security, Writing and Indigenous Studies. Prepare for work in roles including state and federal police, in courts and corrections, government departments and for work in community based agencies delivering criminal justice programs.

LOCATION Ballarat, Berwick, Gippsland, Online		
DURATION 3 years	GUARANTEED ATAR 50	APPLICATION VTAC / Direct
ENTRY REQUIREMENTS Units 3 and 4: a study score of at least 20 in any English.	ENTRY REQUIREMENTS (NON-YEAR 12) Higher Education, VET and/or Work/Life Experience.	
PATHWAY CHC52015 Diploma of Community Services (30 credit points); CHC53215 Diploma of Alcohol and Other Drugs (30 credit points); CHC53315 Diploma of Mental Health (30 credit points); CHC50413 Diploma of Youth Work (30 credit points); BSB50420 Diploma of Leadership and Management (60 credit points); FNS50217 Diploma of Accounting (60 credit points); 22320VIC Diploma of Justice (120 credit points); 22321VIC Advanced Diploma of Justice (180 credit points).		

*Graduate Certificate in Social and Community Services

Further develop your knowledge and skills in social and community services to become an effective human services professional. This specialist course will prepare you to provide expert advice on a broad range of human services settings to government and non-government organisations. This course is also a pathway to the Master of Social Work (Qualifying).

LOCATION Ballarat, Berwick, Online	DURATION 0.5 year	ATAR Not required	APPLICATION Direct
ENTRY REQUIREMENTS Bachelor's Degree AQF Level 7 in any discipline OR Diploma VET/TAFE or Associate Degree qualification in a related discipline AND minimum of 3 years full-time related professional experience. See study.federation.edu.au			



Sport, Health, Physical and Outdoor Education

At our state-of-the-art Health and Sports Precinct, our students develop their practical and clinical skills in a high-quality learning environment.

Offering the ideal backdrop to extend our world-class research, these facilities also provide sports science students with commercial experience in the student-led clinic and community gymnasium.

The updated anatomy and physiology laboratories also support learning and teaching in health related programs such as exercise science, physical education, nursing, paramedicine and biomedical science.

Bachelor of Exercise and Sport Science

Choose to specialise in either applied exercise programming, health or teaching and discover how to plan and implement healthy living for diverse populations. Learn through industry placements as well as practical experiences.

LOCATION	DURATION	GUARANTEED ATAR	APPLICATION
Ballarat, ^{FLEX} Gippsland	3 years	50	VTAC / Direct
ENTRY REQUIREMENTS			
Units 1 and 2: satisfactory completion in two units (any study combination) of Maths: General Mathematics, Maths: Mathematical Methods or Maths: Specialist Mathematics or Units 3 and 4: any Mathematics; Units 3 and 4: a study score of at least 20 in any English.			
ENTRY REQUIREMENTS (NON-YEAR 12)			
Higher Education, VET and/or Work/Life Experience.			
PROFESSIONAL RECOGNITION			
Exercise and Sport Science Australia (ESSA), and level 1 accreditation – varied.			

^{FLEX}Flexible delivery is a blend of online study with regular, scheduled on-campus classes.



“The lecturers at Federation have been empathic and encouraging, helping me strive for success within my course. The supportive nature has allowed me to develop within the sport science realm and help forge a pathway into a future career.

During my placement with Western Australia junior basketball program, I was able to build a network of amazing contacts to assist with future employment prospects post university.”

William Quartermain
Bachelor of Exercise and Sport Science

Bachelor of Exercise and Sport Science (Honours)

Increase specialist knowledge and develop skills in your major field of interest in exercise and sport science. Undertake a research project, as well as coursework studies in research methodologies and communication. This is a fourth-year course for graduates of science, IT and mathematical science undergraduate degrees. It serves as a prelude to a research higher degree.

LOCATION	DURATION	ATAR	APPLICATION
Ballarat	1 year	Not required	Direct
ENTRY REQUIREMENTS (NON-YEAR 12) See study.federation.edu.au			

Bachelor of Health Sciences (Honours)

Undertake a research project, as well as coursework studies in research methodologies and communication. This is a fourth-year course for graduates of a science, IT or mathematical science undergraduate degree and serves as a prelude to a research higher degree.

LOCATION	DURATION	ATAR	APPLICATION
Ballarat	1 year	Not required	Direct
ENTRY REQUIREMENTS (NON-YEAR 12) Bachelor's degree. See study.federation.edu.au			

Bachelor of Outdoor and Environmental Education

Now is a great time to learn leadership, teaching and people skills to educate people about the outdoors and the environment. This course has a blend of hands-on and theoretical work, with units including outdoor leadership, community and bush environments, and coastal environments. You can also choose to major in tourism, human behaviour or conservation science. Perhaps you'll work in resorts, councils or community organisations. And maybe you'll start your own ecotourism company.

LOCATION	DURATION	GUARANTEED ATAR	APPLICATION
Ballarat, Gippsland	3 years	50	VTAC / Direct
ENTRY REQUIREMENTS Units 3 and 4: a study score of at least 20 in any English			
ENTRY REQUIREMENTS (NON-YEAR 12) Higher Education, VET and/or Work/Life Experience.			
ESSENTIAL REQUIREMENTS Working with Children Check, Police Check. See study.federation.edu.au			
PROFESSIONAL RECOGNITION Outdoors Victoria (OV), Outdoor Education Australia (OEA)			

Bachelor of Secondary Education (Health and Physical Education Teaching)

Prepare to teach from year 7 through to VCE and specialise in health and PE education as well as another teaching method in English, history, maths, psychology, science or outdoor education. Areas of study include exercise physiology, biomechanics, motor development and learning, fundamentals and foundations of health and physical education, health and human development, nutrition, physical activity, creative movement, applied sports science, contemporary curriculum design, pedagogy and assessment for teaching and learning in health and physical education.

LOCATION	DURATION	GUARANTEED ATAR	APPLICATION
Ballarat, Berwick, Gippsland	4 years	70	VTAC / Direct
ENTRY REQUIREMENTS			
Units 1 and 2: satisfactory completion in two units (any study combination) of Maths: General Mathematics, Maths: Mathematical Methods or Maths: Specialist Mathematics or Units 3 and 4: any Mathematics; Units 3 and 4: a study score of at least 30 in English (EAL) or at least 25 in English other than EAL.			
ENTRY REQUIREMENTS (NON-YEAR 12)			
Higher Education, VET and/or Work/Life Experience. Literacy & Numeracy test required if VCE benchmarks not met.			
ESSENTIAL REQUIREMENTS			
Altus Suite online test. Working with Children Check, Police Check optional. See study.federation.edu.au			
PROFESSIONAL RECOGNITION			
Victorian Institute of Teaching (VIT)			

Bachelor of Sport Management (Honours)

This course aims to develop your specialist knowledge and skills in a major field of sport management. Graduates are attractive to employers interested in motivated employees with demonstrated research skills, providing greater opportunity for promotion in the workplace.

LOCATION	DURATION	ATAR	APPLICATION
Ballarat	1 year	Not required	Direct
ENTRY REQUIREMENTS (NON-YEAR 12)			
See study.federation.edu.au			

Bachelor of Sport, Physical and Outdoor Education

If you're thinking about a career in community sport and recreation, or if you're looking for a pathway into Health and PE (HPE) teaching, this degree is for you. This course offers two options to becoming a registered Health and PE teacher. If after completing first year, you have maintained a good academic standard, you may be eligible to apply for a transfer into second year of the Bachelor of Secondary Education (Health and Physical Education Teaching). Alternatively, you may continue into a Master of Teaching in either secondary or primary teaching, and qualify as a Victorian Institute of Teaching registered teacher within 4.5 years.

LOCATION	DURATION	GUARANTEED ATAR	APPLICATION
Ballarat, Gippsland, Berwick	3 years	50	VTAC / Direct
ENTRY REQUIREMENTS			
Units 1 and 2: satisfactory completion in two units (any study combination) of Maths: General Mathematics, Maths: Mathematical Methods or Maths: Specialist Mathematics or Units 3 and 4: any Mathematics; Units 3 and 4: a study score of at least 20 in any English.			
ENTRY REQUIREMENTS (NON-YEAR 12)			
Higher Education, VET and/or Work/Life Experience. Literacy & Numeracy test required if VCE benchmarks not met.			
ESSENTIAL REQUIREMENTS			
Working with Children Check, Police Check. See study.federation.edu.au			
PROFESSIONAL RECOGNITION			
Australian Council for Health, Physical Education and Recreation (ACHPER)			
VIT APPROVED PATHWAY TO			
Initial Teacher Education programs			

GUARANTEED ATAR See definition on p 75



International Baccalaureate Career-related Program - International Sport Science

This course has been developed by World Academy of Sport (WAoS) and Federation University. The Career-related Studies is made up of three non-award units selected from the first-year Bachelor of International Sport Management degree. Successful completion of the course provides a direct pathway into the Bachelor of International Sport Management offered by Federation University and includes credits in the first year of the degree. Delivered online, Federation University provides teaching, and schools provide local support and guidance for students through the Career-related Program Coordinators.

LOCATION	DURATION	APPLICATION
Online	1.5 years	Direct
ENTRY REQUIREMENTS		
Based on International Baccalaureate World School or equivalent.		

Master of Clinical Exercise Physiology

Explore how health sciences integrates with the practical ability to develop and manage exercise programs for the prevention, treatment and ongoing management of injuries, chronic disease and complex conditions. Clinical knowledge, skills and experience is further applied to the completion of a research thesis or project.

LOCATION	DURATION	ATAR	APPLICATION
Ballarat	1.5 years	Not required	Direct
ENTRY REQUIREMENTS (NON-YEAR 12)		ESSENTIAL REQUIREMENTS	
Bachelor's degree. See study.federation.edu.au		Interview. See study.federation.edu.au	
PROFESSIONAL RECOGNITION			
Exercise and Sport Science Australia (ESSA)			



Higher Degrees by Research

Impactful research that transforms lives and enhances communities.

Federation University has a place-based approach to research, which focuses on the sustainable development of regional and rural communities and businesses.

Our philosophy is to apply new knowledge to deliver practical outcomes for our industry and community partners. We promote a culture of collaboration and co-design demonstrated by our #1 ranking in Victoria and #4 ranking in Australia for industry engagement through our higher degree by research programs.

ERA 2018 RESULTS*

RATING 5 - WELL ABOVE WORLD STANDARD	Applied Mathematics Environmental Sciences Environmental Science and Management Civil Engineering	Clinical Sciences Human Movement and Sports Science Nursing
RATING 4 - ABOVE WORLD STANDARD	Artificial Intelligence and Image Processing	Medical and Health Sciences

*Excellence in Research Australia, 2018 National Report

Our research centres are preferred research partners for industry, community and government in digital agriculture, environmental and resource management, renewable energy, chronic disease management and the evaluation of social policy.

Federation researchers are also setting international standards in data discovery and interoperability.

Research at Federation University is organised into three broad, crossdisciplinary research priority areas:

- **Health and Wellbeing:** Developing the best prevention, treatment and care for bodies and minds. Our research tests scalable and transferable models of cost-effective healthcare delivery in regional and rural settings.
- **Society and Environment:** Understanding and managing the world we live in, from the constructed to the natural. Our research supports sustainable regional economic and social development that enhances and protects Australia's unique landscapes and ecosystems.
- **Virtual, Digital and Computational Environments:** Exploring, analysing and creating our new reality through innovative technologies. Our research supports businesses and communities through secure integrated data systems, optimised process modelling and realising the power of artificial intelligence.

[federation.edu.au/research](https://www.federation.edu.au/research)

Higher degree by research programs

Higher degrees by research (HDR) are supervised research training programs.

The HDR programs offered at Federation University are:

- Graduate Certificate in Research – six months full-time
- Masters degree by research – 18 months full-time
- Doctoral degree (also known as a PhD) – three years full-time



HDR study areas

We offer supervisions at the Masters and PhD level across a large range of study areas, including:

- Allied Health
- Business
- Cyber Security
- Education
- Engineering
- Environmental Science
- Human Movement
- Humanities and Social Sciences
- Information Technology
- Mathematics
- Nursing
- Occupational Health and Safety
- Psychology
- Science
- Social Science
- Visual and Performing Arts

Graduate Certificate in Research

DURATION	APPLICATION
0.5 years/equivalent	Direct
<p>A pathway for those who have done masters by coursework or have significant industry experience to enter a higher degree by research at Federation University. Offered online or from any of our campuses, the course provides the flexibility to individually tailor a program across our research areas to suit the individual's needs and aspirations. Conditional entry to a PhD is offered upon application.</p>	

PhD (Doctor of Philosophy)

DURATION	APPLICATION
3 years	Direct
<p>ENTRY REQUIREMENTS There are a number of ways to meet the eligibility requirements for entry into a PhD program at Federation University:</p> <ul style="list-style-type: none"> • successful completion of an undergraduate degree and subsequent additional honours degree that is graded at first class or second class (upper division) and which includes a thesis or dissertation demonstrating the ability to undertake research at a PhD level • successful completion of a Masters by research degree that included a dissertation, demonstrating the ability to undertake research at PhD level • current Federation University Australia Masters by Research student with sufficient research capability to demonstrate PhD capacity, assessed via a formal Confirmation of Candidature process • honours equivalence, for applicants who have completed a Masters by coursework or have appropriate professional experience • successful completion of the Graduate Certificate in Research 	

Masters by Research

DURATION	APPLICATION
1.5 years	Direct
<p>ENTRY REQUIREMENTS Entry to a Masters by research program generally requires one of the following:</p> <ul style="list-style-type: none"> • successful completion of an undergraduate degree and subsequent additional honours degree that is graded as at least second class and which includes a dissertation demonstrating the ability to undertake research at a Masters level • honours equivalence, such as a combination of professional, qualifications and research experience, including Masters by coursework • successful completion of the Graduate Certificate in Research 	

Applications:

[federation.edu.au/applyforresearch](https://www.federation.edu.au/applyforresearch)

What will it cost me?

Everything you need to know

University fees. For most of us, they're simply part of the deal. But how much will they set you back? And what kind of payment options are available? We're here to help with any questions you have, or financial advice you need. Because when you're on top of your finances, it's much easier to focus on your studies and make the most of your time here with us.

Higher education fees

You are a domestic student if you're an Australian or New Zealand citizen, or an Australian permanent resident. The fees you will be charged depend on whether you receive a Commonwealth supported place or a full fee paying place, the course you choose to study and the year you commence.

Undergraduate fees

All of our undergraduate courses, including bachelor, associate degree and honours offer **Commonwealth supported places (CSP)**. You make a contribution towards the cost of the course and the Australian Government contributes the rest. The fees you pay are called the **student contribution amount** and you may be eligible to defer payment of your fees through HECS-HELP.

Postgraduate fees

Postgraduate Coursework Degrees

Many of our postgraduate courses, including graduate certificate, graduate diploma and master by coursework offer Commonwealth supported places however, some postgraduate courses only offer **full fee-paying places**. Federation University does not receive any government funding for fee-paying places and you contribute the full cost of your course. You may be eligible to defer payment of your fees through FEE-HELP.

For more info, head to [federation.edu.au/studentfees](https://www.federation.edu.au/studentfees) or [studyassist.gov.au](https://www.studyassist.gov.au). You can also call us on **1800 333 864** and chat to our Student Finance team.

Higher Degrees by Research

Research Training Program (RTP) fee-offset places are available to domestic students applying for Higher Degrees by Research (Australian and New Zealand citizens, and permanent residents). This means your tuition fees are covered by the Australian Government.

For more information, head to [federation.edu.au/research](https://www.federation.edu.au/research)

Additional costs

There may be other costs on top of your tuition fees, such as textbooks and materials. These vary between TAFE, undergraduate and postgraduate courses. For example, TAFE courses tend to have more material costs as they're more practical.

Moving away from home? Then it's important to think about living expenses too, such as rent, electricity, gas, water, food and phone bills – just so you can make a budget and stick to it.

Financial Information

At our Ballarat, Berwick and Gippsland campuses, our Student Financial Support Officers can help you out with everything from personal budgeting and referrals to financial aid organisations, to emergency aid, student grants and student loans.

For more information head to:

[federation.edu.au/financialsupport](https://www.federation.edu.au/financialsupport)

Student Services and Amenities Fee (SSAF)

This fee provides funding for services and amenities such as sporting and recreational activities, employment and career advice, child care, financial advice and food services.

We calculate this fee based on your enrolment within the calendar year, and charge it progressively for each semester. If you're having trouble paying this fee – and you're eligible – the SA-HELP loan scheme can help with paying all or part of it.

Find out more information about the SSAF at

[federation.edu.au/fees/ssaf](https://www.federation.edu.au/fees/ssaf) or [studyassist.gov.au](https://www.studyassist.gov.au)

VET (TAFE) fees

For information on VET (TAFE) fees, your first port of call is online at [federation.edu.au/studentfees](https://www.federation.edu.au/studentfees)



Higher education applications explained

What applicant type are you?

This will determine how you need to apply, and what you should include with your application.

Are you a current Year 12 or recent secondary student?

You are currently completing an Australian Year 12, within Australia or overseas, or completed Year 12 in 2022 or 2021, with no further study. Your application will be assessed based on your Year 12 results, including your adjusted ATAR which factors in considerations based on Special Entry Access Scheme (SEAS) or subject adjustments, and any 'essential requirements' detailed in study.federation.edu.au. We can usually access your Year 12 results; you do not need to provide us with a copy.

Are you a non-year 12 applicant?

You previously studied all or part of a Higher Education (University level) course, have completed VET (TAFE) studies at Certificate III level or higher, or have 'work and life experience'.

We will consider all your previous studies and experience when reviewing your application, along with any 'essential requirements' detailed in study.federation.edu.au.

Your application must include evidence of any previous studies, your CV detailing work and relevant volunteer experience, and completed 'essential requirements' where applicable.

Are you an international applicant?

You are an international applicant if you are not the holder of Australian or New Zealand Citizenship, Australian Permanent Residency (PR) or a Permanent Humanitarian Visa.

International applicants studying VCE in the year of application should refer to the advice provided for current Year 12 students.

All other international applicants should refer to federation.edu.au/international

What are 'essential requirements'?

In addition to your application, some courses have essential requirements, such as auditions, entrance tests or interviews. You must complete this to be considered for an offer.

Refer to the individual course entries to check if any apply to the course you intend applying for.

What is an 'adjusted ATAR'?

This is where additional points are added to your ATAR aggregate, increasing your rank accordingly. These adjustments include subject adjustments, where points are added based on achieving minimum scores in identified subjects, and may also cover access and equity factors which are applied for via SEAS (Special Entry Access Scheme) applications lodged through VTAC.

What are 'guaranteed ATARs'?

As the minimum ATAR varies each year, driven by the popularity of a course, the performance of applicants, and the number of offers made, we provide a 'guaranteed ATAR' for most courses, so you can plan with confidence. If your ATAR is equal to or above the published guaranteed ATAR, and you meet all other entry requirements, we will guarantee you an offer for that course. It is important to note that it is not a minimum ATAR, or an ATAR 'cutoff' – if your ATAR is below this, you may still receive an offer. View our guaranteed ATARs via federation.edu.au/atar

Early Offer Program (EOP)

Become part of the proud regional community that is Federation University by signing up for the Federation University Early Offer Program (EOP).

A range of courses are available for applicants who are wanting to transform themselves and their communities.

If you are studying Year 12 in 2023 and can meet the required ATAR and subject pre-requisites, or have completed VCE previously and not undertaken any further study, you can apply for the EOP.

You must still apply for the Federation University course you are interested in via VTAC, but you will have the confidence in knowing that if you meet the conditions of your early offer, you will have a place in that course at Federation University in 2024. For the latest information see: federation.edu.au/earlyoffer

Consideration on equity grounds

We believe all students should have equal opportunity.

Year 12 applicants should look at the Special Entry Access Scheme (SEAS) at vtac.edu.au/seas to see what special circumstances may apply to them (i.e. disability or financial disadvantage).

Check the potential impact a SEAS application could have on your ATAR with our online SEAS calculator, and get an estimate of your adjusted ATAR: federation.edu.au/seas-calculator

How do I apply?

Some applicants must apply via VTAC, some must apply directly to Federation, and some may choose between the two:

- Those applying to study with more than one institution:
VTAC
- Current Year 12 applicants applying for courses listed in VTAC:
VTAC
- Recent secondary applicants applying to study only with Federation:
VTAC or Fed Direct
- Non-year 12 applicants applying to study only with Federation:
VTAC or Fed Direct
- Those studying VCE Vocational Major or the International Baccalaureate (IB) in Victoria:
VTAC
- Applicants for courses not listed in VTAC:
Fed Direct
- Applicants for mid-year entry:
Fed Direct
- Applicants for Higher Degrees by Research:
Fed Direct
- Applicants for Federation Online courses (FOL):
Federation Online

Deferring
(put your studies on hold)

Do you want to study a degree program, but need some time away first? Most of the time you'll be able to defer your offer in an undergraduate course for up to one year, but for some courses this isn't possible. Check [federation.edu.au/defer](https://www.federation.edu.au/defer)

Have questions, queries or concerns?

We are here to support you through the application process. We can help you navigate entry requirements, determine the right starting point for you, discuss pathway options, and can point you to study support programs that you can access prior to and throughout your studies.

Call us on **1800 333 864** or chat via [study.federation.edu.au](https://www.study.federation.edu.au)

TAFE Applications

See [study.federation.edu.au/how-to-apply/TAFE](https://www.study.federation.edu.au/how-to-apply/TAFE)

VET Information Guide
(TAFE Handbook)

See [federation.edu.au/current-students/essential-info/publications/handbook](https://www.federation.edu.au/current-students/essential-info/publications/handbook)



My next steps

Ready to go? Just follow these steps and you're on your way

Step 1

Check the entry requirements, which may include specific VCE units or a previous qualification.

- Year 12 students need to meet VTAC Entry Requirements that may include achieving specified scores in pre-requisite subjects and ATAR.
- Non Year 12 students may need to have completed pathway programs or other studies, or have a significant level of relevant experience to gain admission.

study.federation.edu.au

Step 2

Check for any essential requirements that you need to complete in addition to your application. Essential requirements may include auditions, tests or interviews.

study.federation.edu.au

Step 3

Complete your application to study with Federation; all applications are submitted online.

Applying through VTAC

vtac.edu.au | 1300 364 133

All VTAC applications are submitted online.

Apply Directly

federation.edu.au/apply | 1800 333 864

If you want some help getting started, or you need to know what level of study you should start at, we can help.

Call 1800 333 864 or submit your enquiry via the Federation Request and Enquiry Dashboard fred.federation.edu.au

Applying through Federation Online

online.federation.edu.au

There's more than one way

Choose your path here

We welcome students from all backgrounds, life stages and education levels. And we firmly believe there's more than one way to get the qualification you need to jumpstart your career.

We offer foundation, TAFE, undergraduate, postgraduate and research courses.

A different way in

Some of our students may not immediately meet entry requirements – that's why we've designed new pathways for students from every walk of life.

VCE Vocational Major at Federation College

If you haven't completed VCE and you're aged above 15, then you can complete the VCE Vocational Major – a hands-on learning qualification. It's designed to re-engage students who would like a different secondary schooling pathway.

P-Tech

P-TECH provides students with the skills and support required to successfully navigate the transition from school to work or university. Students will leave Federation College as skilled candidates for jobs or further education.

Industry learning experiences and workplace visits help students to identify career interests and further study options. P-TECH prepares students for higher education and the workplace earlier than is typical. P-TECH students are well equipped for a range of careers or university degrees.

federation.edu.au/ptech

TAFE

TAFE is an amazing career pathway – but did you know you can also use it as a stepping stone towards higher education studies? Many of our study-only TAFE options provide a great pathway into relevant bachelor degrees.

federation.edu.au/tafe

FAST

Guarantee yourself a place with Federation through our FAST course (Federation Access Studies), and start the journey towards your dream degree. FAST helps you brush up on your study skills – whether you've just finished Year 12 and don't have the entry requirements you need, or you're a mature student looking to re-enter studies.

When you've successfully completed the course, you're guaranteed a place in a Federation degree perfect to your skillset (some credit may apply). See page 21 of this guide for further information.

If you require support with your English language skills, FAST (English for Academic Purposes) may be the pathway for you.



Scan for more information

Federation.edu.au

1800 333 864 (1800 FED UNI)

#feduni       /feduniaustralia



Disclaimer: Information contained in this brochure is correct as at October 2023.

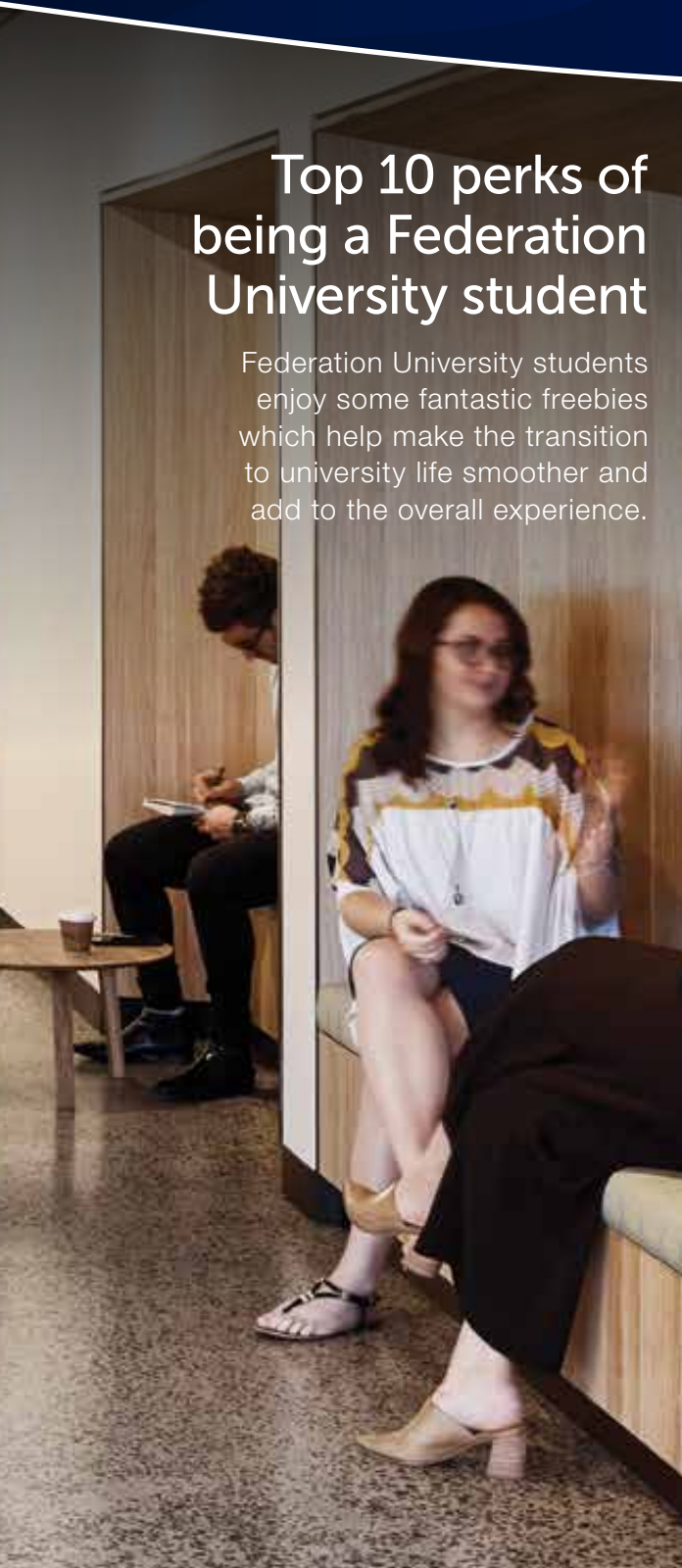
Federation University Australia reserves the right to alter any course, procedure or fee, as deemed necessary. Prospective students should confirm course information by visiting federation.edu.au and vtac.edu.au or by contacting the University directly. The information contained in this brochure is specifically for domestic students – international students should contact International education on +61 3 5327 9018.

Produced by Federation University Australia, Marketing.
Federation University Australia programs are delivered with Victorian and Commonwealth Government funding to eligible applicants. dt_117 09.10.23
CRICOS Provider No. 00103D | RTO Code 4909
TEQSA No. PRV12151 (Australian University)

Top 10 perks of being a Federation University student

Federation University students enjoy some fantastic freebies which help make the transition to university life smoother and add to the overall experience.

- 1. Access to thousands of films for free** – Don't want to pay a monthly subscription to Netflix? That's ok, as all Fed students receive free access to Kanopy which screens the latest movies, inspiring documentaries and award-winning foreign films which can be enjoyed from your TV, mobile phone and tablet.
- 2. Employment opportunities** – We help our students develop their resumes and keep them informed of casual, part-time and graduate employment opportunities as part of our Edge program. As not only are our programs designed to make sure our graduates are job-ready, we also want to help with employment while studying.
- 3. Free parking** – Did you know that Fed students enjoy free parking at our Mt Helen and Gippsland campuses and heavily discounted parking at Berwick? This means more money in your pocket each year. Our Berwick Campus is also only a short stroll away from the train station, offering easy access to public transport.
- 4. Discounted memberships** – Join our world-class Health and Sports Precinct at our Mt Helen Campus which includes an excellent community gym and indoor swimming pool which means you can swim all-year-round. The Latrobe Leisure Centre, featuring swimming pool, gym, sauna, basketball court and squash facilities, is also right on the doorstep of our Gippsland Campus. Wherever you're studying we have ways for you to stay physically active, compete in your favourite sports and can even assist you to perform at high levels through our sport and fitness programs.
- 5. Student Groups** – Whatever your interest, you can find a club or society to join (or start your own!) to help give you the full university experience. Immerse yourself in the student life and have some fun while you study.
- 6. Art galleries** – Visit the Switchback Gallery at our Gippsland Campus or Post Office Box Gallery at our Camp Street Campus and view the outstanding works from renowned artists, as well as our third-year students.
- 7. Fancy a hit of golf?** – The Gippsland Campus is located directly next to a nine-hole golf course!
- 8. Free Wi-Fi** – Access to free Wi-Fi while on campus including Office 365 and a range of apps.
- 9. Feel safe** – Our security officers are on campus ensuring you feel safe day and night.
- 10. Support** – There is plenty of support available for all students with our Learning and Academic Skills Success programs, counselling and disability support services, Aboriginal Education Centre and careers and employability program. That's why we're so highly rated for student support, particularly for First-Generation university and TAFE students.



OPEN DAY

ON CAMPUS:
13 August 2023

VIRTUAL:
27 August 2023



Scan here to register
or find out more

Feed