



CARDIFF
UNIVERSITY



PRIFYSGOL
CAERDYDD



A Guide
to Living in

UNIVERSITY ACCOMMODATION

www.cardiff.ac.uk/residences

CONTENTS

Introduction	8	Senghennydd Court	19
Residence Life Team	10	Senghennydd Hall	20
Aberconway Hall	11	Student Houses	21
Aberdare Hall	12	Talybont	22
Cartwright Court	13	Talybont Court	23
Clodien House	14	Talybont Gate	23
Colum Hall	15	Talybont North	24
Gordon Hall	16	Talybont South	24
Hodge Hall	17	University Hall	25
Roy Jenkins Hall	18	Campus maps	26



STUDENT BLOGGERS

From study tips to where to eat, to societies, weekend trips and where to get your books, our student bloggers are real students talking about the reality of being a student at Cardiff. Don't miss their latest blogs for the chance to find out more about what it's like to study and live in Cardiff.

www.cardiff.ac.uk/studentbloggers



OPEN DAYS

Chat to our staff and students, ask questions, get advice and information, and generally get a feel of what life as a student at Cardiff University is like.

To book your place, visit:
www.cardiff.ac.uk/openday

Or contact the Open Day Office directly:
Tel: **029 2087 4455**
Email: openday@cardiff.ac.uk



Find out more . . .

For further information, please visit our website: www.cardiff.ac.uk/residences

You can also watch our residences film online at: www.youtube.com/watch?v=hxzX-dYLfB8

Discover more about the University and the city of Cardiff through our interactive online tour at: virtualtour.cardiff.ac.uk

Reasons to Love Cardiff



The capital is our campus

Cardiff University is at the heart of a thriving and growing capital city.

“The official capital of Wales only since 1955, the buoyant city of Cardiff (Caerdydd) has, since the turn of the millennium, witnessed a remarkable evolution from a large town to a truly international city, with massive developments in the centre as well as on the rejuvenated waterfront. With a reputation as a party town, allied to lots of top-class sport and a cultural attractions, it is one of the UK’s most enticing destinations.”

Source: Rough Guide 2020



02

World-leading research

Cardiff is in the top tier of Britain’s research universities and is a member of the prestigious Russell Group. It’s ranked second nationally for research impact, and in the top five universities for research excellence in the UK.

We’ve been awarded seven Queen’s Anniversary Prizes (which recognise world-class excellence in UK Higher Education) and are home to a huge cohort of distinguished staff, including two Nobel Prize winners and 13 Royal Society Fellows.

03

Our star alumni

From politicians and journalists to scientists and innovators – many well-known faces have been through Cardiff’s corridors. Our alumni include BBC broadcasters Huw Edwards, Jason Mohammad and Susanna Reid, former National Poet of Wales Gillian Clarke, Money Saving Expert founder and journalist Martin Lewis OBE, academic, writer and broadcaster Professor Alice Roberts and many more. Our Honorary Fellows include the likes of Sir Patrick Stewart, Stephen Fry and Carol Vorderman.



04

Top teaching and employability

Stepping into a university that provides innovative, exciting teaching across the disciplines, it’s hard not to feel the buzz. A Cardiff education is unique and personable; students are taught and mentored by committed and enthusiastic tutors and lecturers, many of whom are world-leading experts. Our graduates are amongst the most sought after by employers.



Bute Park A 130 acre back garden

Bute Park lies in the heart of Cardiff behind King Edward VII Avenue. With the River Taff flowing alongside, it is the perfect mixture of tranquillity and wide open space, ideal for relaxing (or running) on a summer’s afternoon.



06

One big film set!

The proximity and unique architecture of the University campuses make it a prime filming location.

Cardiff is home to many TV shows, including dramas such as ‘Casualty’ and ‘Doctor Who’.



Reasons to Love Cardiff

Our students fall in love with Cardiff. So, what makes the Welsh capital so appealing? Discover more at: www.cardiff.ac.uk/reasons

07 On the doorstep to wild Wales

A wealth of treasures lie just beyond Cardiff's borders, a unique part of the world asking to be explored. A trip to Barry Island is a must, a destination for 'Gavin and Stacey' fans and beachgoers alike. The rugged Brecon Beacons offer incredible walks, views and outdoor pursuits.



08 International days

Rugby is part of the lifeblood of Cardiff; you can't miss it.

A festival atmosphere descends during the annual Six Nations tournament, as Wales' visiting rivals take them on in their home town. The city also hosts international football and cricket matches.

09 Community Action

Student volunteering is a way of life with many student-led projects serving the community. Further afield, the Phoenix Project is making a difference in Africa, working with the University of Namibia to embed quality education in focused projects, enabling better health and less poverty.

10 One of the best Students' Unions in the UK

It's official – according to What Uni Student Choice Awards 2020, Cardiff is ranked third best the UK. Home to over 240 sports clubs and student societies, a free employment service and, of course, the beloved Taf pub, the Students' Union caters for every student's needs across the board, from studying to socialising.

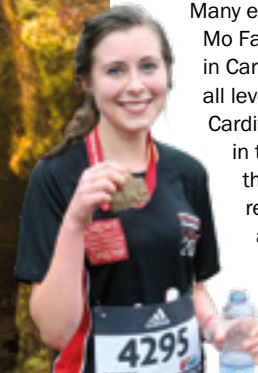
11 Rich culture and history

From the internationally renowned Wales Millennium Centre on the waterfront, to the National Museum in Cathays Park and the 2,000-year-old Cardiff Castle, Cardiff is a city steeped in heritage and culture.



12 A city that loves running

Many elite athletes, including the likes of Mo Farah, compete in world-class events in Cardiff. The city boasts plenty of events for runners of all levels – from weekly Parkruns to the Cardiff University/ Cardiff Half Marathon, the second largest race of its type in the UK. Many of our students join **#TeamCardiff** for this, where they also raise vital funds that support our research. Other students give their time to volunteer and our physio students are on hand to give much welcomed sports massage at the end of the 13.1 mile course!



INTRODUCTION

A guarantee of accommodation

Undergraduate

A single occupancy place in University accommodation with other first year undergraduates is guaranteed to all firm and insurance students provided they meet certain deadlines.*

Postgraduate

Overseas applicants are guaranteed a single occupancy place in University accommodation, provided they meet certain deadlines*. This includes making a non-refundable pre-payment.*

*For session 2021/22, full details of our accommodation guarantee and associated deadlines can be found on our website at www.cardiff.ac.uk/residences

Choice

There is a variety of accommodation, many with ensuite bathroom facilities within each single occupancy study bedroom, and most are situated within a short walk or cycle ride of the academic buildings, the University Students' Union and Cardiff's magnificent civic centre.

If you are made an offer to study at Cardiff University, you will be sent details of how to apply for University accommodation online. As far as possible, the University aims to give you a choice of accommodation, however, obtaining your higher preferences cannot be guaranteed.

Disability/medical information

Some accommodation has been specifically adapted for students with a disability/medical condition. We are also willing to make reasonable adjustments for disabled students.

Families and couples

A very limited number of University flats and studios are available for students in their first year of study.



Welsh speakers

Some of the flats at Senghennydd Court and Talybont North are reserved for Welsh speakers and learners of Welsh who wish to be grouped together.

LGBT+

Some flats at Talybont North and Talybont South have been reserved for LGBT+ students who would prefer to live with other LGBT+ students.

Quiet living

You can request a room in a shared flat/house with other students who have also expressed an interest in a quiet living environment.

No alcohol

You can request a room in a shared flat/house with other students who have requested to live in a no alcohol environment.

Places to eat

Reasonably priced meals and snacks are available at cafes and restaurants across the campus and in the Students' Union.

Sport

The University offers a combination of facilities and a diverse range of sports clubs giving students the opportunity to pursue formal and informal sporting interest at three sites across the University campus.

Accommodation fees

Type of residence (for 2021/22)	Average weekly fee
Part catered: ensuite	£148 - £157
Part catered: shared bathroom	£129 - £139
Self catered: ensuite	£114 - £134
Self catered: shared bathroom	£114 - £123

Accommodation fees and associated charges are payable by Direct Debit in three instalments (usually in October, January and April). All fees refer to single occupancy accommodation.

Cardiff came 2nd for monthly rental costs in the UK university cities.

Source: NatWest Student Living Index 2020



Residence Life Team



The Residence Life Team are dedicated to enhancing your student experience in University accommodation.

About the team

The Residence Life Team are students and staff who want to ensure that you have the best possible time whilst staying in our halls. The RLT is committed to providing a warm welcome and helping you to make a smooth transition into university. The RLT will be there to greet you upon arrival to Cardiff University, helping you to make your way to your room.

Once there, you'll find welcome gifts in your flats and kitchens from the Team. Look out especially for local vouchers and freebies, as well as the Freshers' calendar of events to help you settle in, have fun, and make friends. Oh, and don't miss all the free food!

The RLT care about you and want to work with you to build a strong sense of community in your halls. Through a wide range of social events and cultural activities, as well as practical support, they are here for you. The team also provide peer support, and signposting to Student Support and Wellbeing should you ever need it. Come join them and find your place at Cardiff University.

The team are committed to:

- Providing a warm welcome and encouraging a smooth transition into University
- Building a community-focused culture that gives you a sense of belonging
- Bringing students together through events that enhance learning, provide practical support for your student life, as well as social and cultural
- Organising activities including events for celebrations like Halloween, Christmas and Chinese New Year
- Providing peer to peer support, and signposting to Student Support and Wellbeing when needed
- Listening to the student voice in order to provide what students would like from their University accommodation experience.

Aberconway Hall

Aberconway Hall is situated next to Cardiff Business School and is only a short walk from the John Percival building (for humanities subjects), Cardiff Law School and the main campus. The hall is made up of flats for 3-6 students.

Map reference		58
Undergraduate		✓
Postgraduate		✗
Couples		✗
Families		✗
Main Building	0.5 miles	
Heath Park campus	1.25 miles	



Facilities

- 72 single occupancy study bedrooms with shared bathroom facilities (mostly shared between each pair of rooms)
- Self-catered, grouped into flats of 3-6 students with shared kitchen/dining areas
- Wheelchair accessible accommodation on the ground floor
- Quiet living option
- All rooms have computer network connection points and Wi-Fi access
- Laundry.

Nearest:

- Shop:** Maindy Road
- Fast food:** City centre
- Bar:** Students' Union
- Sports facilities:** Cardiff University Fitness & Conditioning Centre
- Bike shed:** Colum Hall.



“Aberconway Hall is situated very close to necessary amenities. It only takes five minutes to reach shops or bars and transport facilities are nearby as well. The living environment is good and it's easy to socialise and find people who share common interests.”

Ayasta Pokharel

Aberdare Hall

Aberdare Hall is a traditional women's hall adjacent to the main campus and offers both part catered and self-catered accommodation. Built in 1893, the hall retains many interesting period features and a semblance of Victorian charm.



Facilities

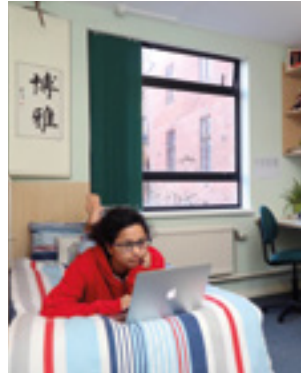
- 132 single occupancy study bedrooms with shared bathroom facilities
- Self-catered and part catered
- Shared kitchen/dining areas
- All rooms have computer network connection points and Wi-Fi access
- Two bedrooms equipped for those with a hearing impairment
- Music library
- Garden
- TV lounge/common room
- Laundry
- Common room student society
- Bike shed.

Nearest:

Shop: Maindy Road
Fast food: City centre
Bar: Students' Union
Sports facilities: Cardiff University Fitness & Conditioning Centre.



Map reference		60
Undergraduate		✓
Postgraduate		✓
Couples		✗
Families		✗
Main Building	0.2 miles	
Heath Park campus	1.5 miles	



“The best thing about Aberdare Hall is the community spirit amongst the residents. I have met several friends during the evening dinner sessions, and the events organised by the common room society. The close proximity of its location to Business School means I can walk for my seminars come rain or snow. Whenever I have any problem, I can go directly to the reception and the team promptly helps me out.”

Violina Sarma

Cartwright Court

Cartwright Court is a self-catered hall located in a residential area. The hall accommodates 172 students.



Map reference		57
Undergraduate		✓
Postgraduate		✗
Couples		✓
Families		✓
Main Building	1 mile	
Heath Park campus	1.5 miles	



Facilities

- 15 flats each with 6 single occupancy study bedrooms and shared bathroom facilities (shared between each pair of rooms)
- 16 houses each with between 4 and 6 single occupancy study bedrooms and shared bathroom facilities
- Shared kitchen/dining areas
- 4 flats for couples/families
- All rooms have computer network connection points and Wi-Fi access
- Laundry

- Bikedshed
- 34 parking spaces.

Nearest:

Shop: Crwys Road
Fast food: Crwys Road
Bar: Crwys Road
Sports facilities: Cardiff University Fitness & Conditioning Centre.



“For me, studying at Heath Park, Cartwright Court is the ideal location and there are other healthcare students so it's a great community. It's very social but also quiet, and the kitchen is great for socialising in. Beware, you can spend all night in there talking with housemates. Residence Life are great, my house loves the free food events the best.”

Holly Gibbs

Clodien House

Clodien House is located next to the University's Heath Park campus providing an ideal location for students studying nursing and healthcare courses.

Note: Cardiff University is working in partnership with this private Hall of Residence which is owned and managed by Unite.

Map reference	50
Undergraduate	✓
Postgraduate	✓
Couples	✗
Families	✗
Main Building	1.25 miles
Heath Park campus	0.25 miles



Facilities

- 184 single occupancy study bedrooms with ensuite bathroom facilities and ¾ bed (4ft)
- 7 studios (self-contained)
- Self-catered, grouped into flats of 4-6 students
- Shared kitchen/dining areas
- All rooms have computer network connection points and Wi-Fi access
- Laundry
- Bike racks.

Nearest:

Shop: Whitchurch Road
Fast food: Whitchurch Road
Bar: Whitchurch Road
Sports facilities: Heath Park campus.



“Clodien House was a great place to live as it was very close to the hospital where I had my lectures. The location was also ideal because it was close to local shops and also easy to get to the city centre. It was very sociable which made it very easy to make new friends who were doing similar courses to me.”

Steph Hemming

Colum Hall

Colum Hall is a self-catered hall situated opposite Cardiff Business School and a short walk from the main campus area. The hall is divided into 14 flats, each providing accommodation for 8 students.

Map reference	59
Undergraduate	✓
Postgraduate	✗
Couples	✗
Families	✗
Main Building	0.5 miles
Heath Park campus	1.25 miles

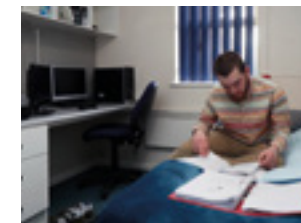


Facilities

- 112 single occupancy study bedrooms
- All rooms have ensuite toilet/shower facilities
- Shared kitchen/dining areas
- Self-catered, grouped into flats of 8 students
- All rooms have computer network connection points and Wi-Fi access
- 3 study bedrooms equipped for those with a hearing impairment
- Bike shed.

Nearest:

Shop: Maindy Road
Fast food: City centre
Bar: Students' Union
Sports facilities: Cardiff University Fitness & Conditioning Centre
Laundry: Aberconway Hall.



“Colum Hall was great as I liked being in the middle of the student area and it meant I was able to meet lots of new people. The facilities are good and I had everything I needed. It is in the perfect location, with nearby shops and pubs and the city is a 10 minute walk away. Colum Hall is an experience like no other!”

Vini Holden

Gordon Hall

Gordon Hall is a part-catered hall. It is a small hall located in a residential area and is particularly convenient for those studying mathematics, physics and astronomy, engineering or computer science.

Map reference 64	
Undergraduate	✓
Postgraduate	✗
Couples	✗
Families	✗
Main Building	0.5 miles
Heath Park campus	2 miles



Facilities

- 80 ensuite single occupancy study bedrooms
- 11 single occupancy study bedrooms with shared bathroom facilities
- Shared kitchen/dining areas
- Evening meals provided Monday to Friday during term time at the nearby Trevithick restaurant in the Queen's Buildings
- All rooms have computer network connection points and Wi-Fi access
- 1 study bedroom with accessible ensuite bathroom
- Laundry
- Bike shed.

Nearest:

Shop: Salisbury Road
Fast food: City centre
Bar: Students' Union
Sports facilities: Cardiff University Fitness & Conditioning Centre.



“At Gordon Hall you're only five minutes walk away from the city centre and 10 minutes away from the Students' Union so everything you need is literally on your doorstep! Everyone talked to everybody else and eating dinner together meant it was very easy to meet new people. I made some of my best friends at Gordon Hall!”

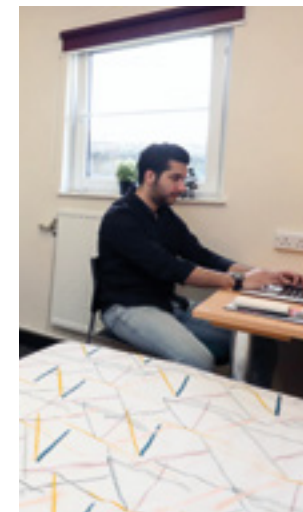
Emma Harris



Hodge Hall

Hodge Hall offers self-catered accommodation for postgraduate students only. It is a small hall accommodating only 60 students and is close to the main campus.

Map reference 61	
Undergraduate	✗
Postgraduate	✓
Couples	✗
Families	✗
Main Building	0.25 miles
Heath Park campus	1.25 miles

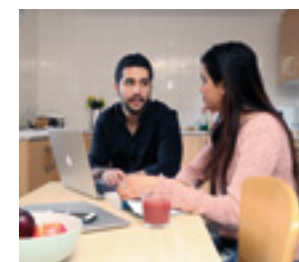


Facilities

- 12 flats each with 4-6 single occupancy study bedrooms
- Shared bathroom facilities (shared between each pair of rooms)
- Shared kitchen/dining areas
- Self-catered, grouped into flats of 4-6 students
- All rooms have computer network connection points and Wi-Fi access
- Laundry
- Bike shed
- 9 parking spaces.

Nearest:

Shop: Maindy Road
Fast food: City centre
Bar: Students' Union / Woodville Road
Sports facilities: Cardiff University Fitness & Conditioning Centre.



“I would definitely recommend Hodge Hall as it's a fantastic way to meet new people, and provides an easy way to introduce you into student life and living independently. It is really close to the University, allowing me to roll out of bed 10 minutes before my lectures!”

Matt Beckett



Roy Jenkins Hall

Roy Jenkins Hall is a small self-catered residence less than a mile from the main campus. It is close to a good local shopping area which includes two supermarkets.

Map reference 56	
Undergraduate	✓
Postgraduate	✓
Couples	✓
Families	✗
Main Building	0.75 miles
Heath Park campus	1 mile



Facilities

- 6 flats each with 5 single occupancy study bedrooms
- Shared kitchen/dining areas
- Shared bathroom facilities - undergraduate only
- 12 studios - couples and postgraduates only
- All rooms have computer network connection points and Wi-Fi access
- Bike shed
- 20 parking spaces.

Nearest:

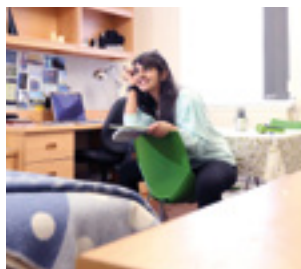
Shop: Crwys Road

Fast food: Crwys Road

Bar: Crwys Road

Sports facilities: Cardiff University Fitness & Conditioning Centre

Laundry: Cartwright Court.



"It's perfect for nipping to the shops or food as they are all on its road.



The rooms have so much storage and space, which is a bonus."

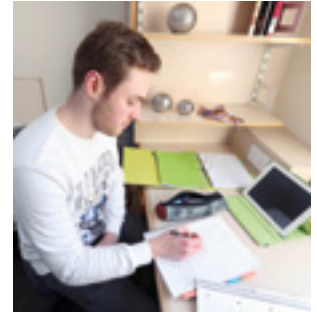
Molly Ellis



Senghennydd Court

Senghennydd Court is a large residence close to the main campus area, the Students' Union and the city centre. It is particularly convenient for students studying mathematics, engineering, physics and astronomy or computer science.

Map reference 63	
Undergraduate	✓
Postgraduate	✓
Couples	✗
Families	✗
Main Building	0.5 miles
Heath Park campus	1.75 miles



Facilities

- 490 single occupancy study bedrooms for undergraduate students grouped into flats of 5 students with shared bathroom facilities
- Some flats reserved for Welsh speakers and learners of Welsh who wish to be grouped together
- 120 single occupancy study bedrooms for postgraduate students with ensuite toilet/shower facilities grouped into flats of 5 students
- Shared kitchen/dining areas
- Quiet living option
- No alcohol option
- Self-catered or part-catered
- Two bedrooms equipped for those with a hearing impairment
- Postgraduate 'Plus' option
- Laundry
- Bike sheds

Nearest:

Shop: Salisbury Road

Fast food: Salisbury Road, city centre

Bar: Students' Union

Sports facilities: Cardiff University Fitness & Conditioning Centre



"I knew from the beginning that Senghennydd Court was my first choice as student accommodation. It is very convenient, close to town and to my lectures. Certainly, living in a Welsh apartment is a huge advantage, it's nice to live and socialise with friends. The Welsh students here get along really well and we often socialise together but we're not 'clique'! Everything we need as students is available for us here at Senghennydd. And there's plenty of room in the bedrooms to make you feel at home!"

Lindsey Connelly



Senghennydd Hall

Senghennydd Hall is a part-catered residence situated within a very short distance of the main campus and ideal for students studying mathematics, physics and astronomy, engineering or computer science.

Map reference 62	
Undergraduate	✓
Postgraduate	✗
Couples	✓
Families	✗
Main Building	0.5 miles
Heath Park campus	1.75 miles



Facilities

- 102 single occupancy study bedrooms with ensuite toilet/shower facilities
- 1 studio suitable for a couple
- Shared kitchen/dining areas
- Quiet living option
- All rooms have computer network connection points and Wi-Fi access
- Evening meals provided Monday to Friday during term time at the nearby Trevithick restaurant in the Queen's Buildings
- 3 study bedrooms equipped for those with a hearing impairment
- Bike shed.

Nearest:

- Shop:** Salisbury Road
- Fast food:** Salisbury Road, city centre
- Bar:** Students' Union
- Sports facilities:** Cardiff University Fitness & Conditioning Centre
- Laundry:** Senghennydd Court.



“I really like the location of Senghennydd Hall, it's incredibly close to the main Uni building and very close to the city centre. We socialise in our kitchen which is great. I walk to uni and to the city and it takes me no longer than 10 minutes to get to either one. I am very happy it is near the SU too! The residence team is very friendly and very helpful! So are the maintenance men!

Sneha Bannerjee

Student Houses

The University has a number of student houses located along Colum Road, Colum Place and in the Cathays and Roath areas. They are conveniently located close to the main campus.

Undergraduate	✓
Postgraduate	✓
Couples	✓
Families	✓
Main Building	up to 0.75 miles
Heath Park campus	up to 1.75 miles



Facilities

- Houses for 4 to 11 students
- 365 single occupancy study bedrooms with shared bathroom facilities
- Shared kitchen/dining areas
- 6 flats for couples/families
- All rooms have computer network connection points and Wi-Fi access.

Nearest:

- Shop:** Maindy Road / Salisbury Road
- Fast food:** City centre
- Bar:** Students' Union
- Sports facilities:** Cardiff University Fitness & Conditioning Centre
- Laundry:** Aberconway Hall / Hodge Hall.



“The facilities in our student house were great – large rooms, a well equipped kitchen and a comfortable house to live in! You are able to enjoy more independence and freedom and you are a short walk away from the city centre. It is a new experience that allows students to meet new people and enjoy a great place to live.”

Hallam Nash

TALYBONT

Talybont is the largest of the University's self-catered residences. Close to large areas of parkland and a short walk or cycle to most of the academic buildings including the Heath Park campus.



On-site facilities

- Social/study space
- Laundry
- Bike shed
- Amazon lockers.

Cardiff University sports training village:

- Fitness suite
- Sports halls which host the majority of indoor sports clubs
- A range of floodlit outdoor sports facilities.

Nearest:

Large supermarket, KFC and McDonalds restaurant next to Talybont Gate/Talybont North.

Small supermarket and Subway also on North Road.



TALYBONT COURT

Facilities

- 511 single occupancy study bedrooms with ensuite facilities
- Flats for 4-7 students
- Shared kitchen/dining/lounge areas
- Wheelchair accessible accommodation
- All rooms have computer network connection points and Wi-Fi access
- All rooms suitable for people with a hearing impairment
- Two houses for families.



Map reference

55

Undergraduate	✓
Postgraduate	✓
Couples	✗
Families	✓
Main Building	0.75 miles
Heath Park campus	1.5 miles

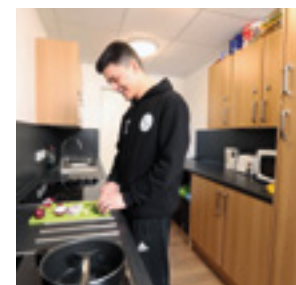
“I am so glad that I picked Talybont Court to be my home for the first year of university! Since the Talybont Complex is teeming with lots of students, it is super easy to make friends! The flat itself is also perfect for socialising thanks to its big kitchen/sitting area and the rooms are spacious, fitted with a study space, unlimited Wifi and an ensuite! It certainly has felt like home!”

Katie Pike

TALYBONT GATE

Facilities

- 179 single occupancy study bedrooms with ensuite facilities and ¾ bed (4ft)
- Flats for 6-10 students
- Shared kitchen/dining/lounge areas
- Wheelchair accessible accommodation
- All rooms have computer network connection points and Wi-Fi access
- Each flat has a Freeview TV with licence paid.



Map reference

52

Undergraduate	✓
Postgraduate	✗
Couples	✗
Families	✗
Main Building	1.5 miles
Heath Park campus	1.5 miles

“Living in Talybont Gate with other first years means that it is easy to interact with the other residents: they are a good group. The rooms are big and have larger (and therefore more comfortable) beds than the rest of the Talybont site. The location is good too. There are two supermarkets nearby so you can go and shop for food at any time. Although I study in the School of Journalism which is based quite a distance from the main campus, I still manage to walk to my lectures every day from Talybont Gate.” **Shreyas Rai**



TALYBONT NORTH

Facilities

- 972 single occupancy study bedrooms with ensuite facilities
- Flats for 6 students
- Shared kitchen/dining areas
- All rooms have computer network connection points and Wi-Fi access
- Postgraduate 'Extra' option
- Some flats reserved for Welsh speakers and learners of Welsh who wish to be grouped together
- Quiet living option
- No alcohol option
- LGBT+ option
- 130 parking spaces
- 4 study bedrooms equipped for those with a hearing impairment.

Map reference 53	
Undergraduate	✓
Postgraduate	✓
Couples	✗
Families	✗
Main Building	1.25 miles
Heath Park campus	1.5 miles



"I really like the way Talybont North is well-located with shops and sports facilities nearby. One of the benefits of living in a University residence is that if I have a problem, I can speak face to face with someone at reception, explain the problem and its quickly fixed."



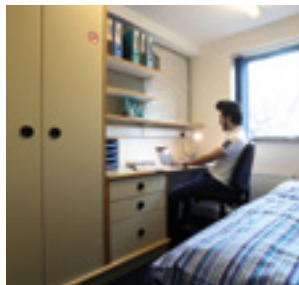
Rhys Davies



TALYBONT SOUTH

Facilities

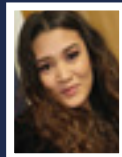
- 1252 single occupancy study bedrooms with ensuite facilities
- Flats for 4-8 students
- Shared kitchen/dining areas
- LGBT+ option
- All rooms have computer network connection points and Wi-Fi access
- 2 study bedrooms equipped for those with a hearing impairment.



Map reference 54	
Undergraduate	✓
Postgraduate	✓
Couples	✗
Families	✗
Main Building	1 mile
Heath Park campus	1.25 miles



"Talybont South is best for meeting new people and it is close to other campuses as well. Our flat has all the facilities we need. The kitchens are a great space to socialise before heading out. There are always groups walking to lectures and into the city. University Security are helpful when there is a problem out of hours."

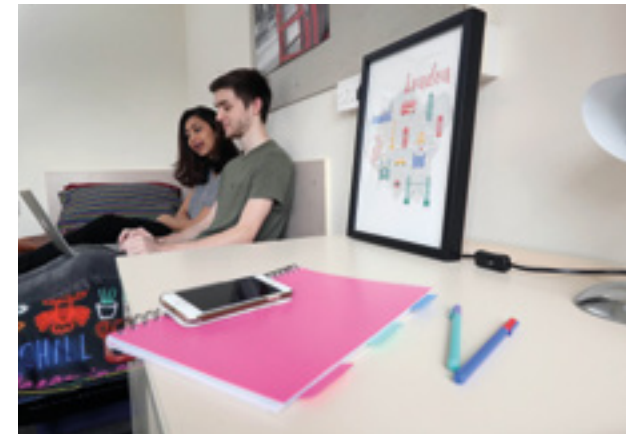


Monica Recabar

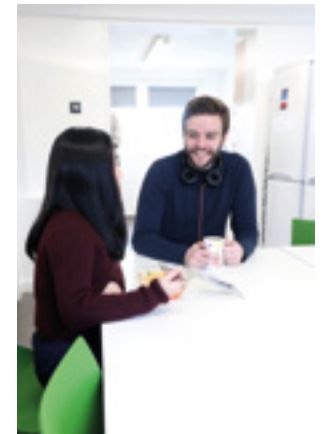


UNIVERSITY HALL

University Hall is a large self-catered hall located less than 2 miles from the main campus and just over 1 mile from the Heath Park campus. It stands in its own pleasant, extensive grounds overlooking the city. The hall accommodates 673 students and also has a small number of residences suitable for couples and families.



Map reference 51	
Undergraduate	✓
Postgraduate	✗
Couples	✓
Families	✓
Main Building	1.75 miles
Heath Park campus	1.25 miles



Facilities

- Variety of single occupancy study bedrooms with ensuite or shared bathroom facilities
- Shared kitchen/dining areas
- Quiet living option
- All rooms have computer network connection points and Wi-Fi access
- Laundry
- 65 parking spaces
- Study bus service to Main and Heath Park Campus area at no extra cost (for information on dates/times, please check our website)
- 3 study bedrooms equipped for those with a hearing impairment
- Social/study space
- Outdoor multi-use games area (MUGA).

Nearest:

Shop: Penylan

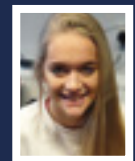
Bar: Wellfield Road

Fast food: Wellfield Road

Supermarket: Colchester Avenue.



"I love living at University Hall because there is a great community of people. I have made so many friends all from different blocks. It's a great location for scenic walks like Roath Park."



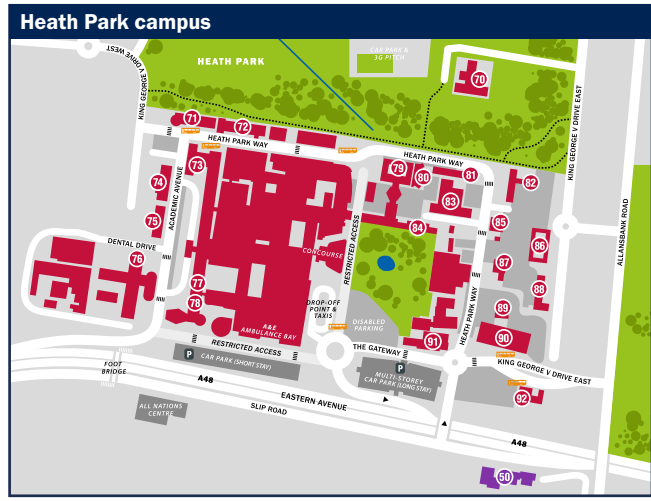
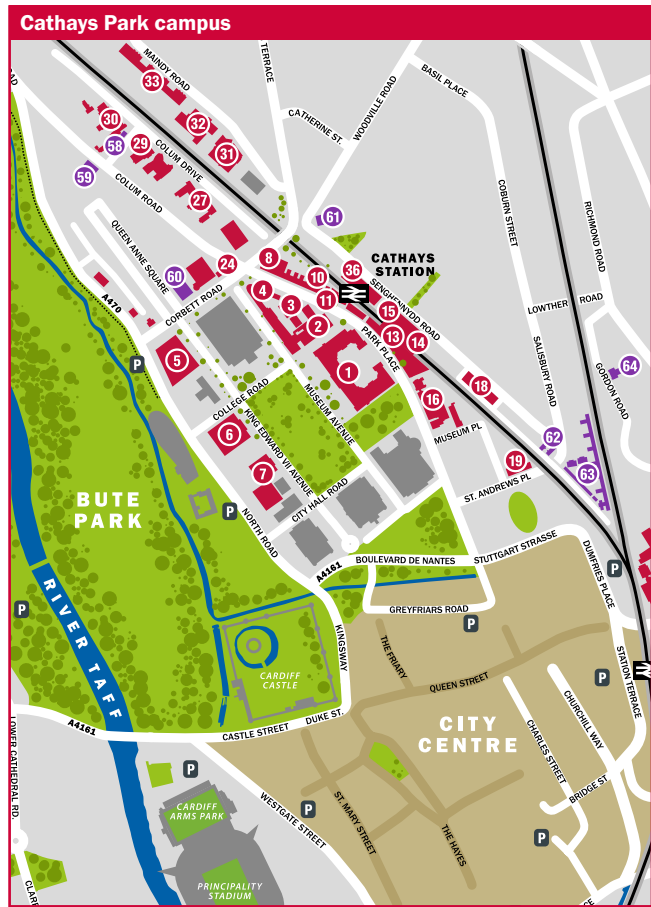
Sylvie Greenway





Residences

Aberconway Hall	58
Aberdare Hall	60
Cartwright Court	57
Clodien House	50
Colum Hall	59
Gordon Hall	64
Hodge Hall	61
Roy Jenkins Hall	56
Senghennydd Court	63
Senghennydd Hall	62
Talybont Court	55
Talybont Gate	52
Talybont North	53
Talybont South	54
University Hall	51



Cathays Park campus

Aberconway Building	30
Architecture	6
Biosciences	1, 2
Business School	30
Bute Building	6
Careers and Employability	11
Centre for Student Life	13
Chaplaincy	10
Chemistry	1
Computer Science and Informatics	21
Cardiff University Brain Research Imaging Centre (CUBRIC)	33
Day Care Centre	16
Deri House	19
Earth and Ocean Sciences	1, 2
Eastgate House	22
Engineering	21
English, Communication and Philosophy	27
Eye Clinic	31
Geography and Planning	7
Glamorgan Building	7
Global Opportunities Centre	11
Hadyn Ellis Building	32
Healthcare Sciences	22
History, Archaeology and Religion	27
John Percival Building	27
Journalism, Media and Culture	35
Julian Hodge Building	29
Law	4
Main Building	1
Maths	18
McKenzie House	23
Modern Languages	8
Music	24
New Maths and Computer Science Building	36
Optometry and Vision Sciences	31
Pharmacy and Pharmaceutical Sciences	5
Physics and Astronomy	21
Politics and International Relations	4
Psychology	3
Queen's Building	21
Redwood Building	5
Registry	23
Security Centre	2
Sir Martin Evans Building	2
Social Sciences	7
Southgate House	34
Sports	34, 15
Student Support Centre	11
Students' Union	14
Tower Building	3
Trethick Building	21
Welsh	27

Heath Park campus

Cardigan House	84
Cochrane Building	83
Dental School/Hospital	76
Healthcare Sciences	79
IV Lounge	81
Medicine	78
Neuadd Meirionnydd	81
Michael Griffith Education Centre	80
Nursing and Midwifery	79
Sports and Social Club	91
Tŷ Dewi Sant Building	79

CardiffConnected

www.cardiff.ac.uk

 @cardiffuni

 facebook.com/Cardiffuni

 instagram.com/cardiffuni

 youtube.com/user/cardiffuni

Contact us

Residences Office
Cardiff University
PO Box 533
Cardiff
CF14 3XZ

Tel: +44 (0)29 2087 4849

Email: residences@cardiff.ac.uk

Web: www.cardiff.ac.uk/residences

The University makes every effort to check the accuracy of the information in this guide at the time of going to press. However, inevitably changes do take place from time to time. You should not therefore rely solely on this guide and should visit the website **www.cardiff.ac.uk/residences** for latest information.

This guide is also available in Welsh

This brochure can also be made available in large print (text), Braille and on audio tape/CD. To request an alternative format please contact the Residences Office.

